



AUGUSTA UNIVERSITY  
**MEDICAL COLLEGE  
OF GEORGIA**

**PHASE 3**  
**ELECTIVES BULLETIN**



# Table of Contents

General Information.....	2
Signup Process Schematic.....	5
Selectives List	
Critical Care.....	6
Sub-I.....	9
Electives List	
Anesthesiology .....	13
Biochemistry and Molecular Biology.....	15
Cellular Biology and Anatomy.....	16
Dermatology .....	17
Emergency Medicine.....	18
Family Medicine .....	20
Internal Medicine.....	23
Miscellaneous Courses/MEDI.....	27
Neurology .....	28
Obstetrics and Gynecology .....	29
Ophthalmology .....	31
Pathology .....	32
Pediatrics .....	34
Pharmacology and Toxicology .....	38
Physiology .....	39
Psychiatry .....	40
Radiation Oncology .....	43
Radiology .....	44
Surgery	
General.....	46
Neurosurgery .....	48
Orthopedics .....	49
Otolaryngology .....	50
Pediatric Surgery .....	51
Plastic Surgery .....	51
Thoracic and Cardiac .....	51
Urology.....	52
Electives Open to All M3 & M4 Students .....	53
Electives Open to 3 <sup>rd</sup> Year Students w/Conditions.....	54
Electives Open to 4 <sup>th</sup> Year Students Only .....	55

## **General Information**

### **Requirements for Completion of Phase 3**

#### **A. General Requirements**

1. Students must satisfactorily complete all requirements for Phase 2 before entering Phase 3.
2. The minimum Phase 3 requirement for graduation from the Medical College of Georgia, is the satisfactory completion of the 3<sup>rd</sup> and 4<sup>th</sup> year clerkships, the 2 selectives, and 4 electives.

#### **B. Required Junior Clerkships**

1. Medicine 5000 – 8 weeks
2. Neuroscience 5000 – 4 weeks
3. Obstetrics & Gynecology 5000 – 6 weeks
4. Pediatrics 5000 – 6 weeks
5. Psychiatry 5000 – 4 weeks
6. Surgery 5000 – 8 weeks
7. Family Medicine 5000 – 6 weeks
8. Medicine 6000 - 2 weeks

#### **C. Required Senior Year Courses**

1. Clerkships: All students are required to complete the following two clerkships:  
GMED 5077 - Ambulatory Care Clerkship  
EMED 5001 – Emergency Medicine
2. Selectives: All students are required to complete a sub-internship selective and a critical care selective.

Selectives are only available to students who have completed their junior core rotation requirements.

The following is a list of courses which qualify for the respective selective requirements. Please note that courses not listed below *do not* count toward the requirements.

##### **a. Sub-Internship:**

1. FMPC 5003 – Family Medicine Sub-I
2. GMED 5011 – Medicine Sub-I
3. NEUR 5001 – Adult Neurology Sub-I
4. NEUR 5009 – Child Neurology Sub-I
5. OBGYN 5009 – OB/Gyn Sub-I
6. PEDS 5001 – Neonatal Sub-I
7. PEDS 5009 – Pediatrics Sub-I
8. SURG 5007 – Surgery Sub-I
9. SURG 5016 – Surgery Sub-I for Military Students

##### **b. Critical Care:**

1. ANES 5015 – Anesthesia Critical Care
2. GMED 5034 – Medical Critical Care
3. NEUR 5010 – Neurology Critical Care
4. PEDS 5001 – Neonatal Critical Care
5. PEDS 5018 – Pediatric Critical Care
6. SURG 5005 – Surgery Critical Care/Trauma

##### **c. PEDS 5001 can count as a Critical Care Selective or Sub-Internship but not both.**

##### **d. After fulfilling the selective requirement, students may take any course from the same selective list other than the one already taken, and count it as an elective**

#### **3. Electives:**

- Senior students must successfully complete a minimum of three electives. If a student did not complete a third year elective, then a fourth elective is required in the senior year to fulfill graduation requirements.
- At least one of the three electives done in the fourth year must be on campus (two for students required to take 4 4<sup>th</sup> year electives)
- Because electives provide students the opportunity to broaden their training, students are encouraged to complete more than the minimum of 3 electives.
- Course Classification System for Electives
  - Class 1: an unlimited number of these courses may be taken for credit
  - Class 2: only *one* Class 2 course may be taken for credit
  - Research: only *one* Research course may be taken for credit
  - International: only *one* International course may be taken for credit

## Registering for Rotations

### A. General Information:

1. In order to be officially enrolled into any selective or elective, students must submit the completed appropriate course form to the Curriculum Office. In addition 4<sup>th</sup> year students must submit a completed scheduling worksheet to the Curriculum Office by the start of the academic year.
2. Students must be enrolled in a course prior to starting in order to receive credit. **We cannot provide retroactive credit for courses if you are not properly enrolled.**
3. Malpractice: You must be officially enrolled in a course to be covered by malpractice
  - a. In Georgia, No student who engages in the practice of medicine under the supervision of a medical facility, academic institution, or doctor of medicine, as a part of an academic curriculum leading to the award of a medical degree, shall be liable for any civil damages as a result of any act or omission in such practice of medicine, except for willful or wanton misconduct.” (Georgia Code 1981, section number 51138, Effective date: July 1, 1987)
  - b. In the United States but NOT in Georgia students officially enrolled at MCG are covered by Professional Liability Insurance while at U.S. institutions out of the state of Georgia.

### B. Course Forms

1. The appropriate course form should be completed in order to enroll in selectives and electives. Copies of these forms can be found on the Curriculum Office home page.
2. There are 4 types of course forms:
  - a. **Add Form**: use for all MCG sponsored courses on all campuses
  - b. **Off Campus Elective Form**: use for all off campus electives inside the United States
  - c. **Drop Form**: use for all electives, selectives, and 4<sup>th</sup> year clerkships regardless of campus
3. After completion of the student portion of the form, students should submit via *email* the form to the appropriate location (explained on the form) for approval. Please note that completed forms must be submitted by email in order to maintain an accurate record of the submission.
4. Students are not officially enrolled until the completed form is then forwarded to the Curriculum Office.

## Dropping and Adding Electives

### A. Dropping Courses

1. All electives on the Augusta campus, except continuous electives, may be dropped any time prior to three weeks from the start date of the elective.
2. Clerkships and selectives on all campuses as well as electives outside Augusta (except continuous electives) may be dropped prior to six weeks from the start of the course.
3. Continuous Electives: Electives delivering instruction over a period longer than one month (examples: EMED 5008 and MEDI 5012) must still be registered for specific block on a student's schedule even though instruction may begin before or end after the dates of the block in which the course is registered. Because of this unique scheduling aspect, these courses must be dropped by September 1 of the academic year in which the course is scheduled.
4. Without special permission from the Curriculum Office courses may not be dropped after the deadline. After the deadline, students are required to withdraw from a course and will not be allowed to sign up for any course during that month. In addition, the withdrawal will be recorded on the student's transcript as a "W".

### B. Adding Courses

1. Courses may be added to the schedule at any time up to the beginning of the course as long as the student has an open month and has obtained approval from the appropriate department or institution.
2. Gaining approval from the department and/or institution may involve verifying that there is sufficient room in the course, receiving permission from the sponsoring faculty, and completing all necessary paperwork for the course in a timely fashion (including anything required by the hosting facility).

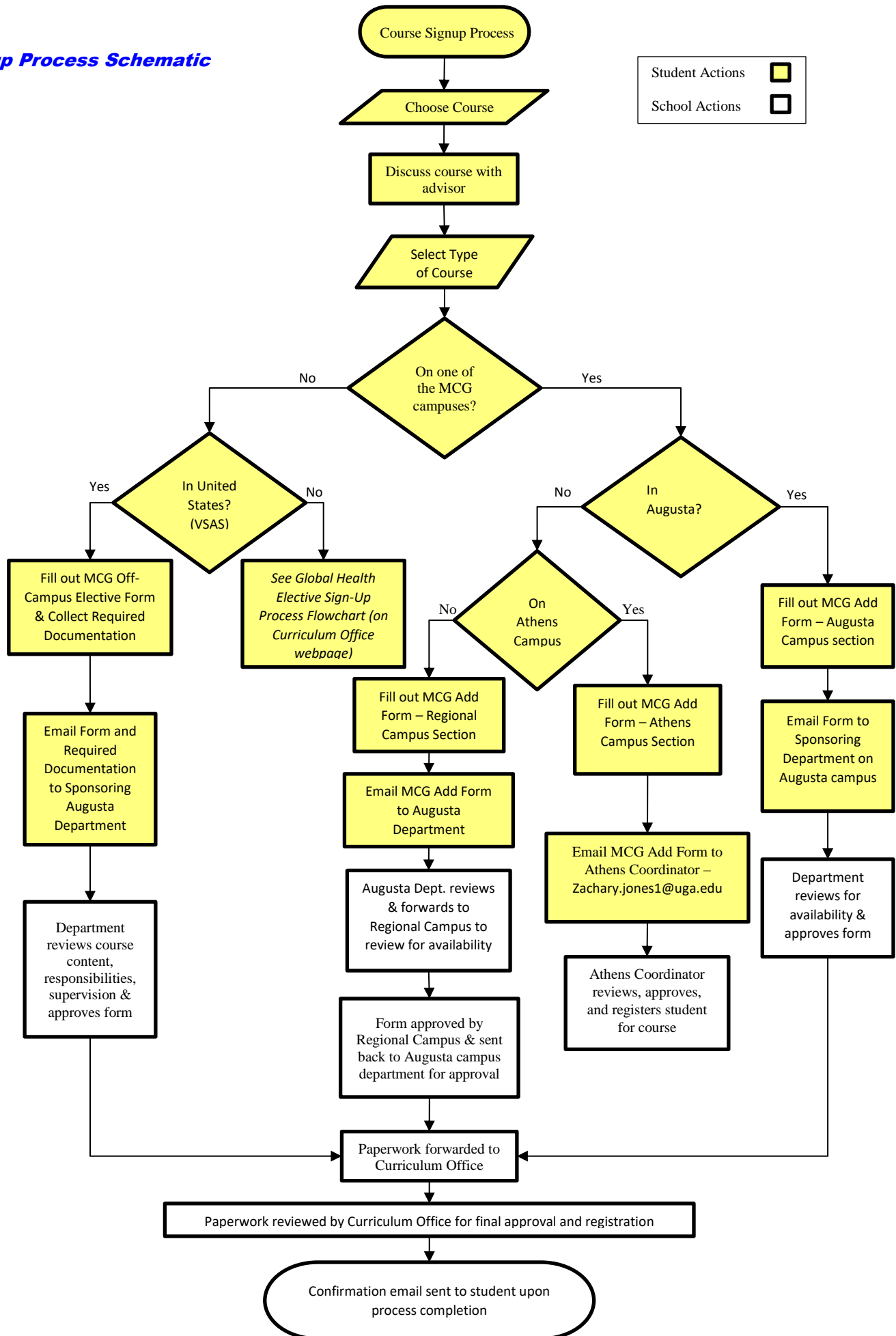
Please post the Drop/Add schedule in a prominent location and take it seriously!

Except for extraordinary circumstances, the above policy will be strictly enforced.

### ***Course Listings***

- C.** The following pages list all of the selective and elective courses available through the Medical College of Georgia. Each listing contains the course title, course number, course category, course classification (see description above), contact person, months offered, and a brief description of the course.
- D.** Each course description also has an eligibility listing, which refers to the course prerequisites. Courses listed as “All” have no prerequisites and can be taken by all students. Courses listed as “4th Year Only” can be taken only by students who have completed all 3rd year clerkships. Courses listed as “3rd Year plus clerkship” may be taken by any student who has completed the clerkship within that department – in other words all 4th year students and 3rd year students once they have completed the clerkship in the department offering the elective. Note that 3rd Year students can find a list of courses which are open to them on page 56 of this bulletin. A few courses have additional requirements which are listed in this category as well.
- E.** The first pages of the bulletin list the courses which fulfill the selective requirements. Courses not listed in this section do not fulfill these requirements. As mentioned above, if a student wishes to take another course from the selective lists, s/he may do so and count that course as an elective.
- F.** With few exceptions, course locations are not included in the course listing. Most of the listed courses are available on the Augusta campus. Many of the courses are also offered on the various regional campuses as well. For information about courses on the Augusta campus, please check with the sponsoring department. For information about courses on the regional campuses, please check with the corresponding regional campus office.
- G.** All courses listed are subject to the availability of faculty and resources. Because of lack of available faculty or other resources, some courses may not be offered at a given time even though they are listed in the bulletin. Check with the sponsoring department for more information about which courses are available currently.

## Signup Process Schematic



# Selectives

## **Critical Care Selective**

### ***Anesthesia Critical Care***

#### ***ANES 5015***

Category: Critical Care

Classification: Selective

Contact: Clerkship Coordinator, Regional  
Campus Coordinator

Eligible: 4<sup>th</sup> Year Only

Maximum Enrollment: 4

Months Offered: August - April

**Course Description:** This course is designed to educate and expose students to the general medical principles and management of critically ill surgical patients in the Intensive Care Unit environment. Students will participate in daily rounds with the critical care team following one to two patients per day. In addition students will participate in procedural interventions.

Assessment:    Faculty/Resident Evaluation  
                   Test/Quiz (BLS/ACLS)  
                   Presentation

### ***Medical Critical Care***

#### ***GMED 5034***

Category: Critical Care

Classification: Selective

Contact: Clerkship Coordinator, Regional  
Campus Coordinator

Eligible: 4<sup>th</sup> Year Only

Months Offered: all

**Course Description:** This elective is designed to provide an intensive experience in critical care medicine. Emphasis is placed upon clinical evaluation and management of critically ill patients: mechanical ventilatory support, hemodynamic and ventilatory monitoring and other critical care interventions. Didactic sessions, conferences and teaching rounds provide a broad view of clinical approaches to critically ill patients.

Assessment:    Faculty/Resident Evaluation  
                   Test/Quiz    Presentation  
                   Other

### ***Neurology Critical Care***

#### ***NEUR 5010***

Category: Critical Care

Classification: Selective

Contact: Clerkship Coordinator, Regional  
Campus Coordinator

Eligible: 4<sup>th</sup> Year Only

Months Offered: all

**Course Description:** This is a patient care elective. The student will have primary care responsibilities for a group of patients in the Neurological Critical Care Unit. The student will participate in rounds and conferences and will assist with the diagnostic procedures involving his/her patients. The course is designed to give students a firm grounding in the care of neurological patients in the critical care setting.

Assessment:    Faculty/Resident Evaluation  
                   Test/Quiz    Presentation  
                   Other:

### ***Neonatal Critical Care***

#### ***PEDS 5001***

Category: Critical Care

Classification: Selective

Contact: Clerkship Coordinator, Regional  
Campus Coordinator

Eligible: 4<sup>th</sup> Year Only

Months Offered: all

**Course Description:** Each day will involve patient care in the NICU. Students are expected to follow a minimum of 2-3 patients or 2/3 the load of interns on the team and work 4 nights on the Night Team and 2 weekend days. Students will also attend daily formal lectures and teaching rounds. The rotation is designed to help senior students develop the skills to gain clinical and technical competency in Neonatal-Perinatal Medicine.

Assessment:    Faculty/Resident Evaluation  
                   Test/Quiz    Presentation  
                   Other:



## ***Pediatric Critical Care***

### ***PEDS 5018***

Category: Critical Care

Classification: Selective

Contact: Clerkship Coordinator, Regional  
Campus Coordinator

Eligible: 4<sup>th</sup> Year Only

Months Offered: all

**Course Description:** This rotation is designed to teach students to assist in the care of critically ill children and develop a multiple organ systems approach for evaluation and treatment. Activities include evaluation of newly admitted patients to the pediatric intensive care unit, development of multiple organ systems-based evaluation and management plans on all patients, provision of daily organ systems-based written documentation on the progress of all their patients, and making oral presentations on rounds to the attending and other team members. Students will be required to work 4 consecutive nights on the Night Team and 2 weekend days.

Assessment:  Faculty/Resident Evaluation

Test/Quiz  Presentation

Other:

## ***Surgery Critical Care/Trauma***

### ***SURG 5005***

Category: Critical Care

Classification: Selective

Contact: Clerkship Coordinator, Regional Campus  
Coordinator

Eligible: 4<sup>th</sup> Year Only

Months Offered: all

**Course Description:** During this course students will be involved in the care of patients on the Trauma Service. These patients frequently have injuries and functional disruption of multiple organ systems, and therefore offer an opportunity in learning complex trauma and critical care management. Neurological, cardiovascular, pulmonary, and renal physiology are stressed and the frequent ultrasound, intracranial pressure monitoring, invasive cardiovascular monitoring, and mechanical ventilatory support provide extensive experience in care of the critically ill. Students will be an active member of the trauma team.

Assessment:  Faculty/Resident Evaluation

Test/Quiz  Presentation

Other:

## **Sub-I Selective**

### **Family Medicine Sub-I**

#### **FMPC 5003**

Category: Sub-I

Classification: Selective

Contact: Clerkship Coordinator, Regional  
Campus Coordinator

Eligible: 4<sup>th</sup> Year Only

Months Offered: all

**Course Description:** Students will function as a sub-I in order to develop the skills necessary to function as a successful house officer in the inpatient and ambulatory setting of family medicine.

Assessment:  Faculty/Resident Evaluation

Test/Quiz  Presentation

Other:

### **Medicine Sub-I**

#### **GMED 5011**

Category: Sub-I

Classification: Selective

Contact: Clerkship Coordinator, Regional  
Campus Coordinator

Eligible: 4<sup>th</sup> Year Only

Months Offered: all

**Course Description:** Students taking the acting internship will essentially function as an intern on the team, admitting patients in sequence with the interns and working directly under the resident. Acting interns will be expected to attend all conferences the interns attend. The acting intern will complete the initial work up and determine the treatment plan in conjunction with the resident. The acting intern will function as the primary care physician for his/her patients but will be closely supervised in all activities by the resident and attending faculty physician. The acting interns on call schedule will be identical to that of the ward team.

Assessment:  Faculty/Resident Evaluation

Test/Quiz  Presentation

Other:

## **Adult Neurology Sub-I**

### **NEUR 5001**

Category: Sub-I

Classification: Selective

Contact: Clerkship Coordinator, Regional  
Campus Coordinator

Eligible: 4<sup>th</sup> Year Only

Months Offered: all

**Course Description:** This is a patient care course. The student will have primary care responsibilities for a block of neurological inpatients. The student will participate in rounds and conferences and will assist with the diagnostic procedures involving his/her patients. The course is designed to give students a firm grounding in neurological concepts and in the recognition and initial management of common neurological problems in the inpatient setting.

Assessment:  Faculty/Resident Evaluation

Test/Quiz  Presentation

Other:

## **Child Neurology Sub-I**

### **NEUR 5009**

Category: Sub-I

Classification: Selective

Contact: Clerkship Coordinator, Regional  
Campus Coordinator

Eligible: 3<sup>rd</sup> Year plus Clerkship

Months Offered: all

**Course Description:** This is a patient care course. The student will have primary care responsibilities for a block of pediatric neurological inpatients. The student will participate in rounds and conferences and will assist with the diagnostic procedures involving his/her patients. The course is designed to give students a firm grounding in neurological concepts and in the recognition and initial management of common neurological problems in the inpatient setting.

Assessment:  Faculty/Resident Evaluation

Test/Quiz  Presentation

Other:

***Obstetrics and Gynecology Sub-I***  
***OBGN 5009***

Category: Sub-I  
Classification: Selective  
Contact: Clerkship Coordinator, Regional  
Campus Coordinator  
Eligible: 4<sup>th</sup> Year Only  
Months Offered: all (August – October may be restricted to OB declaring students)

**Course Description:** The student will participate in the expanded management of inpatient and outpatient gynecology patients. Outpatient experience will include exposure to patients with common problems, as well as routine preventative care. The inpatient experience will consist of participation in the operating room, inpatients consults, and following assigned patients. Students will be responsible for their assigned patients. During the Sub-I course, students will be a part of one of four teams: Gynecologic Oncology, Benign Gynecology, Maternal Fetal Medicine or Urogynecology.

Assessment:  Faculty/Resident Evaluation  
 Test/Quiz  Presentation  
 Other: Presentation

***Neonatal Sub-I***  
***PEDS 5001***

Category: Sub-I  
Classification: Selective  
Contact: Clerkship Coordinator, Regional  
Campus Coordinator  
Eligible: 4<sup>th</sup> Year Only  
Months Offered: all

**Course Description:** Each day will involve patient care in the NICU. Students are expected to follow a minimum of 2-3 patients or 2/3 the load of interns on the team and work 4 nights on the Night Team and 3 weekend days. Students will also attend daily formal lectures and teaching rounds. The rotation is designed to help senior students develop the skills to gain clinical and technical competency in Neonatal-Perinatal Medicine. Students doing this rotation as a Sub-I will be required to complete a web-based portfolio and a checklist which includes performing a variety of activities including writing admission notes and orders, discharge summaries, and daily notes, as well as performing certain aspects of the physical exam.

Assessment:  Faculty/Resident Evaluation  
 Test/Quiz  Presentation  
 Other: Web-based portfolio

***Pediatrics Sub-I***  
***PEDS 5009***

Category: Sub-I  
Classification: Selective  
Contact: Clerkship Coordinator, Regional  
Campus Coordinator  
Eligible: 4<sup>th</sup> Year Only  
Months Offered: all

**Course Description:** Students will function in the role of a first year pediatric resident. The upper-level pediatric resident on the team is responsible for directly supervising and writing daily notes on the senior student's patients. Activities will include evaluating newly admitted pediatric inpatients under the supervision of a pediatric resident and/or attending, developing evaluation and management plans on all patients, providing daily written documentation on the progress of all their patients, making oral presentations on rounds to the attending and other team members, and handing off patients between Day Team and Night Team. Students will be required to complete a web-based portfolio and a checklist which includes performing a variety of activities including writing admission notes and orders, discharge summaries, and daily notes, as well as performing certain aspects of the physical exam. Students are expected to follow a minimum of 2-3 patients or 2/3 the load of interns on the team and work 4 nights on the Night Team and 3 weekend days.

Assessment:  Faculty/Resident Evaluation  
 Test/Quiz  Presentation  
 Other: Web-based portfolio

***Surgery Sub-I***  
***SURG 5007***

Category: Sub-I  
Classification: Selective  
Contact: Clerkship Coordinator  
Eligible: 4<sup>th</sup> Year Only  
Months Offered: all

**Course Description:** During this course students will function as substitute interns on a surgical service. Students will be assigned a specific surgical service and will function as an integral part of that service. The student is expected to initiate the clinical data base, begin diagnostic measures, and where possible, perform surgical procedures with supervision. In addition he/she will participate in the teaching responsibilities, conferences, clinics, and operating experiences of the service to which he/she is assigned and he/she will be assigned night call responsibilities. Surgical services include MIDDS Surgery, Pediatric Surgery, Vascular Surgery, Transplant Surgery, Surgical Oncology, Acute Care Surgery, VAMC Surgery, Plastic Surgery, Neurosurgery, Otolaryngology, Orthopedics and Urology

Assessment:  Faculty/Resident Evaluation  
 Test/Quiz  Presentation  
 Other:

## ***Surgery Sub-I for Military Students***

### ***SURG 5016***

***This course is for MCG Military students only.***

Category: Sub-I

Classification: Selective

Contact: Clerkship Coordinator

Eligible: 4<sup>th</sup> Year Only with approval of Surgery Clerkship  
Director

Months Offered: all

**Course Description:** During this course students will function as substitute interns on a General Surgical service at an approved institution (must be an academic institution which has house staff). Students will be assigned a specific surgical service and will function as an integral part of that service. The student is expected to initiate the clinical data base, begin diagnostic measures, and where possible, perform surgical procedures with supervision. In addition he/she will participate in the teaching responsibilities, conferences, clinics, and operating experiences of the service to which he/she is assigned and he/she will be assigned night call responsibilities.

Assessment:  Faculty/Resident Evaluation

Test/Quiz  Presentation

Other:

# **Electives**

## **Anesthesiology and Perioperative Medicine**

### **Anesthesiology Research**

#### **ANES 5002**

Category: Research  
Classification: Research  
Contact: Carol Dickerson, Research Manager  
Eligible: All  
Months Offered: all, by arrangement

**Course Description:** This course is designed to introduce the student to scientific discovery, experimental design, methodology, and data analysis. Our research faculty studies different aspects of sickle cell disease. These areas include the development of gene correction technologies, regulation of hemoglobin expression, cell adhesion, lung injury, and pain research. Our projects are translational in nature, i.e. we use basic science tools and preclinical animal models to study clinically relevant questions

Assessment:  Faculty/Resident Evaluation  
 Test/Quiz  Presentation  
 Other:

### **Anesthesiology Off-Campus Externship**

#### **ANES 5003**

***This course requires application using VSAS or other arrangements made by the student.***

***Off-Campus Add Form Required***

Category: Clinical  
Classification: Off-Campus  
Contact: Clerkship Coordinator  
Eligible: 4<sup>th</sup> Year Only  
Months Offered: all

**Course Description:** Clinical experience in Anesthesiology at an off campus hospital introducing student to the basic principles of anesthesiology; critical care medicine or pain management and development of basic knowledge for the perioperative management of the patient.

Assessment:  Faculty/Resident Evaluation  
 Test/Quiz  Presentation  
 Other:

### **Pain Management**

#### **ANES 5008**

Category: Clinical  
Classification: 1  
Contact: Clerkship Coordinator, Regional Campus Coordinator  
Eligible: All  
Months Offered: August - June

**Course Description:** This course is designed to help the student recognize commonly seen acute, chronic and cancer pain conditions as well as develop a basic understanding in pharmacological as well as interventional treatment modalities. Students will complete at least 2 complete patient evaluations per day as well as participate in 2 half days per week of procedures. In addition, students will make clinical rounds with a Pain Psychologist and a Clinical Pharmacologist.

Assessment:  Faculty/Resident Evaluation  
 Test/Quiz  Presentation  
 Other: (Reading assignment)

### **Anesthesiology Externship**

#### **ANES 5011**

Category: Clinical  
Classification: 1  
Contact: Clerkship Coordinator, Regional Campus Coordinator  
Eligible: All after completing Asepsis Training  
Months Offered: August - June

**Course Description:** This course is designed to introduce medical students to the basic principles and practice of Anesthesiology and Perioperative medicine. Students will be assigned to Anesthesiology Faculty and Residents in some locations on a daily basis in the operating room as well as other clinical settings.

Assessment:  Faculty/Resident Evaluation  
 Test/Quiz  Presentation  
 Other:

## ***Respiratory Care***

### ***ANES 5014***

Category: Clinical

Classification: 1

Contact: Clerkship Coordinator, Regional  
Campus Coordinator

Eligible: All

Maximum Enrollment: 25 (Minimum 5)

Months Offered: July - April

**Course Description:** This course is designed to help students develop the skills necessary to treat patients with respiratory insufficiency, manage a patient in need of mechanical ventilation or other respiratory therapy modalities as indicated. In addition, students should be able to provide adequate BLS and ACLS to patients in a "Code Blue" situation. Students attend class for 4 weeks covering the basic concepts of respiratory pathophysiology concentrating on mechanical ventilation. This is achieved through a combination of lecture, hand-on demonstration, and weekly quizzes. Students will also be expected to give a presentation.

Assessment:     Faculty/Resident Evaluation  
                   Test/Quiz (BLS/ACLS)  
                   Presentation     Other:

## ***Anesthesia Critical Care***

### ***ANES 5015***

See Page 7 – Critical Care Listing

# **Biochemistry and Molecular Biology**

## **Biochemistry and Molecular Biology**

### **Research**

#### **BCMB 5002**

Category: Research

Classification: Research

Contact: Kim Lord, Biochemistry Faculty

Eligible: All with faculty approval

Maximum Enrollment:

Months Offered: by arrangement

**Course Description:** Critical evaluation of research articles; design and execution of specific experiments; training and experience in various laboratory techniques; analysis and critical interpretation of experimental data; participation in laboratory weekly meetings and departmental seminars.

Assessment:  Faculty/Resident Evaluation

Test/Quiz  Presentation

Other: Oral Examination



## **Cellular Biology and Anatomy**

### **Anatomy Research**

#### **ANAT 5002**

Category: Research

Classification: Research

Contact: Department Faculty

Eligible: All with faculty approval

Months Offered: All

**Course Description:** The student will participate in writing a short research proposal relevant to a project in the PI's lab. The student will gain knowledge of the literature of the field, will obtain training and experience in appropriate laboratory methods, analysis and critical interpretation of experimental data; will participate/attend journal clubs, lab meetings and departmental seminars as deemed appropriate by the PI.

Assessment:     Faculty/Resident Evaluation  
                   Test/Quiz     Presentation  
                   Other: Written summary of research

### **Clinical Anatomy and Teaching Skills**

#### **ANAT 5005**

Category: Teaching

Classification: 1

Contact: Department Faculty

Eligible: All with faculty approval

Months Offered: August - April

Note: this course is currently offered in Athens only; students on other campuses should refer to MEDI 5012 the Medical Education elective

**Course Description:** The student will have an opportunity to reexamine anatomy relevant to future specialty training and to have a mentored teaching experience among first year medical students in the gross anatomy lab. Students will be assigned to groups according to their area of interest.

Assessment:     Faculty/Resident Evaluation  
                   Test/Quiz     Presentation  
                   Other: Prosection

## **Dermatology**

### **Dermatology Externship**

#### **DERM 5001**

Category: Clinical

Classification: 1

Contact: Clerkship Coordinator, Regional Campus  
Coordinator

Eligible: All

Months Offered: all

**Course Description:** Students will see Dermatology patients in the hospital clinic. When available students will participate in Dermatopathology teaching conferences, Morphology Conferences, Grand Rounds, Basic Science teaching conferences, and Journal Club. Supervision will be provided by the dermatology faculty as well as house staff in some locations.

Assessment:  Faculty/Resident Evaluation

Test/Quiz  Presentation

Other:

### **Dermatology Off-Campus Externship**

#### **DERM 5002**

***This course requires application using VSAS or other arrangements made by the student.***

***Off-Campus Add Form Required***

Category: Clinical

Classification: Off Campus

Contact: Clerkship Coordinator

Eligible: 4<sup>th</sup> Year ONLY after taking DERM 5001

Months Offered: all

**Course Description:** Students will learn dermatology and dermatopathology in a variety of inpatient and outpatient settings depending on the structure of the chosen rotation.

Assessment:  Faculty/Resident Evaluation

Test/Quiz  Presentation

Other:

## **Advanced Dermatology**

### **DERM 5003**

Category: Clinical

Classification: 1

Contact: Clerkship Coordinator

Eligible: 4<sup>th</sup> Year ONLY after taking DERM 5001

Months Offered: all

**Course Description:** This elective is designed for students who plan to enter Dermatology residency training. Like students in the 5001 course, participants will see patients at the MCG Hospital and Clinics as well as in the VAMC Dermatology Clinic. Students will participate in Dermatopathology teaching conferences, Morphology Conferences, Grand Rounds, Basic Science teaching conferences, and Journal Club. Supervision will be provided by the dermatology faculty and house staff. In addition students in this course will be given more opportunity to participate in Dermatology research and scholarly projects.

Assessment:  Faculty/Resident Evaluation

Test/Quiz  Presentation

Other:

## **Emergency Medicine**

### **Emergency Medicine Externship**

#### **EMED 5002**

Category: Clinical

Classification: 1

Contact: Clerkship Coordinator, Regional  
Campus Coordinator

Eligible: 4<sup>th</sup> Year ONLY after taking EMED 5001

Months Offered: all

**Course Description:** This rotation is designed for students interested in Emergency Medicine as a career to give them a chance to work more closely with EM faculty. Students will serve as externs in the Emergency Department seeing patients under the direct supervision of EM faculty. Students will assume the primary medical care responsibilities for patients and work independent of EM resident input. Students will also present a lecture during weekly EM grand rounds. Students will rotate on a local ambulance service for two shifts.

Assessment:  Faculty/Resident Evaluation

Test/Quiz  Presentation

Other:

### **Emergency Medicine Research**

#### **EMED 5004**

Category: Research

Classification: Research

Contact: Dr. Jim Wilde, Clerkship Coordinator,  
Regional Campus Coordinator

Eligible: All with faculty approval

Months Offered: by arrangement

**Course Description:** Students will choose a research topic with the aid of the department research director, who will match them to an appropriate faculty member within the Department of EM. The students will perform a literature search and produce a short written research proposal for approval by the Human Assurance Committee. With the aid of the faculty advisor and a research statistician, the student will conduct the research project, analyze the data, and create a one paragraph abstract describing the research findings. In some cases the department may have well developed research projects that require additional assistance. These projects may also be undertaken to fulfill the requirements of the elective.

Assessment:  Faculty/Resident Evaluation

Test/Quiz  Presentation

Other: written abstract

### **Emergency Medicine Off-Campus Externship**

#### **EMED 5005**

**This course requires application using VSAS or other arrangements made by the student.**

**Off-Campus Add Form Required**

Category: Clinical

Classification: Off Campus

Contact: Clerkship Coordinator

Eligible: 4<sup>th</sup> Year ONLY after taking EMED 5001

Months Offered: all

**Course Description:** Teaching materials will be provided by the chosen facility. The rotation should provide ample clinical experience, patient contact, and procedures. Some sites may have dedicated procedure practice sessions. Clinical instruction in the initial evaluation and stabilization of the acutely ill and injured patient should be provided by working alongside Emergency Medicine faculty (and possibly residents) who are present 24 hours a day. Students should work a variety of shifts including days, evenings and nights, including some weekends.

Assessment:  Faculty/Resident Evaluation

Test/Quiz  Presentation

Other:

### **International and Travel Medicine**

#### **EMED 5007**

**Apply Through Study Abroad – Terra Dotta System**

Category: Clinical

Classification: International

Contact: Dr. Dan Kaminstein, Curriculum

Eligible: All, but completion of 3<sup>rd</sup> year recommended

Months Offered: by arrangement

**Course Description:** This will be a supervised clinical experience with students engaging in patient care under the direct supervision of faculty trained and familiar with travel medicine, clinical tropical medicine, and medicine in the developing world. Opportunities exist ranging from hospital-based experience to remote mobile village clinics. Students may join MCG faculty on a planned trip anywhere in the world (typically 10-14 days), or arrange their own experience to a site where they will be supervised. A number of lectures and reading materials are required as appropriate to traveling in developing nations. Some six months planning and interaction with the course director/team leader must occur before the beginning of the rotation month to begin vaccinations, plan travel and organize supplies. Students will be responsible for all costs, e.g. airfare and ground expenses.

As an elective for credit toward graduation from medical school, it is inherent that the experience have significant medical educational content; eg a foreign language immersion class will not be approved unless there is patient contact to practice those skills.

Although this course has an Emergency Medicine course number, the course does not have to be an EM experience. The course can cover any specialty.

**Special Circumstances:** In addition to the usual Curriculum Office paperwork, all sites and travel arrangements must be approved by the Director of Global Health (Dr. Kaminstein), the University Study Abroad Office, and the Curriculum Office. This review may include a review of visa requirements and personal safety issues (travel, food, water, diseases, and vaccinations). Please allow at least 6 months for the approval process. Per MCG Policy, a site in any country with a travel warning from the US State Department (<http://travel.state.gov/content/passports/english/alertswarnings.html>) will not be approved, and approval may be rescinded at any time if changes happen.

Assessment:  Faculty/Resident Evaluation  
 Test/Quiz  Presentation  
 Other: written summary

### ***Emergency Ultrasound*** ***EMED 5008***

Category: Clinical  
Classification: 1  
Contact: Clerkship Coordinator, Regional Campus Coordinator  
Eligible: 4<sup>th</sup> Year Only  
Months Offered: September – March; even though the course covers 7 months students must register for the course in one month

**Course Description:** This course will consist of 7 months of instruction and hands-on practice. The initial course begins in July lasting 16 hours over 2 days and includes lectures and hands-on practice with human models. Each month thereafter consists of a two hour lecture and discussion and two eight hour shifts in the ED practicing EUS skills. Required readings will be provided. It is recommended that the student take EMED 5001 during July in order to be available for the 16 hour course. The student will work one-on-one with one of the course directors to practice ultrasound skills while in the emergency department. Students may spend more time with the instructor during each month, but two 8 hours shifts are required. If more than 3 people apply for the course, selection will be made based on completion of the requirements and an interview.

Assessment:  Faculty/Resident Evaluation  
 Test/Quiz (quiz after lectures)  
 Presentation  Other:

### ***Rural Emergency Medicine*** ***EMED 5013***

***This course does not replace the Emergency Medicine Clerkship. Students must still take EMED 5001.***

Category: Clinical  
Classification: 1  
Contact: Regional Campus Coordinators  
Eligible: 3<sup>rd</sup> Year 2<sup>nd</sup> Semester  
Months Offered: all

**Course Description:** The schedule includes approximately 34-36 hours of patient contact per week. Students will spend at least one session with a triage nurse in the ED. Students will ride one shift with EMS and one with paramedics during this rotation. . Students will work a variety of shifts.

Assessment:  Faculty/Resident Evaluation  
 Test/Quiz  Presentation  
 Other:

### ***Emergency Medical Services*** ***EMED 5014***

Category: Clinical  
Classification: 1  
Contact: Athens Campus Coordinator  
Eligible: 4<sup>th</sup> Year Only  
Months Offered: all  
Note: this course is currently offered only on the Athens campus

**Course Description:** The course is designed to give students a better understanding EMS systems. Students will get experience with EMS administration and operations, on-line and off-line medical control, and disaster medicine. Students will also gain experience with the prehospital assessment and transport of patients by participating in ride-alongs with paramedics in the field.

Assessment:  Faculty/Resident Evaluation  
 Test/Quiz  Presentation  
 Other:

## **Family Medicine**

### **Family Medicine Sub-I**

#### **FMPC 5003**

See Page 9 – Sub-I Listing

### **Family Medicine Off-Campus Externship**

#### **FMPC 5007**

***This course requires application using VSAS or other arrangements made by the student.***

***Off-Campus Add Form Required***

Category: Clinical

Classification: Off-Campus

Contact: Clerkship Coordinator

Eligible: 4<sup>th</sup> Year Only

Months Offered: all

**Course Description:** This elective gives students the opportunity to pursue educational opportunities in other residencies or practices outside the MCG system.

Assessment:  Faculty/Resident Evaluation  
 Test/Quiz  Presentation  
 Other:

### **Family Medicine Externship**

#### **FMPC 5008**

Category: Clinical

Classification: 1

Contact: Clerkship Coordinator, Regional  
Campus Coordinator

Eligible: All

Months Offered: all

**Course Description:** Students will work in a variety of practice locations in order to gain experience in the evaluation and management of patients with undifferentiated clinical problems encountered in the practice of Family Medicine. Note that this course is designed for students to work in a variety of private practice locations in the state but does not meet the requirements for the Sub-I selective.

Assessment:  Faculty/Resident Evaluation  
 Test/Quiz  Presentation  
 Other:

### **Family Medicine Research**

#### **FMPC 5009**

Category: Research

Classification: Research

Contact: Department Faculty, Clerkship Coordinator,  
Regional Campus Coordinator

Eligible: All

Months Offered: all

**Course Description:** This course is designed to allow students to pursue research opportunities in Family Medicine.

Assessment:  Faculty/Resident Evaluation  
 Test/Quiz  Presentation  
 Other:

### **Primary Care Sports Medicine**

#### **FMPC 5015**

Category: Clinical

Classification: 1

Contact: Clerkship Coordinator, Regional  
Campus Coordinator

Eligible: 4<sup>th</sup> Year Only

Months Offered: all

**Course Description:**

This course is designed to give the students a clinical experience in Sports Medicine. Students will have the opportunity to experience the practice in the clinic setting as well as in the field-side delivery of care.

Assessment:  Faculty/Resident Evaluation  
 Test/Quiz  Presentation  
 Other:

### **Vulnerable Populations Elective**

#### **FMPC 5018**

Category: Clinical

Classification: 1

Contact: Clerkship Coordinator, Regional  
Campus Coordinator

Eligible: All

Months Offered: all

**Course Description:** Students will rotate in a variety of settings in order to appreciate the problems facing the homeless and other vulnerable populations and to gain an understanding of the resources available in the community to help these populations.

Assessment:  Faculty/Resident Evaluation  
 Test/Quiz  Presentation  
 Other: Community Project

## **Family Medicine Procedures**

### **FMPC 5019**

Category: Clinical

Classification: 1

Contact: Clerkship Coordinator, Regional  
Campus Coordinator

Eligible: 4<sup>th</sup> Year Only

Months Offered: all

**Course Description:** The course is designed to give students who are interested in Family Medicine exposure to the procedures commonly performed by Family Physicians including flexible sigmoidoscopy, upper endoscopy, colonoscopy, minor surgery, and treadmill evaluation.

Assessment:  Faculty/Resident Evaluation

Test/Quiz  Presentation

Other:

## **Health Policy and Advocacy**

### **FMPC 5020**

Category: Other

Classification: 1

Contact: Clerkship Coordinator, Regional  
Campus Coordinator

Eligible: All

Months Offered: all

**Course Description:** The course will engage students in researching key health policy topics and developing advocacy strategies to influence policy in these areas. Students will be engaged in discussions about required readings, literature reviews, and data analysis. Group discussions and small group work will be utilized to complete tasks. Sometimes group members may include full time faculty / staff assigned to certain topics and other times groups may be composed of solely students with a faculty lead. Students will be required to conduct extensive literature reviews and acquire latest research findings in topic area of interest, develop and participate in advocacy strategic planning, and develop and scholarly work products (e.g. fact sheets, position white papers, resolutions, etc.) and utilize these as indicated with various advocate groups.

Assessment:  Faculty/Resident Evaluation

Test/Quiz  Presentation

Other: Scholarly Work

## **Population Health/Business in Medicine**

### **FMPC 6000**

Category: Other

Classification: 1

Contact: Clerkship Coordinator

Eligible: All

Months Offered: All

**Course Description:** Students will rotate with the AU population health department in order to gain an understanding of the new models of health care. This will be an interdisciplinary four-week elective during the fourth year of medical school. Medical students will work with the population health team, pharmacy students, Nursing/DNP students, Physician Assistant (PA) students and other members of the healthcare team. The goal of the four-week elective would be for the students to identify and solve real problems facing hospitals and clinics today. Students will understand why the payment structure for healthcare is shifting from fee for service to pay for performance or Value Based Care. Students will understand and be able to explain key terms such as Population Health, Per Member per Month (PMPM), Share Savings, Hospital Value-Based Purchasing Program (VBP), Pay for Performance (P4P), and the Medicare Access Chip Reauthorization Act of 2015 (MACRA) or the Quality Payment Program (QPP). The students will gain a deeper understanding of the transformation of healthcare to meet the Quadruple Aim of the Institute of Healthcare Improvement (IHI), which is improving the patient experience of care, improving the health of populations, reducing the per capita cost of health care, and improving healthcare wellness.

Assessment:  Faculty/Resident Evaluation

Test/Quiz  Presentation

Other:

## **Bioethics Scholarly Activity**

### **FMPC 6001**

Category: Other

Classification: 1

Prerequisite: PHIL 5004, Foundations in Bioethics

Contact: Clerkship Coordinator

Eligible: All

Months Offered: All

**Course Description:** This course will provide bioethics graduate certificate candidates with a practical experience in performing scholarly work in bioethics. Under the guidance of the course director students will develop a research proposal, develop and conduct the project, analyze the data and make conclusions. The work should be of sufficient quality to be presented as a poster in a research competition or to be submitted for publication in a peer reviewed journal.

Assessment:  Faculty/Resident Evaluation

Test/Quiz  Presentation

Other:

**Bioethics Capstone Course**

**FMPC 6002**

Category: Other  
Classification: 1  
Prerequisite: PHIL 5004, Bioethics Scholarly Activity  
Contact: Clerkship Coordinator  
Eligible: All  
Months Offered: All

Course Description: This course will provide bioethics graduate certificate candidates the opportunity to present their completed research at a regional bioethics conference. Students will attend the two day annual Georgia Healthcare Ethics Consortium at Emory University in the spring of the academic year. They will go as attendees, and will present their completed research at the annual bioethics research poster competition.

Assessment:  Faculty/Resident Evaluation  
 Test/Quiz  Presentation  
 Other:

**Bioethics Practicum**

**FMPC 6003**

Category: Other  
Classification: 1  
Contact: Clerkship Coordinator  
Eligible: All  
Months Offered: All

Course Description: This course will provide bioethics graduate certificate candidates with a practical experience in learning and practicing bioethics. Students will read sentinel papers from the primary literature in bioethics, discuss clinical cases with ethical dilemmas in small groups, participate in ethics consults and end of life conversations with consultants and teach learned ethical topics to fellow students.

Assessment:  Faculty/Resident Evaluation  
 Test/Quiz  Presentation  
 Other

**Food as Medicine: An Elective Addressing Diet-Related Illnesses Affected by Poverty**

**FMPC 6004**

Category: Other  
Classification: 1  
Contact: Clerkship Coordinator  
Eligible: All  
Months Offered: All

Course Description: Students will gain a first-hand understanding of the barriers to health – especially as they influence diet – in an impoverished urban neighborhood. Attend nutrition education lectures, help conduct and attend nutrition-based cooking classes with a professional chef during the month, attend a bariatric information session with a health psychologist, work with members of the American Culinary Federation and Augusta District Dietetic Association, and conduct a home-based study of one or two families to analyze the connections between poverty and diet-related illnesses.



## **Medicine**

### ***Rheumatology Externship***

#### ***GMED 5010***

Category: Clinical  
Classification: 1  
Contact: Clerkship Coordinator, Regional  
Campus Coordinator  
Eligible: 4<sup>th</sup> Year Only  
Months Offered: all

**Course Description:** Supervised by attending physicians, students will participate in primarily outpatient consultations, participate in teaching conferences, gain experience in pertinent diagnostic procedures, evaluate and follow patients in the faculty practices, and learn pathophysiology, differential diagnosis, clinical manifestations, management, and therapy of rheumatology.

Assessment:  Faculty/Resident Evaluation  
 Test/Quiz  Presentation  
 Other:

### ***Medicine Sub-I***

#### ***GMED 5011***

See Page 9 – Sub-I Listing

### ***Hematology/Oncology Externship***

#### ***GMED 5012***

Category: Clinical  
Classification: 1  
Contact: Clerkship Coordinator, Regional  
Campus Coordinator  
Eligible: 4<sup>th</sup> Year Only  
Months Offered: all

**Course Description:** This elective is designed to provide the basics in clinical hematology and medical oncology. In depth study of blood and marrow morphology is emphasized. An approach to diagnosis and management as well as general principles of cancer chemotherapy will be stressed. The importance of interdisciplinary cancer decision-making (internist, surgeon, radiation therapist) will be emphasized. Two half-day clinics each week are arranged to emphasize the diagnosis and therapy of common hematologic and oncologic disorders.

Assessment:  Faculty/Resident Evaluation  
 Test/Quiz  Presentation  
 Other:

### ***Nephrology Externship***

#### ***GMED 5013***

Category: Clinical  
Classification: 1  
Contact: Clerkship Coordinator, Regional  
Campus Coordinator  
Eligible: 4<sup>th</sup> Year Only  
Months Offered: all

**Course Description:** This elective is designed to provide the basics in nephrology. Students will gain inpatient experience in managing patients with renal disease including hemo and peritoneal dialysis, nephritic syndrome and uremic complications. Procedural opportunities may include dialysis catheter insertion.

Assessment:  Faculty/Resident Evaluation  
 Test/Quiz  Presentation  
 Other:

### ***Rehabilitation Medicine Externship***

#### ***GMED 5014***

Category: Clinical  
Classification: 1  
Contact: Clerkship Coordinator, Regional  
Campus Coordinator  
Eligible: 4<sup>th</sup> Year Only  
Months Offered: all

**Course Description:** Objectives of the elective will be to learn general principles of rehabilitation medicine in the hospital setting, in addition to participation in a multidisciplinary approach to treatment of patients undergoing rehabilitation. The student will have some clinical responsibility for patients admitted to the hospital and follow them through their rehabilitation. Specialty programs for Brain Injury, Pediatric Rehab. Spinal Cord Injury, Stroke Rehab.

Assessment:  Faculty/Resident Evaluation  
 Test/Quiz  Presentation  
 Other:



### ***Nephrology Consult***

#### ***GMED 5016***

Category: Clinical

Classification: 1

Contact: Clerkship Coordinator, Regional  
Campus Coordinator

Eligible: 3<sup>rd</sup> Year plus Clerkship

Months Offered: all

**Course Description:** This elective is designed to enable the student to gain experience in clinical nephrology through participation in inpatient consultations, teaching conferences, and once weekly general nephrology outpatient clinic. Students will be a part of an active consultation service following patients with complex problems in the ICU and on the inpatient wards. They will also learn the skills needed to perform a urinalysis

Assessment:  Faculty/Resident Evaluation

Test/Quiz  Presentation

Other:

### ***Cardiology Consultation Service***

#### ***GMED 5017***

Category: Clinical

Classification: 1

Contact: Clerkship Coordinator, Regional  
Campus Coordinator

Eligible: 3<sup>rd</sup> Year plus Clerkship

Months Offered: all

**Course Description:** The elective is an integrated rotation between the cardiology consult service and the special procedure labs. Student's time will be divided between the consult service and the labs. On the consult service the student will be exposed to various cardiovascular diseases in medical and pre and post-operative surgical in-patients. Each week the student will spend one day in one of the special procedures laboratories (cardiac catheterization lab, ECHO lab, electrophysiology labs and Nuclear/stress testing lab.)

Assessment:  Faculty/Resident Evaluation

Test/Quiz  Presentation (GRU)

Other:

### ***Gastroenterology Externship***

#### ***GMED 5021***

Category: Clinical

Classification: 1

Contact: Clerkship Coordinator, Regional  
Campus Coordinator

Eligible: 3<sup>rd</sup> Year plus Clerkship

Months Offered: all

**Course Description:** This course is designed to provide an understanding of clinical aspects of diseases of the digestive system, pancreas and liver, including endoscopy, interpretation of gastrointestinal x-rays, biopsies and laboratory results. The course occurs in a variety of practice settings including hospital consults, outpatient clinics and endoscopy. Supervision is provided by Gastroenterologists as well as house staff in some locations.

Assessment:  Faculty/Resident Evaluation

Test/Quiz  Presentation

Other:

### ***Pulmonology Externship***

#### ***GMED 5023***

Category: Clinical

Classification: 1

Contact: Clerkship Coordinator, Regional  
Campus Coordinator

Eligible: 4<sup>th</sup> Year Only

Months Offered: all

**Course Description:** This elective is designed to provide experience in consultative pulmonary medicine. Emphasis is placed upon the clinical evaluation of patients with altered lung function, and the appropriate use of both invasive and noninvasive pulmonary diagnostic procedures. The student will gain experience in interpretation of chest roentgenograms, pulmonary function tests, and arterial blood gases. Selected pulmonary topics are covered in the weekly pulmonary conference.

Assessment:  Faculty/Resident Evaluation

Test/Quiz  Presentation

Other:

### ***Infectious Diseases Externship***

#### ***GMED 5025***

Category: Clinical

Classification: 1

Contact: Clerkship Coordinator, Regional  
Campus Coordinator

Eligible: 4<sup>th</sup> Year Only

Months Offered: all

**Course Description:** This clinical consultation service provides experience in the diagnosis and management of patients with infections, interpretation of stained specimen cultures and sensitivity data, serology and the appropriate use of antimicrobial and antiviral agents. The elective consists of inpatient consultative rounds as well as the opportunity for exposure to infectious disease outpatient clinics and conferences. On call availability is needed.

Assessment:  Faculty/Resident Evaluation

Test/Quiz  Presentation

Other:

### ***Medicine Off-Campus Externship***

#### ***GMED 5027***

***This course requires application using VSAS or other arrangements made by the student.***

***Off-Campus Add Form Required***

Category: Clinical

Classification: Off-Campus

Contact: Clerkship Coordinator

Eligible: 4<sup>th</sup> Year Only

Months Offered: all

**Course Description:** This course is designed to give students a chance to rotate in an Internal Medicine or subspecialty program at another hospital or location.

Assessment:  Faculty/Resident Evaluation

Test/Quiz  Presentation

Other:

### ***Medicine Research***

#### ***GMED 5028***

Category: Research

Classification: Research

Contact: Department Faculty, Clerkship Coordinator,  
Regional Campus Coordinator

Eligible: 4<sup>th</sup> Year Only

Months Offered: all

**Course Description:** This rotation provides the students with the opportunity to participate in research programs being conducted by members of the faculty of the Department of Medicine.

Assessment:  Faculty/Resident Evaluation

Test/Quiz  Presentation

Other:

### ***Medical Critical Care***

#### ***GMED 5034***

See Page 7 – Critical Care Listing

### ***Endocrinology Externship***

#### ***GMED 5039***

Category: Clinical

Classification: 1

Contact: Clerkship Coordinator, Regional  
Campus Coordinator

Eligible: 4<sup>th</sup> Year Only

Months Offered: all

**Course Description:** During this rotation, thyroid, adrenal, parathyroid, pituitary and gonadal diseases as well as diabetes, developmental problems, virilization and electrolyte disorders will be discussed. There will be opportunities for didactic presentations and students will be expected to read relevant clinical literature. Student responsibilities will include participation in inpatient consultation and clinic activities, as well as the weekly clinical conference.

Assessment:  Faculty/Resident Evaluation

Test/Quiz  Presentation

Other:

### ***Cardiology Externship***

#### ***GMED 5040***

Category: Clinical

Classification: 1

Contact: Clerkship Coordinator

Eligible: 3<sup>rd</sup> Year plus Clerkship

Months Offered: all

**Course Description:** Students will have exposure to clinical cardiology both in the hospital and the office through involvement in the evaluation of new patients and routine follow-up of established patients. They will become familiar with Treadmill Exercise Testing, both in the office as well as hospital setting. The student will be exposed to both M mode echocardiography as well as two dimensional sector scanning, Doppler Echo and transesophageal echo. The students will also have exposure to cardiac catheterization and pacemaker insertion. Students interested in cardiology or internal medicine are preferred.

Assessment:  Faculty/Resident Evaluation

Test/Quiz  Presentation

Other:

### ***Epidemiology Atlanta Externship***

#### ***GMED 5056***

Category: Clinical

Classification: 1

Contact: Clerkship Coordinator

Eligible: 4<sup>th</sup> Year Only

Months Offered: September - June

**Course Description:** This elective is designed to introduce the student to applied epidemiology, preventive medicine, and public health as practiced at CDC. Students have the opportunity to actively assist in epidemiologic investigations of infectious diseases and in studies of a wide variety of public health problems such as chronic, environmental, and occupational diseases, injuries, and reproductive health. Students work under the supervision of CDC epidemiologists and work on specific projects. Students are also exposed to day-to-day operations and a broad range of activities at CDC. Familiarity with computers and data analysis is helpful but not essential. Students are responsible for providing their own living and travel expenses.

**Special Circumstances:** Application period is open February 1st – April 1st for 2019-2020 rotations.

<https://www.cdc.gov/epielelective/>

Assessment:  Faculty/Resident Evaluation

Test/Quiz  Presentation

Other:

### ***Introduction to Rheumatology***

#### ***GMED 5078***

Category: Clinical

Classification: 1

Contact: Clerkship Coordinator, Regional  
Campus Coordinator

Eligible: All

Months Offered: all

**Course Description:** This rotation is designed primarily for 3<sup>rd</sup> year students as an introduction to musculoskeletal disorders and systemic inflammatory disease states in an ambulatory setting. Supervised by attending physicians, students will participate in primarily outpatient consultations, participate in teaching conferences, gain experience in pertinent diagnostic procedures, evaluate and follow patients in the faculty and fellow practices, and learn pathophysiology, differential diagnosis, clinical manifestations, management, and therapy of rheumatic diseases.

Assessment:  Faculty/Resident Evaluation

Test/Quiz  Presentation

Other:

### ***Palliative Care Externship***

#### ***GMED 5095***

Category: Clinical

Classification: 1

Contact: Clerkship Coordinator, Regional  
Campus Coordinator

Eligible: All

Months Offered: all

**Course Description:** Students will see patients in a hospice setting in the office as well as hospital consultations. Student will be able to participate in interdisciplinary team discussions about patient care.

Assessment:  Faculty/Resident Evaluation

Test/Quiz  Presentation

Other:

### ***Introduction to Outpatient Internal Medicine***

#### ***GMED 5096***

Category: Clinical

Classification: 1

Contact: Clerkship Coordinator, Regional  
Campus Coordinator

Eligible: All

Months Offered: all

**Course Description:** This rotation is designed to provide medical students with patient based, clinically oriented exposure to outpatient Internal Medicine. Interactions and learning opportunities will be conducted in the outpatient clinic setting primarily in the General Internal Medicine clinic with some exposure to other subspecialties.

Assessment:  Faculty/Resident Evaluation

Test/Quiz  Presentation

Other:

## **Miscellaneous Courses**

### **Medical Education**

#### **MEDI 5012**

Category: Teaching  
Classification: 1  
Contact: Dr. Anna Edmondson  
Eligible: All with faculty approval  
Months Offered: August through April

**Course Description:** The course provides students with a foundation in the principles of medical education. It allows students to tailor the experience to fit their chosen specialty and career path. It is composed of three different components: core medical education curriculum, teaching and scholarship. These components consist of both required offerings and voluntary sessions, which students will choose from in order to fulfill the requirements. Students will engage with material from relevant underlying “methods” disciplines from the learning sciences, including topics such as selection of research subjects, alignment of learning objectives with activities and assessments, active learner engagement, and so forth. The main clinical or science content will be selected by the student and the invited teaching faculty to be most relevant to the student’s chosen field.

Assessment:    Faculty/Resident Evaluation  
                   Test/Quiz    Presentation  
                   Other: Scholarly project; reflections

### **Point of Care Ultrasound**

#### **MEDI 5013**

Category: Teaching  
Classification: 1  
Contact: Dr. Becky Etheridge  
Eligible: 4<sup>th</sup> Year Only  
Months Offered: July through April

**Course Description:** The goals of this course are to promote Point-of-Care ultrasound technology as a clinical skills tool to enhance the educational experience of students with basic science content and to transform basic knowledge and student’s experience with ultrasound technology to enable readiness to incorporate Point-of-Care ultrasound into clinical practice. The course is designed to help students recall key information concerning introductory ultrasound topics including history of ultrasound technology, basic ultrasound physics principles, screen orientation, scan techniques, and machine knobology. Students will also learn to recognize common ultrasound applications and appropriate indications, pre-exam activities, patient preparations, and common scanning protocols and will demonstrate =introductory scanning skills through hands-on scanning labs.

Assessment:    Faculty/Resident Evaluation  
                   Test/Quiz    Presentation  
                   Other: Image interpretation, scanning

### **Simulation Education Elective**

#### **MEDI 6001**

Category: Teaching  
Classification: 1  
Contact: Dr. A.J. Kleinheksel  
Eligible: All  
Months Offered: September – November, February – April

**Course Description:** This elective is designed to develop the knowledge and skills of students with interests in academic medicine and educational research, as well as students who intend to apply for one of the medical simulation fellowships offered across the country. During the elective, students will learn about the theories supporting the use of simulation in education, apply best practices to the development of simulation cases, effectively use simulation technologies, and contribute to educational simulation scholarship

Assessment:    Faculty/Resident Evaluation  
                   Test/Quiz    Presentation  
                   Other:

## ***Neurology***

### ***Adult Neurology Sub-I***

#### ***NEUR 5001***

See Page 9 – Sub-I Listing

### ***Neurology Consult and Clinics Externship***

#### ***NEUR 5003***

Category: Clinical

Classification: 1

Contact: Clerkship Coordinator, Regional  
Campus Coordinator

Eligible: 3<sup>rd</sup> Year plus Clerkship

Months Offered: All

**Course Description:** This elective is designed to provide an introduction into decision making in Neurology. The student will attend Adult Neurology Clinics and participate in the direct evaluation of patients. There is ample opportunity to examine and evaluate patients with a wide range of neurological problems. A close working relationship with the neurology attending faculty will allow maximal learning potential.

Assessment:  Faculty/Resident Evaluation

Test/Quiz  Presentation

Other:

### ***Neurology Research***

#### ***NEUR 5006***

Category: Research

Classification: Research

Contact: Department Faculty, Clerkship Coordinator,  
Regional Campus Coordinator

Eligible: All

Months Offered: all

**Course Description:** This elective will allow the student an opportunity to concentrate on a specific area of Neurology. Clinical responsibility and/or research opportunities are available. In most instances, the specific program can be tailored to the interests and needs of the student. These electives must be arranged with the individual preceptor at least two months prior to the beginning of the rotation.

Assessment:  Faculty/Resident Evaluation

Test/Quiz  Presentation

Other:

### ***Neurology Off-Campus Externship***

#### ***NEUR 5008***

***This course requires application using VSAS or other arrangements made by the student.***

***Off-Campus Add Form Required***

Category: Clinical

Classification: Off Campus

Contact: Clerkship Coordinator

Eligible: 4<sup>th</sup> Year Only

Months Offered: All

**Course Description:** This elective is designed to provide students an opportunity to do an elective in Neurology at another residency program or institution.

Assessment:  Faculty/Resident Evaluation

Test/Quiz  Presentation

Other:

### ***Child Neurology Sub-I***

#### ***NEUR 5009***

See Page 9 – Sub-I Listing

### ***Neurology Critical Care***

#### ***NEUR 5010***

See Page 7 – Critical Care Listing

## Obstetrics and Gynecology

### **Obstetrics and Gynecology Off-Campus Externship OBGN 5001**

***This course requires application using VSAS or other arrangements made by the student.***

#### ***Off-Campus Add Form Required***

Category: Clinical  
Classification: Off Campus  
Contact: Clerkship Coordinator  
Eligible: 4<sup>th</sup> Year Only  
Months Offered: all

**Course Description:** The course is designed to give students the opportunity to participate in an OB/Gyn course at another residency or institution. Content can vary to fit each student's particular need and may be either clinically or research oriented.

Assessment:  Faculty/Resident Evaluation  
 Test/Quiz  Presentation  
 Other:

### **Maternal Fetal Medicine Externship OBGN 5005**

Category: Clinical  
Classification: 1  
Contact: Clerkship Coordinator, Regional  
Campus Coordinator  
Eligible: 3<sup>rd</sup> Year plus Clerkship  
Months Offered: all

**Course Description:** This is a clinically oriented block of time during which the student will participate in the antepartum, and outpatient care of high risk obstetric patients. Responsibilities are similar to those of a sub-intern working closely with the OB faculty and house-staff when house-staff are present. The student will also present cases at the clinical conferences dealing with high risk pregnancies, and be responsible for any assigned reading material. The student will make an in-depth presentation on topic to be determined at the beginning of the rotation.

Assessment:  Faculty/Resident Evaluation  
 Test/Quiz  Presentation  
 Other: Presentation

### **Reproductive Endocrinology Externship OBGN 5006**

Category: Clinical  
Classification: 1  
Contact: Clerkship Coordinator, Regional  
Campus Coordinator  
Eligible: 3<sup>rd</sup> Year plus Clerkship  
Months Offered: all (August – October may be restricted to OB declaring students)

**Course Description:** The student will participate in the Reproductive Endocrinology and Genetics Clinic. Students will be involved f day-to-day management of infertility in cycling patients including ultrasound, intrauterine insemination, in vitro fertilization, and reproductive preserving surgery. The student will see complex endocrine and genetics patients directly under faculty supervision, and will present patients at the weekly clinical conference. There will be also be exposure to the weekly research conference.

Assessment:  Faculty/Resident Evaluation  
 Test/Quiz  Presentation  
 Other: Presentation

### **Gynecologic Oncology Externship OBGN 5007**

Category: Clinical  
Classification: 1  
Contact: Clerkship Coordinator, Regional  
Campus Coordinator  
Eligible: 3<sup>rd</sup> Year plus Clerkship  
Months Offered: all (August – October may be restricted to OB declaring students)

**Course Description:** The student will participate in all aspects of gynecologic oncology within a high volume GYN ONC practice. Involvement includes participation in work up, treatment and follow-up with comprehensive care inclusive of associated physical and mental health issues. He/she will also be exposed to a high volume of surgery from routine hysterectomies to complex oncologic procedures like radical hysterectomies, bowel and urologic surgery, as well as minimal access surgery such as Da Vinci robotic surgery. The student will be instructed in the use of specialized instruments in female genital cancer, such as the LASER, LLETZ and the administration of chemotherapy.

Assessment:  Faculty/Resident Evaluation  
 Test/Quiz  Presentation  
 Other: Presentation



***Benign Gynecology Externship***

***OBGN 5008***

Category: Clinical

Classification: 1

Contact: Clerkship Coordinator, Regional  
Campus Coordinator

Eligible: 3<sup>rd</sup> Year plus Clerkship

Months Offered: All, (August – October may be restricted  
to OB declaring students)

Course Description: The student will participate in the expanded management of inpatient and outpatient gynecology patients. The student's outpatient experience will include exposure to patients with common problems, as well as routine preventative care. The outpatient experience will also include exposure to, ultrasound and colposcopy. The inpatient experience will consist of participation in the operating room, inpatients consults, and following assigned patients. Students will be responsible for their assigned patients.

Assessment:  Faculty/Resident Evaluation  
 Test/Quiz  Presentation  
 Other: Presentation

***Obstetrics and Gynecology Sub-I***

***OBGN 5009***

See Page 10 – Sub- I Listing

***Obstetrics and Gynecology Research***

***OBGN 5011***

Category: Research

Classification: Research

Contact: Department Faculty, Clerkship Coordinator,  
Regional Campus Coordinator

Eligible: 4<sup>th</sup> Year Only

Months Offered: all

Course Description: This elective is designed to offer the student an opportunity to do research under the supervision of a member of the faculty in the Department of Obstetrics and Gynecology.

Assessment:  Faculty/Resident Evaluation  
 Test/Quiz  Presentation  
 Other: Presentation

***Urogynecology Externship***

***OBGN 5012***

Category: Clinical

Classification: 1

Contact: Clerkship Coordinator, Regional  
Campus Coordinator

Eligible: 3<sup>rd</sup> Year plus Clerkship

Months Offered: all

Course Description: The student will participate in the management of inpatient and outpatient urogynecology patients. The outpatient experience will include extensive exposure to urodynamics, bladder ultrasound, and other diagnostic bladder tests. Students will participate in the office management of patients with all forms of incontinence, vaginal and uterine prolapse, and other gynecological problems. The inpatient experience will consist of participation in the operating room for urogynecology, advanced laparoscopy and robotic surgery. Students will follow assigned patients both preoperatively and postoperatively.

Assessment:  Faculty/Resident Evaluation  
 Test/Quiz  Presentation  
 Other: Presentation

***Gynecology Boot Camp***

***OBGN 5016***

Category: Residency Prep

Classification: 1

Contact: Clerkship Coordinator

Eligible: 4<sup>th</sup> Year Only AND declaring OB/Gyn as  
sponsoring department

Months Offered: March by special arrangement

Course Description: The student will complete workshops and exercises focused on skillsets that are important for an entry-level resident. During the course each student will follow a pregnant patient and participate in her delivery, and will participate in the preoperative workup, surgery, and postoperative care of a GYN surgical patient. The expectation will be that each student will be prepared with the knowledge and skills needed to handle the duties and responsibilities expected of an OB/GYN intern.

Assessment:  Faculty/Resident Evaluation  
 Test/Quiz  Presentation  
 Other: Presentation

## Ophthalmology

### **Ophthalmology Externship**

#### **OPTH 5001**

Category: Clinical

Classification: 1

Contact: Clerkship Coordinator, Regional  
Campus Coordinator

Eligible: All after completing Asepsis Training

Months Offered: all

Course Description: In order to develop basic understanding of ophthalmology disease processes and treatments, learn basic ophthalmology examination skills, and develop a differential diagnosis, given common presenting eye symptoms, students will observe and participate in a hospital based practice as well as observe ophthalmologic surgery.

Assessment:  Faculty/Resident Evaluation  
 Test/Quiz  Presentation  
 Other:

### **Ophthalmology Research**

#### **OPTH 5002**

Category: Research

Classification: Research

Contact: Department Faculty, Clerkship Coordinator,  
Regional Campus Coordinator

Eligible: All

Months Offered: all

Course Description: In order to develop clinical or basic science research skills and experience in ophthalmology, students will work with a faculty member on a research project of mutual interest. As a part of this course students will outline their research project with literature references and carry it out under supervision. A written report on the project is required at the end of the elective period.

Assessment:  Faculty/Resident Evaluation  
 Test/Quiz  Presentation  
 Other: Written Report of Research

### **Ophthalmology Off-Campus Externship**

#### **OPTH 5003**

***This course requires application using VSAS or other arrangements made by the student.***

***Off-Campus Add Form Required***

Category: Clinical

Classification: Off Campus

Contact: Clerkship Coordinator

Eligible: 4<sup>th</sup> Year Only

Months Offered: all

Course Description: This course is designed to provide exposure to clinical ophthalmology in another residency program or other institution.

Assessment:  Faculty/Resident Evaluation  
 Test/Quiz  Presentation  
 Other:



## **Pathology**

### ***Surgical Pathology Externship***

#### ***PATH 5003***

Category: Clinical

Classification: 1

Contact: Clerkship Coordinator, Regional  
Campus Coordinator

Eligible: All

Months Offered: all

**Course Description:** During this course students will participate in routine microscopic sign out with faculty members including biopsies and gross surgical specimens; review cases with pathologists at daily consensus meeting, interdepartmental tumor boards, departmental didactic conferences, and gross specimen and autopsy conferences; participate in the preparation of frozen section for immediate diagnosis during intraoperative consultations; and observe and participate in the performance of postmortem examinations. Locations currently used by this rotation include MCG as well as Savannah.

Assessment:  Faculty/Resident Evaluation  
 Test/Quiz  Presentation  
 Other:

### ***Clinical Pathology Externship***

#### ***PATH 5009***

Category: Clinical

Classification: 1

Contact: Clerkship Coordinator, Regional  
Campus Coordinator

Eligible: All

Months Offered: all

**Course Description:** During this four-week elective course, students will spend approximately one week in each area of Clinical Pathology to include Chemistry (under Dr. Singh), Microbiology (under Dr. McMullen), Hematology (under Dr. Savage), and Transfusion Medicine (under Drs. Bollag and Shikle). If so desired, additional time can be spent in any of the sub-disciplines, molecular pathology, anatomic pathology, etc. This can be arranged through Dr. Savage. The student will attend noon conferences, Monday Morning Conferences, observe bench work of technologists, review cases/participate in sign-out with the Section Director, and participate in other activities of each Section.

Assessment:  Faculty/Resident Evaluation  
 Test/Quiz  Presentation  
 Other:

### ***Neuropathology Externship***

#### ***PATH 5011***

Category: Clinical

Classification: 1

Contact: Clerkship Coordinator, Regional  
Campus Coordinator

Eligible: All

Months Offered: all

**Course Description:** During this course students will participate in routine microscopic sign out with faculty members including biopsies and gross surgical neuropathology specimens; learn the importance of frozen section for immediate diagnosis during intraoperative consultations; and participate in the brain cutting, didactic and case conferences, and neuro-oncology tumor board.

Assessment:  Faculty/Resident Evaluation  
 Test/Quiz  Presentation  
 Other:

### ***Pathology Off-Campus Externship***

#### ***PATH 5014***

***This course requires application using VSAS or other arrangements made by the student.***

***Off-Campus Add Form Required***

Category: Clinical

Classification: Off-Campus

Contact: Clerkship Coordinator

Eligible: 4<sup>th</sup> Year Only

Months Offered: all

**Course Description:** This course allows students to rotate in an off-campus lab or program.

Assessment:  Faculty/Resident Evaluation  
 Test/Quiz  Presentation  
 Other:

### ***Anatomic Pathology Externship***

#### ***PATH 5016***

Category: Clinical

Classification: 1

Contact: Clerkship Coordinator, Regional  
Campus Coordinator

Eligible: All

Months Offered: all

**Course Description:** During this course students will perform autopsy and find basic clinical pathologic correlations, participate in processing and examination of surgical pathology and cytology specimens, apply clinical interpretation and medical judgment in such examinations, and attend conferences and lectures.

Assessment:  Faculty/Resident Evaluation  
 Test/Quiz  Presentation  
 Other:

### ***Clinical Microbiology Externship***

#### ***PATH 5019***

Category: Clinical

Classification: 1

Contact: Clerkship Coordinator, Regional  
Campus Coordinator

Eligible: All

Months Offered: all

**Course Description:** During this course students will attend section conferences, observe the bench work of technologists, participate in daily Microbiology rounds, review charts, and meet with clinicians for patients with complex results.

Assessment:  Faculty/Resident Evaluation  
 Test/Quiz  Presentation  
 Other:

### ***Introduction to Pathology***

#### ***PATH 5028***

Category: Clinical

Classification: 1

Contact: Clerkship Coordinator, Regional  
Campus Coordinator

Eligible: All

Months Offered: all

**Course Description:** This course is designed to provide students with an opportunity to rotate through a busy pathology department and experience the full array of daily functions undertaken in such a department.

Assessment:  Faculty/Resident Evaluation  
 Test/Quiz  Presentation  
 Other:

## **Pediatrics**

### ***Neonatal Critical Care/Sub-I***

#### ***PEDS 5001***

See Page 7 – Critical Care Listing

See Page 10 – Sub-I Listing

### ***Pediatric Off-Campus Externship***

#### ***PEDS 5002***

***This course requires application using VSAS or other arrangements made by the student.***

***Off-Campus Add Form Required***

Category: Clinical

Classification: Off Campus

Contact: Clerkship Coordinator

Eligible: 4<sup>th</sup> Year Only

Months Offered: all

**Course Description:** This course is designed to provide the student with experience in pediatrics in an off campus setting through prior arrangement between the student and an off-campus pediatrician or program. The setting may be either inpatient or ambulatory based.

Assessment:  Faculty/Resident Evaluation

Test/Quiz  Presentation

Other:

### ***Pediatric Cardiology Externship***

#### ***PEDS 5005***

Category: Clinical

Classification: 1

Contact: Clerkship Coordinator, Regional  
Campus Coordinator

Eligible: 3<sup>rd</sup> Year plus Clerkship; NW campus students  
eligible after completion of 1<sup>st</sup> semester

Months Offered: all

**Course Description:** This rotation is designed to help students become proficient at performing a cardiovascular history and physical exam on pediatric patients. On the Augusta campus activities may include daily rounds in the PICU, the floor, and NICU as well as daily clinics. Opportunities arise almost daily for participating in cardiac catheterization, intraoperative transesophageal echo, and postoperative care on the Augusta campus. Observation of at least one surgical case is expected. Activities on other campuses will be primarily clinical with opportunities to participate in echo's and ECG's.

Assessment:  Faculty/Resident Evaluation

Test/Quiz  Presentation

Other:

### ***Allergy Immunology Externship***

#### ***PEDS 5006***

Category: Clinical

Classification: 1

Contact: Clerkship Coordinator, Regional  
Campus Coordinator

Eligible: 3<sup>rd</sup> Year plus Clerkship

Months Offered: all

**Course Description:** The rotation is designed to provide the student with experience in allergy and immunology primarily in an outpatient setting. Activities will include seeing patients of all ages in the allergy-immunology clinic and on the inpatient service under the direct supervision of the faculty.

Assessment:  Faculty/Resident Evaluation

Test/Quiz  Presentation

Other:

### ***Pediatric Research***

#### ***PEDS 5007***

Category: Research

Classification: 1

Contact: Department Faculty, Clerkship Coordinator,  
Regional Campus Coordinator

Eligible: All

Months Offered: all

**Course Description:** This course is designed to enable the student to participate in research experience in selected areas of pediatrics through special arrangement with a member of the pediatric faculty.

Assessment:  Faculty/Resident Evaluation

Test/Quiz  Presentation

Other:

### ***Pediatrics Sub-I***

#### ***PEDS 5009***

See Page 10 – Sub-I Listing

### ***Pediatric Gastroenterology Externship***

#### ***PEDS 5011***

Category: Clinical

Classification: 1

Contact: Clerkship Coordinator, Regional  
Campus Coordinator

Eligible: 3<sup>rd</sup> Year plus Clerkship

Months Offered: all

**Course Description:** This rotation is designed to provide the student with experience in pediatric gastroenterology. Activities will include evaluating outpatients in clinics and inpatient consults or newly admitted patients and observing GI procedures performed by attending throughout the month.

**Assessment:**  Faculty/Resident Evaluation

Test/Quiz  Presentation

Other:

### ***Pediatric Infectious Disease Externship***

#### ***PEDS 5013***

Category: Clinical

Classification: 1

Contact: Clerkship Coordinator, Regional  
Campus Coordinator

Eligible: 3<sup>rd</sup> Year plus Clerkship

Months Offered: all

**Course Description:** This rotation is designed to provide the student with experience in evaluating a child with a complex infectious disease and completing a pediatric consult to assist in the diagnosis and management of that child and to learn more about HIV exposure and disease in children. Students will participate in consults on pediatric in-patients, NICU, PICU, Nursery and Wards, outpatient clinics in Pediatrics ID, microbiology lab, rounds with Pediatrics ID attending regularly, and small group/lecture. Students will also give a 20 – 30 minute presentation on an ID topic of choice at end of rotation.

**Assessment:**  Faculty/Resident Evaluation

Test/Quiz  Presentation

Other:

### ***Newborn Nursery Externship***

#### ***PEDS 5014***

Category: Clinical

Classification: 1

Contact: Clerkship Coordinator, Regional  
Campus Coordinator

Eligible: 3<sup>rd</sup> Year plus Clerkship

Months Offered: all

**Course Description:** This rotation is designed to provide the student with experience evaluating well and sick neonates in the newborn nursery setting. The student will complete newborn histories and physical exams, spend time with a lactation consultant, present a teaching topic, and review and update a nursery protocol.

**Assessment:**  Faculty/Resident Evaluation

Test/Quiz  Presentation

Other:

### ***Pediatric Hematology/Oncology Externship***

#### ***PEDS 5017***

Category: Clinical

Classification: 1

Contact: Clerkship Coordinator, Regional  
Campus Coordinator

Eligible: 3<sup>rd</sup> Year plus Clerkship

Months Offered: all

**Course Description:** This rotation is designed to familiarize student with the needs of chronically ill oncology and hematology patients and multidisciplinary approach needed to care for them. Students will participate in inpatient and outpatient experiences including following specific patients, and reviewing peripheral blood smears and bone marrows will be arranged with the attending physician and pathologist. In addition students will be asked to present a topic of choice.

**Assessment:**  Faculty/Resident Evaluation

Test/Quiz  Presentation

Other:

### ***Pediatric Critical Care***

#### ***PEDS 5018***

See Page 8 – Critical Care Listing

### ***Pediatric Endocrinology Externship***

#### ***PEDS 5020***

Category: Clinical

Classification: 1

Contact: Clerkship Coordinator, Regional  
Campus Coordinator

Eligible: 3<sup>rd</sup> Year plus Clerkship

Months Offered: All

**Course Description:** This elective is designed to familiarize the student with normal variations in pre-pubertal and pubertal growth patterns, the diagnostic approach to pediatric endocrine conditions and the ongoing management of the conditions. The weekly Pediatric Diabetes Clinics offer the student the opportunity to become familiar with the multidisciplinary approach to a chronic condition. In addition, there will be a discussion of a chosen topic each week. Clinical research projects can also be arranged.

**Assessment:**  Faculty/Resident Evaluation

Test/Quiz  Presentation

Other:

### ***Pediatric Pulmonology Externship***

#### ***PEDS 5022***

Category: Clinical

Classification: 1

Contact: Clerkship Coordinator, Regional  
Campus Coordinator

Eligible: 3<sup>rd</sup> Year plus Clerkship

Months Offered: All

**Course Description:** This rotation is designed provide the student with an intensive exposure to Pediatric Pulmonology patients through a combination of outpatient encounters and inpatient consults plus didactic sessions. The student will attend all pediatric pulmonology clinics, will participate in inpatient consults and weekly multidisciplinary rounds with the hospitalist team, will attend conferences and lectures as pertinent to pulmonology, will complete a portfolio provided to them at the beginning of the rotation, and will present a short educational session at the end of the rotation.

Assessment:  Faculty/Resident Evaluation  
 Test/Quiz  Presentation  
 Other: Portfolio

### ***Pediatric Assistantship at Special Needs***

#### ***Summer Camp***

#### ***PEDS 5035***

Category: Clinical

Classification: 1

Contact: Clerkship Coordinator

Eligible: 3<sup>rd</sup> Year plus Clerkship

Months Offered: All

**Course Description:** This unique elective allows the student to participate as part of the medical team each week in a camp setting with various medical conditions such as brain injury, chronic renal disease/solid organ transplant, hereditary bleeding disorders, cancer, asthma, emotional abuse, and congenital neuromuscular disorders. Activities include supervised patient evaluations with medical team members in the medical lodge and possibly during camp activities; observation, mentorship and supervised participation in care and maintenance of the campers; observation and occasionally participation in camp activities with campers; and mentorship and small group sessions with individual medical team members during each camp.

**Special Circumstances:** Arrangements should be made by contacting Dr. Dan Mathews, Director of Camping Services – Camp Twin Lakes - 706-557-9070 ext. 403, E-mail [dan@camptwinlakes.org](mailto:dan@camptwinlakes.org), mailing address: Camp Twin Lakes, 1391 Keensheefoonee Road, Rutledge Georgia 30663.

Assessment:  Faculty/Resident Evaluation  
 Test/Quiz  Presentation  
 Other

### ***Pediatrics Sub-specialties Externship***

#### ***PEDS 5036***

Category: Clinical

Classification: 1

Contact: Clerkship Coordinator, Regional  
Campus Coordinator

Eligible: 3<sup>rd</sup> Year plus Clerkship

Months Offered: All

**Course Description:** This rotation is designed to allow students to gain experience with the acute and chronic diseases associated with two different pediatric subspecialties. Activities include participation in outpatient subspecialty clinics, consults on pediatric inpatient, NICU, PICU, Nursery and Wards, reading about specific patients and about relevant subspecialty topics, and attending conferences and lectures as pertinent to the subspecialty. Permission from both subspecialties is required.

Assessment:  Faculty/Resident Evaluation  
 Test/Quiz  Presentation  
 Other

### ***Advanced Pediatrics***

#### ***PEDS 5037***

Category: Residency Prep

Classification: 1

Contact: Clerkship Coordinator

Eligible: 4<sup>th</sup> Year Only and declaring Pediatrics as a sponsoring department

Months Offered: August

**Course Description:** The AP program will be comprised of a 4-week elective in August which will consist of required small group sessions during the 1st and 4th weeks and independent work during the 2nd and 3rd weeks. Activities include small-group discussions, simulations, and individual projects. There are no direct patient care experiences.

Assessment:  Faculty/Resident Evaluation  
 Test/Quiz  Presentation  
 Other

## ***Spirituality and Medicine***

### ***PEDS 5038***

Category: Reading

Classification: 2

Contact: Clerkship Coordinator

Eligible: All

Months Offered: September - June

**Course Description:** The student will research in depth a topic of his/her choice and will prepare a paper for presentation/publication. Optionally, the student may participate in clinical rounds and other activities in the Department of Pastoral Care. The experience will primarily be independent study and may be partially off campus. The student will meet regularly with faculty for discussion and evaluation of his/her progress.

**Assessment:**     Faculty/Resident Evaluation

Test/Quiz     Presentation

Other

## **Pharmacology and Toxicology**

### **Pharmacology Tutorial**

#### **PHRM 5003**

Category: Reading

Classification: 2

Contact: Clerkship Coordinator, Regional  
Campus Coordinator

Eligible: All

Months Offered: by arrangement

**Course Description:** Students may elect to study in depth a specific area in Pharmacology and Toxicology under the guidance of one or more faculty members most familiar with that specific area in order to expand their knowledge and understanding of selected areas of pharmacology and therapeutics.

Assessment:  Faculty/Resident Evaluation  
 Test/Quiz  Presentation  
 Other:

### **Pharmacology Research**

#### **PHRM 5004**

Category: Research

Classification: Research

Contact: Department Faculty, Clerkship Coordinator,  
Regional Campus Coordinator

Eligible: All with faculty approval

Months Offered: by arrangement

**Course Description:** This course is designed to offer students the opportunity to participate in research programs being conducted by members of the faculty of the Department of Pharmacology and Toxicology.

Assessment:  Faculty/Resident Evaluation  
 Test/Quiz  Presentation  
 Other:

### **Clinical Pharmacology Tutorial**

#### **PHRM 5012**

Category: Reading

Classification: 2

Contact: Clerkship Coordinator, Regional  
Campus Coordinator

Eligible: All

Months Offered: all Minimum Enrollment: 3

**Course Description:** Students will interact with a faculty of pharmacologists, clinical pharmacologists and pharmacists, students will study rational approaches to drug therapy. Readings, discussions, case histories and clinic visits will be utilized. An additional goal of this course is for students to understand the process for clinical development of new drugs.

Assessment:  Faculty/Resident Evaluation  
 Test/Quiz  Presentation  
 Other:

### **Critical Care Pharmacology Tutorial**

#### **PHRM 5015**

Category: Reading

Classification: 2

Contact: Clerkship Coordinator, Regional  
Campus Coordinator

Eligible: All

Months Offered: by arrangement Minimum Enrollment: 2  
Note: this course is currently offered on the Southwest campus only

**Course Description:** Interacting with college of pharmacy faculty, clinical staff pharmacists, physicians, mid-level providers, nurses, respiratory therapists, clinical dietitians, and pharmacy students, the student will study rational and evidence based approaches to drug therapy. Readings, discussions, and case presentations will be utilized. Topics to be covered include but are not limited to pharmacologic prevention of stress-related gastric mucosal injury and venous thromboembolism, management of pain, agitation, and delirium, various forms of hemodynamic monitoring, fluids and vasoactive agents, nutrition in critical illness, and acute kidney injury and considerations for drug dosing in continuous renal replacement therapy. Opportunities may exist to facilitate or provide lecture in a didactic setting to third year pharmacy students.

Assessment:  Faculty/Resident Evaluation  
 Test/Quiz  Presentation  
 Other:

## **Physiology**

### ***Physiology Research***

#### ***PSIO 5011***

Category: Research

Classification: 2

Contact: Department Faculty

Eligible: All with faculty approval

Months Offered: all

**Course Description:** This course is designed to introduce medical students to physiological research.

**Assessment:**     Faculty/Resident Evaluation

Test/Quiz     Presentation

Other:



## Psychiatry

### **Consult-Liaison Psychiatry Externship**

#### **PSRY 5002**

Category: Clinical

Classification: 1

Contact: Clerkship Coordinator, Regional  
Campus Coordinator

Eligible: 3<sup>rd</sup> Year plus Clerkship

Months Offered: all

**Course Description:** During this course students will see consultation cases from various departments, review chart work, and discuss cases during rounds with the consult physicians. This course is designed to give students the opportunity to learn directly about the medicine/psychiatry interface.

Assessment:  Faculty/Resident Evaluation  
 Test/Quiz  Presentation  
 Other:

### **Psychiatry Off-Campus Externship**

#### **PSRY 5005**

***This course requires application using VSAS or other arrangements made by the student.***

***Off-Campus Add Form Required***

Category: Clinical

Classification: Off-Campus

Contact: Clerkship Coordinator, Regional  
Campus Coordinator

Eligible: 4<sup>th</sup> Year Only

Months Offered: all

**Course Description:** This course is designed to provide students the opportunity to work in rotations at other institutions or with individual psychiatrists.

Assessment:  Faculty/Resident Evaluation  
 Test/Quiz  Presentation  
 Other:

### **Eating Disorders Externship**

#### **PSRY 5007**

Category: Clinical

Classification: 1

Contact: Clerkship Coordinator, Regional  
Campus Coordinator

Eligible: 3<sup>rd</sup> Year plus Clerkship

Months Offered: all

**Course Description:** During this course students will observe and participate in initial assessments and evaluations of patients with eating disorders and individual and group psychotherapy, as well as psychopharmacological management and medical assessment and treatment of inpatients with eating disorders.

Assessment:  Faculty/Resident Evaluation  
 Test/Quiz  Presentation  
 Other:

### **Child & Adolescent Psychiatry Externship**

#### **PSRY 5023**

Category: Clinical

Classification: 1

Contact: Clerkship Coordinator, Regional  
Campus Coordinator

Eligible: 3<sup>rd</sup> Year plus Clerkship

Months Offered: all

**Course Description:** Students will participate as a member of a multidisciplinary treatment team in the evaluation and care of children with severe behavioral and emotional problems, be involved in individual, family, and group treatment modalities, didactic presentations on topics in child psychiatry, and participate in clinic to appreciate outpatient care and maintenance of treatment for less severe emotional and behavioral disturbance

Assessment:  Faculty/Resident Evaluation  
 Test/Quiz  Presentation  
 Other:

***Psychiatric and Psychosocial Issues of HIV/AIDS***

***PSRY 5028***

Category: Clinical  
Classification: 1  
Contact: Clerkship Coordinator, Regional Campus Coordinator  
Eligible: 3<sup>rd</sup> Year plus Clerkship  
Months Offered: all

**Course Description:** During this course students will participate in the treatment of individuals infected with and affected by HIV/AIDS through assessment, individual and family therapy, and psychological consultation in several HIV/AIDS treatment environments

Assessment:  Faculty/Resident Evaluation  
 Test/Quiz  Presentation  
 Other:

***Molecular Neurobiology of Treatment Outcome of Schizophrenia***

***PSRY 5029***

Category: Research  
Classification: Research  
Contact: Clerkship Coordinator  
Eligible: 3<sup>rd</sup> Year plus Clerkship  
Months Offered: all

**Course Description:** During this course students will participate in training in all aspects of laboratory analysis and observation of clinical assessments in patients in order to study the molecular and cellular markers in peripheral as well as postmortem brain samples from subjects with schizophrenia, bipolar disorder, autism or suicide victims.

Assessment:  Faculty/Resident Evaluation  
 Test/Quiz  Presentation  
 Other:

***Psychiatry Research***

***PSRY 5040***

Category: Research  
Classification: Research  
Contact: Department Faculty, Clerkship Coordinator, Regional Campus Coordinator  
Eligible: 3<sup>rd</sup> Year plus Clerkship  
Months Offered: all

**Course Description:** During this course students will review current literature, summarizing it as appropriate for departmental journal club, case conference or any other appropriate venue, develop and work on a portion of or a full independent research project under the supervision of a faculty mentor.

Assessment:  Faculty/Resident Evaluation  
 Test/Quiz  Presentation  
 Other: Literature Summary

***Addiction Psychiatry Externship***

***PSRY 5041***

Category: Clinical  
Classification: 1  
Contact: Clerkship Coordinator, Regional Campus Coordinator  
Eligible: 3<sup>rd</sup> Year plus Clerkship  
Months Offered: all

**Course Description:** During this course students will observe patient evaluations and treatment plan formation and psychopharmacology, milieu, group and support psychotherapy modality as well as learn about the 12-step treatment approach.

Assessment:  Faculty/Resident Evaluation  
 Test/Quiz  Presentation  
 Other:

***Emergency Psychiatry Externship***

***PSRY 5043***

Category: Clinical  
Classification: 1  
Contact: Clerkship Coordinator, Regional Campus Coordinator  
Eligible: 3<sup>rd</sup> Year plus Clerkship  
Months Offered: all

**Course Description:** During this course students will observe and participate in patient evaluation, verbal and written patient case presentation including documentation in medical records, and psychotherapy techniques frequently used in emergencies: supportive, de-briefing, etc. The course is designed to introduce the medical student to the fundamentals of emergency psychiatry.

Assessment:  Faculty/Resident Evaluation  
 Test/Quiz  Presentation  
 Other:

***Neurostimulation Externship***

***PSRY 5044***

Category: Clinical  
Classification: 1  
Contact: Clerkship Coordinator, Regional Campus Coordinator  
Eligible: 3<sup>rd</sup> Year plus Clerkship  
Months Offered: all

**Course Description:** Students are expected to attend all ECT sessions during the rotation. Students will also participate in clinic, and will assist with ECT and TMS consultations, procedures, aftercare management, verification and authorization as necessary.

Assessment:  Faculty/Resident Evaluation  
 Test/Quiz  Presentation  
 Other:

### ***Advanced Psychiatry Externship***

#### ***PSRY 5045***

Category: Clinical

Classification: 1

Contact: Clerkship Coordinator, Regional  
Campus Coordinator

Eligible: 3<sup>rd</sup> Year plus Clerkship

Months Offered: all

**Course Description:** This course is designed for students interested in Psychiatry to prepare them for internship. During the rotation, students will collaborate as a member of an interprofessional team and demonstrate ability to act as primary clinician for patients under attending supervision. They will be expected to demonstrate proficiency in conducting initial assessments and evaluations and to distinguish appropriate psychopharmacological, somatic treatments, and psychotherapy for psychiatric disorders

Assessment:  Faculty/Resident Evaluation

Test/Quiz  Presentation

Other:

### ***Mood Disorders Externship***

#### ***PSRY 5046***

Category: Clinical

Classification: 1

Contact: Clerkship Coordinator, Regional  
Campus Coordinator

Eligible: 3<sup>rd</sup> Year plus Clerkship

Months Offered: all

**Course Description:** Students will observe and participate in initial assessments and evaluations, perform psychopharmacological management and medical assessment and treatment, direct patient care, participate in team meetings and group therapy, and attend associated didactic learning activities.

Assessment:  Faculty/Resident Evaluation

Test/Quiz  Presentation

Other:

## **Radiation Oncology**

### ***Radiation Therapy Externship***

#### ***RONC 5006***

Category: Clinical

Classification: 1

Contact: Clerkship Coordinator, Regional  
Campus Coordinator

Eligible: 4<sup>th</sup> Year Only

Months Offered: all

**Course Description:** The student will participate in tumor conferences at the various hospitals and also attend the radiation therapy cancer clinics in order to gain experience in the workup and general management of the cancer patient in the areas of curative therapy, palliation, and supportive care. The student will be afforded an opportunity to see a large variety of tumors treated with various modalities of radiation therapy.

Assessment:  Faculty/Resident Evaluation

Test/Quiz  Presentation

Other:

### ***Radiation Therapy Off-Campus Externship***

#### ***RONC 5008***

***This course requires application using VSAS or other arrangements made by the student.***

***Off-Campus Add Form Required***

Category: Clinical

Classification: Off Campus

Contact: Clerkship Coordinator

Eligible: 4<sup>th</sup> Year Only

Months Offered: all

**Course Description:** This elective is designed for the student who is considering pursuit of a radiation oncology residency and who would like to obtain additional and varied experiences in the field.

Assessment:  Faculty/Resident Evaluation

Test/Quiz  Presentation

Other:

## **Radiology**

### ***Radiology Externship***

#### ***RADM 5001***

Category: Clinical

Classification: 1

Contact: Clerkship Coordinator, Regional  
Campus Coordinator

Eligible: All

Months Offered: all

**Course Description:** Students rotate through most of the major areas of radiology, participating in the clinical diagnostic process. In addition to clinical rotations, lectures and case conferences are scheduled throughout the rotation. The student will learn appropriate ordering of radiology studies, radiation safety, and to recognize certain basic radiographic signs and patterns; however, it is not intended that students will be able to “read” a radiograph at the end of the elective.

Assessment:  Faculty/Resident Evaluation

Test/Quiz  Presentation

Other:

### ***Pediatric Radiology Externship***

#### ***RADM 5003***

Category: Clinical

Classification: 1

Contact: Clerkship Coordinator, Regional  
Campus Coordinator

Eligible: All

Months Offered: all

**Course Description:** This course is designed for students who have an interest in Diagnostic Radiology, Pediatrics, or Family Medicine. The four-week rotation will include exposure to radiography, fluoroscopy, CT, ultrasound, and MRI of the pediatric patient. The student will primarily spend time in the diagnostic reading area interpreting images with the pediatric radiologists along with some didactic lectures. The student will learn appropriate ordering of radiology studies, radiation safety, and to recognize certain basic radiographic signs and patterns; however, it is not intended that students will be able to “read” a radiograph at the end of the elective.

Assessment:  Faculty/Resident Evaluation

Test/Quiz  Presentation

Other:

### ***Advanced Diagnostic Radiology Externship***

#### ***RADM 5004***

Category: Clinical

Classification: 1

Contact: Clerkship Coordinator, Regional  
Campus Coordinator

Eligible: 3<sup>rd</sup> & 4<sup>th</sup> Year Students (RADM 5001 is a prerequisite if the student has declared diagnostic radiology)

Months Offered: all

**Course Description:** This course is designed for students who have an interest in Diagnostic Radiology or specialties that would benefit from a more specialized focus in radiology such as Neurology, Neurosurgery, General Surgery, and Orthopedics. The student chooses from Neuroradiology, Musculoskeletal Radiology, and Abdominal Imaging as their focus for this four-week elective with exposure to multiple modalities of diagnostic imaging in these subspecialties.

Assessment:  Faculty/Resident Evaluation

Test/Quiz  Presentation

Other:

### ***Radiology Off-Campus Externship***

#### ***RADM 5005***

***This course requires application using VSAS or other arrangements made by the student.***

***Off-Campus Add Form Required***

Category: Clinical

Classification: Off Campus

Contact: Clerkship Coordinator, Regional  
Campus Coordinator

Eligible: 4<sup>th</sup> Year Only

Months Offered: all

**Course Description:** This elective is designed for the student who is considering pursuit of a Radiology residency and who would like to obtain additional and varied experiences in the field.

Assessment:  Faculty/Resident Evaluation

Test/Quiz  Presentation

Other:

***Vascular/Interventional Radiology Externship  
RADM 5007***

Category: Clinical  
Classification: 1  
Contact: Clerkship Coordinator, Regional  
Campus Coordinator  
Eligible: 3<sup>rd</sup> & 4<sup>th</sup> Year Students (RADM 5001 is a  
prerequisite if the student has declared  
diagnostic radiology)  
Months Offered: all

**Course Description:** The student will work with interventional radiologists in the performance of vascular and interventional procedures. Sufficient time will be allowed for studying the teaching file and participating in similar learning activities. Students will assist with patient preparation and monitoring, write clinical workups, observe procedures, and assist in preparation for case conferences.

Assessment:  Faculty/Resident Evaluation  
 Test/Quiz  Presentation  
 Other:

***Radiology Research  
RADM 5013***

Category: Research  
Classification: Research  
Contact: Department Faculty, Clerkship Coordinator,  
Regional Campus Coordinator  
Eligible: All  
Months Offered: all

**Course Description:** The student will participate in writing a short research proposal relevant to a project in the PI's lab. The student will gain knowledge of the literature of the field, will obtain training and experience in appropriate laboratory methods, analysis and critical interpretation of experimental data; will participate/attend journal clubs, lab meetings, and departmental seminars as deemed appropriate by the PI.

Assessment:  Faculty/Resident Evaluation  
 Test/Quiz  Presentation  
 Other: written summary

***Introduction to Clinical Ultrasound  
RADM 5015***

Category: Clinical  
Classification: 1  
Contact: Clerkship Coordinator, Regional  
Campus Coordinator  
Eligible: All  
Months Offered: all  
Note: This course is currently offered only on the Athens campus

**Course Description:** This course is designed is to promote ultrasound technology as a clinical skills tool and to enable readiness to incorporate US skills into clinical practice. It may include lectures, hands-on ultrasound scanning, formative and summative assessment, and independent study.

Assessment:  Faculty/Resident Evaluation  
 Test/Quiz  Presentation  
 Other:

## **Surgery (General)**

### **General Surgery Research SURG 5002**

***This Course Requires a Surgery Research Form to accompany the MCG Add Course Form. Please see curriculum webpage -***

***<https://www.augusta.edu/mcg/coffice/phase3.php>***

Category: Research

Classification: Research

Contact: Department Faculty, Clerkship Coordinator,  
Regional Campus Coordinator

Eligible: All

Months Offered: all

**Course Description:** This course is designed to help students gain increased knowledge and skill, in the field of surgical research. Students will study in depth a surgical topic of interest under the supervision of a faculty member familiar with that topic. The student will also prepare an acceptable thesis/report on his/her chosen topic. All IRB projects must be approved ahead of time. Please note that approval can take 90 days.

Assessment:  Faculty/Resident Evaluation

Test/Quiz  Presentation

Other:

### **General Surgery Externship SURG 5003**

Category: Clinical

Classification: 1

Contact: Clerkship Coordinator, Regional Campus  
Coordinator

Eligible: 4<sup>th</sup> Year Only

Months Offered: all

**Course Description:** During this course students will participate in all activities of the preceptor's practice including exposure to outpatients, inpatients and procedures. The course is designed to increase a student's knowledge and skills in the field of General Surgery and in the care of surgical patients. Note that this course does not meet the requirements of the Sub-I.

Assessment:  Faculty/Resident Evaluation

Test/Quiz  Presentation

Other:

### **General Surgery Off-Campus Externship SURG 5004**

***This course requires application using VSAS or other arrangements made by the student.***

***Off-Campus Add Form Required***

Category: Clinical

Classification: Off-Campus

Contact: Clerkship Coordinator

Eligible: 4<sup>th</sup> Year Only

Months Offered: all

**Course Description:** This course is designed for students to participate in a rotation in General Surgery at another medical school or institution.

Assessment:  Faculty/Resident Evaluation

Test/Quiz  Presentation

Other:

### **Surgery Critical Care/Trauma SURG 5005**

See Page 7 – Critical Care Listing

### **Surgery Sub-I SURG 5007**

See Page 10 – Sub-I Listing

### **History of Medicine SURG 5015**

***This course does NOT count toward the on-campus graduation requirement.***

Category: Reading

Classification: 2

Contact: Clerkship Coordinator, Regional Campus  
Coordinator

Eligible: All

Months Offered: all

**Course Description:** Students will meet with the course director prior to the elective to discuss a topic of interest which will then be researched and presented in the form of a research paper. In addition, students will review a general medical history text and submit a written summary and questions based on the text. After the initial meeting, the activity will otherwise be an independent study which may be done off campus.

Assessment:  Faculty/Resident Evaluation

Test/Quiz  Presentation

Other: Research Paper

***Surgery Sub-I for Military Students***

***SURG 5016***

See Page 10 – Sub-I Listing

***Surgery Boot Camp***

***SURG 5380***

Category: Residency Prep

Classification: 1

Contact: Clerkship Coordinator

Eligible: 4<sup>th</sup> Year Only and declaring Surgery as a  
sponsoring department

Months Offered: March

Course Description: This elective has been specifically designed for students entering a surgical residency. The aim is to prepare the student with the basic surgical skills and knowledge necessary to successfully begin their PGY 1 year in surgical training. Activities that are part of this course include surgical basic skills simulation training, endoscopic skills simulation training, laparoscopic skills training, attendance at surgical conferences, presentation at tumor board, minor OR procedures, and practice on-call telephone calls.

Assessment:  Faculty/Resident Evaluation

Test/Quiz  Presentation

Other:



## Neurosurgery

### **Neurosurgery Externship**

#### **SURG 5200**

Category: Clinical

Classification: 1

Contact: Clerkship Coordinator, Regional  
Campus Coordinator

Eligible: 4<sup>th</sup> Year Only

Months Offered: all

**Course Description:** This course provides opportunity for combining the direct patient care responsibilities of a junior house officer with practice in performing neurological examinations while participating with staff members in the practice of neurosurgery. The extern will be assigned eight patients for whom he will have primary responsibility for daily care under the supervision of the Neurosurgery faculty and house staff in locations where house staff are present. He/she will participate in patient evaluations in the clinic and daily teaching conferences. This elective provides for a close working relationship between the staff and the student while at the same time providing opportunity for patient care responsibilities. Note that this course does not meet the requirements of the Sub-I. Students wishing to take a Sub-I in Neurosurgery should use the SURG 5007 course with a focus in Neurosurgery.

Assessment:  Faculty/Resident Evaluation

Test/Quiz  Presentation

Other:

### **Neurosurgery Off-Campus Externship**

#### **SURG 5202**

***This course requires application using VSAS or other arrangements made by the student.***

***Off-Campus Add Form Required***

Category: Clinical

Classification: Off Campus

Contact: Clerkship Coordinator

Eligible: 4<sup>th</sup> Year Only

Months Offered: all

**Course Description:** This elective provides an opportunity for students who wish to study neurosurgery at another institution.

Assessment:  Faculty/Resident Evaluation

Test/Quiz  Presentation

Other:

### **Neurosurgery Externship and Research**

#### **SURG 5203**

Category: Clinical

Classification: 1

Contact: Department Faculty, Clerkship Coordinator,  
Regional Campus Coordinator

Eligible: 4<sup>th</sup> Year Only

Months Offered: all

**Course Description:** This experience provides opportunity for direct patient care responsibilities of a junior house officer with practice in performing neurological examinations and participating in neurosurgical therapy and simultaneously becoming involved in a limited neurosurgical clinical research experience. The research project may be initiated by the student or he/she may elect to participate in an ongoing research project with one of the faculty members. The patient care responsibilities will be limited to five or six patients. This elective will necessarily be arranged on an individual basis with the particular faculty member with whom the student wishes to perform the research in order to assure facilities. All IRB projects must be approved ahead of time. Please note that approval can take 90 days.

Assessment:  Faculty/Resident Evaluation

Test/Quiz  Presentation

Other:

### **Pediatric Neurosurgery Externship**

#### **SURG 5205**

Category: Clinical

Classification: 1

Contact: Clerkship Coordinator, Regional  
Campus Coordinator

Eligible: 4<sup>th</sup> Year Only

Months Offered: all

**Course Description:** Pediatric Neurosurgery focuses on the management of developing nervous system. This elective will encompass inpatient and outpatient care of these children. The student will participate in daily ward rounds, diagnostic and treatment planning, surgery and outpatient evaluation under the supervision of Neurosurgery faculty and house staff in locations where house staff are present. The emphasis of the clerkship will be on the unique nature of children's neurosurgical problems, as well as on the management of these problems, both through surgery and the interactions with other medical and surgical pediatric specialist such as Neonatology, Neurology, Oncology and Intensive Care.

Assessment:  Faculty/Resident Evaluation

Test/Quiz  Presentation

Other:

## Orthopedics

### **Orthopedics Externship**

#### **SURG 5275**

Category: Clinical

Classification: 1

Contact: Clerkship Coordinator, Regional  
Campus Coordinator

Eligible: 4<sup>th</sup> Year Only

Months Offered: all

**Course Description:** In order to gain increased knowledge and skills in the field of Orthopedic Surgery and in the care of Orthopedics patients, students will fully participate in all inpatient and outpatient activities of their assigned service. Note that this course does not meet the requirements of the Sub-I. Students wishing to take a Sub-I in Orthopedics should use the SURG 5007 course with a focus in Orthopedics.

Assessment:  Faculty/Resident Evaluation

Test/Quiz  Presentation

Other:

### **Orthopedics Off-Campus Externship**

#### **SURG 5278**

***This course requires application using VSAS or other arrangements made by the student.***

***Off-Campus Add Form Required***

Category: Clinical

Classification: 1

Contact: Clerkship Coordinator

Eligible: 4<sup>th</sup> Year Only

Months Offered: all

**Course Description:** This course is designed to give students exposure to rotations in Orthopedics offered at other residency programs or institutions.

Assessment:  Faculty/Resident Evaluation

Test/Quiz  Presentation

Other:

### **Orthopedics Research**

#### **SURG 5292**

***This Course Requires a Surgery Research Form to accompany the MCG Add Course Form. Please see curriculum webpage -***

***<https://www.augusta.edu/mcg/coffice/phase3.php>***

Category: Research

Classification: Research

Contact: Department Faculty, Clerkship Coordinator,  
Regional Campus Coordinator

Eligible: All

Months Offered: all

**Course Description:** Students will work with a faculty supervisor on a project of mutual interest in order to give the student increased knowledge, skill and appreciation in the field of surgical research. All IRB projects must be approved ahead of time. Please note that approval can take 90 days.

Assessment:  Faculty/Resident Evaluation

Test/Quiz  Presentation

Other:

## Otolaryngology

### **Otolaryngology Off-Campus Externship**

#### **SURG 5252**

***This course requires application using VSAS or other arrangements made by the student.***

***Off-Campus Add Form Required***

Category: Clinical  
Classification: Off Campus  
Contact: Clerkship Coordinator  
Eligible: 4<sup>th</sup> Year Only  
Months Offered: all

**Course Description:** Specific course requirements and descriptions will vary depending on the institution. Courses should cover a variety of topics and patient experiences related to the specialty of Otolaryngology. For help in making arrangements, interested students should contact the Department of Otolaryngology at MCG.

Assessment:     Faculty/Resident Evaluation  
                   Test/Quiz     Presentation  
                   Other:

### **Otolaryngology Externship**

#### **SURG 5254**

Category: Clinical  
Classification: 1  
Contact: Clerkship Coordinator, Regional Campus  
                  Coordinator  
Eligible: 3<sup>rd</sup> Year plus Clerkship  
Months Offered: all

**Course Description:** This course is designed to familiarize the student with the diseases of the ears, nose and throat with emphasis on diagnostic techniques, including physical examination techniques, radiology, audiometrics and endoscopic procedures. The student will be introduced to the principles of head and neck surgery, facial plastic surgery, endoscopy and neurotology. The utilization of the office and hospital patients will allow the student to participate in and observe the specialty of Otolaryngology. Note that this course does not meet the requirements of the Sub-I. Students wishing to take a Sub-I in ENT should use the SURG 5007 course with a focus in ENT.

Assessment:     Faculty/Resident Evaluation  
                   Test/Quiz     Presentation  
                   Other:

## **Pediatric Surgery**

### **Pediatric Surgery Externship**

#### **SURG 5300**

Category: Clinical

Classification: 1

Contact: Clerkship Coordinator, Regional  
Campus Coordinator

Eligible: 3<sup>rd</sup> Year plus Clerkship

Months Offered: all

**Course Description:** This Pediatric Surgery Elective is designed to introduce the student to the fundamentals involved in the Clinical Care of the Pediatric Surgical patient. Participation as above in all activities of the Pediatric Surgical Service. Note that this course does not meet the requirements of the Sub-I. Students wishing to take a Sub-I in Pediatric Surgery should use the SURG 5007 course with a focus in Pediatric Surgery.

Assessment:  Faculty/Resident Evaluation

Test/Quiz  Presentation

Other:

## **Plastic Surgery**

### **Plastic Reconstructive Surgery Externship**

#### **SURG 5375**

Category: Clinical

Classification: 1

Contact: Clerkship Coordinator, Regional  
Campus Coordinator

Eligible: 3<sup>rd</sup> Year plus Clerkship

Months Offered: all

**Course Description:** In order to gain increased knowledge and skills in the field of Plastic Surgery and in the care of Plastic Surgery patients, students will participate in all activities of the Plastic Surgical Service. This may include exposure to wound healing problems, repair of nerves, tendons, vessels, bone and clinical problems including tumors of the head and neck, injuries of the face and extremities, thermal burns, and congenital abnormalities. Note that this course does not meet the requirements of the Sub-I. Students wishing to take a Sub-I in Plastic Surgery should use the SURG 5007 course with a focus in Plastic Surgery.

Assessment:  Faculty/Resident Evaluation

Test/Quiz  Presentation

Other:

## **Thoracic and Cardiac Surgery**

### **Thoracic and Cardiac Surgery Externship**

#### **SURG 5325**

Category: Clinical

Classification: 1

Contact: Clerkship Coordinator, Regional  
Campus Coordinator

Eligible: 4<sup>th</sup> Year Only

Months Offered: all

**Course Description:** This elective is designed to provide additional experience in pathophysiology and treatment in cardiothoracic disease. The student participates with the cardiothoracic surgeon in answering consultations regarding patients with potential thoracic surgical problems on other services. In addition, opportunities are available for experience in treatment of critically ill patients in the surgical intensive care unit.

Assessment:  Faculty/Resident Evaluation

Test/Quiz  Presentation

Other:

### **Off-Campus Thoracic and Cardiac Surgery Externship**

#### **SURG 5326**

***This course requires application using VSAS or other arrangements made by the student.***

***Off-Campus Add Form Required***

Category: Clinical

Classification: Off-Campus

Contact: Clerkship Coordinator

Eligible: 4<sup>th</sup> Year Only

Months Offered: all

**Course Description:** This elective is designed to provide additional experience in pathophysiology and allow students student to work with a cardiothoracic surgeon off campus or at another medical school to provide the student with additional experience in this field.

Assessment:  Faculty/Resident Evaluation

Test/Quiz  Presentation

Other:

## Urology

### **Urology Externship**

#### **SURG 5350**

Category: Clinical

Classification: 1

Contact: Clerkship Coordinator, Regional  
Campus Coordinator

Eligible: 3<sup>rd</sup> Year plus Clerkship

Months Offered: all

**Course Description:** This course is designed to provide students with the opportunity to rotate on a 4 week patient care elective in Urology. Emphasis is on evaluation of urologic patient, both the inpatient and outpatient. Students have an opportunity to assist at cystoscopies and several operative procedures. Opportunity to learn proper technique for urethral dilatations, urethral catheterizations and prostatic evaluation is available. Students are assigned inpatients in rotation and perform histories and physical examinations upon them and then follow the patient daily, including preoperative, operative and postoperative care. Students make ward rounds and review all urologic x rays daily. Informal conferences with faculty and/or residents are held covering such topics as G.U. malignancies, urolithiasis, prostatic disease, neurogenic bladder and complications of the catheter. Note that this course does not meet the requirements of the Sub-I. Students wishing to take a Sub-I in Urology should use the SURG 5007 course with a focus in Urology.

Assessment:  Faculty/Resident Evaluation

Test/Quiz  Presentation

Other:

### **Urology Off-Campus Externship**

#### **SURG 5351**

***This course requires application using VSAS or other arrangements made by the student.***

***Off-Campus Add Form Required***

Category: Clinical

Classification: Off-Campus

Contact: Clerkship Coordinator

Eligible: 4<sup>th</sup> Year Only

Months Offered: all

**Course Description:** This is a four week patient care off campus elective which can be taken with a qualified urologist anywhere.

Assessment:  Faculty/Resident Evaluation

Test/Quiz  Presentation

Other:

### **Urology Research**

#### **SURG 5352**

***This Course Requires a Surgery Research Form to accompany the MCG Add Course Form. Please see curriculum webpage -***

***<https://www.augusta.edu/mcg/coffice/phase3.php>***

Category: Research

Classification: Research

Contact: Department Faculty, Clerkship Coordinator,  
Regional Campus Coordinator

Eligible: All

Months Offered: all

**Course Description:** This course is designed to provide students with research experience in urologic research, participate in studies that are currently ongoing. All IRB projects must be approved ahead of time. Please note that approval can take 90 days.

Assessment:  Faculty/Resident Evaluation

Test/Quiz  Presentation

Other:

### **Pediatric Urology Externship**

#### **SURG 5379**

Category: Clinical

Classification: 1

Contact: Clerkship Coordinator, Regional  
Campus Coordinator

Eligible: 3<sup>rd</sup> Year plus Clerkship

Months Offered: all

**Course Description:** This course is designed help students identify pediatric urology problems, evaluate and treat patients and learn surgical techniques. Students will participate in clinic, urodynamics and the operating room.

Assessment:  Faculty/Resident Evaluation

Test/Quiz  Presentation

Other:

***Courses Open to All M3 & M4 Students – NO CONDITIONS:***

Anesthesiology Research	ANES 5002
Pain Management	ANES 5008
Respiratory Care	ANES 5014
Anatomy Research	ANAT 5002
Clinical Anatomy and Teaching Skills	ANAT 5005
Biochemistry & Molecular Bio Research	BCMB 5002
Dermatology Externship	DERM 5001
Emergency Medicine Research	EMED 5004
Family Medicine Externship	FMPC 5008
Family Medicine Research	FMPC 5009
Vulnerable Populations Elective	FMPC 5018
Health Policy and Advocacy	FMPC 5020
Population Health/Business in Medicine	FMPC 6000
Bioethics Scholarly Study	FMPC 6001
Bioethics Capstone Course	FMPC 6002
Bioethics Practicum	FMPC 6003
Food as Medicine	FMPC 6004
Introduction to Rheumatology	GMED 5078
Palliative Care Externship	GMED 5095
Introduction to Outpatient Internal Medicine	GMED 5096
Medical Education	MEDI 5012
Simulation Education Elective	MEDI 6001
Neurology Research	NEUR 5006
Ophthalmology Research	OPTH 5002
Surgical Pathology Externship	PATH 5003
Clinical Pathology Externship	PATH 5009
Neuropathology Externship	PATH 5011
Anatomic Pathology Externship	PATH 5016
Clinical Microbiology Externship	PATH 5019
Introduction to Pathology	PATH 5028
Pediatric Research	PEDS 5007
Spirituality and Medicine	PEDS 5038
Pharmacology Tutorial	PHRM 5003
Pharmacology Research	PHRM 5004
Clinical Pharmacology Tutorial	PHRM 5012
Critical Care Pharmacology Tutorial	PHRM 5015
Physiology Research	PSIO 5011
Radiology Externship	RADM 5001
Pediatric Radiology Externship	RADM 5003
Radiology Research	RADM 5013
Introduction to Clinical Ultrasound	RADM 5015
General Surgery Research	SURG 5002
History of Medicine	SURG 5015
Orthopedics Research	SURG 5292
Urology Research	SURG 5352

***Courses Open to 3<sup>rd</sup> Year Students after Certain Conditions Met:  
(See Course Description for Conditions)***

Anesthesia Externship	ANES 5011
International & Travel Medicine	EMED 5007
Rural Emergency Medicine	EMED 5013
Nephrology Consult	GMED 5016
Cardiology Consultation Service	GMED 5017
Gastroenterology Externship	GMED 5021
Cardiology Externship	GMED 5040
Neurology Consult and Clinics Externship	NEUR 5003
Maternal Fetal Medicine Externship	OBGN 5005
Reproductive Endocrinology Externship	OBGN 5006
Gynecologic Oncology Externship	OBGN 5007
Benign Gynecology Externship	OBGN 5008
Urogynecology Externship	OBGN 5012
Ophthalmology Externship	OPTH 5001
Pediatric Cardiology Externship	PEDS 5005
Pediatric Allergy Immunology Externship	PEDS 5006
Pediatric Gastroenterology Externship	PEDS 5011
Pediatric Infectious Disease Externship	PEDS 5013
Newborn Nursery Externship	PEDS 5014
Pediatric Hematology/Oncology Externship	PEDS 5017
Pediatric Endocrinology Externship	PEDS 5020
Pediatric Pulmonology Externship	PEDS 5022
Pediatric Assistantship at Special Needs Summer Camp	PEDS 5035
Pediatrics Sub-specialties Externship	PEDS 5036
Consult-Liaison Psychiatry Externship	PSRY 5002
Eating Disorders Externship	PSRY 5007
Child & Adolescent Psychiatry Externship	PSRY 5023
Psychiatric and Psychosocial Issues of HIV/AIDS	PSRY 5028
Molecular Neurobiology of Treatment Outcome of Schizophrenia	PSRY 5029
Psychiatry Research	PSRY 5040
Addiction Psychiatry Externship	PSRY 5041
Emergency Psychiatry Externship	PSRY 5043
Neurostimulation Externship	PSRY 5044
Advanced Psychiatry Externship	PSRY 5045
Mood Disorders Externship	PSRY 5046
Otolaryngology Externship	SURG 5254
Pediatric Surgery Externship	SURG 5300
Plastic Reconstructive Surgery Externship	SURG 5375
Urology Externship	SURG 5350
Pediatric Urology Externship	SURG 5379

***Courses Open to 4<sup>TH</sup> Year Students Only:***

**ALL SELECTIVES**

**ALL OFF-CAMPUS ELECTIVES (VSAS)**

<b>Advanced Dermatology</b>	<b>DERM 5003</b>
<b>Emergency Medicine Externship</b>	<b>EMED 5002</b>
<b>Emergency Ultrasound</b>	<b>EMED 5008</b>
<b>Emergency Medical Services</b>	<b>EMED 5014</b>
<b>Primary Care Sports Medicine</b>	<b>FMPC 5015</b>
<b>Family Medicine Procedures</b>	<b>FMPC 5019</b>
<b>Rheumatology Externship</b>	<b>GMED 5010</b>
<b>Hematology/Oncology Externship</b>	<b>GMED 5012</b>
<b>Nephrology Externship</b>	<b>GMED 5013</b>
<b>Rehabilitation Medicine Externship</b>	<b>GMED 5014</b>
<b>Pulmonology Externship</b>	<b>GMED 5023</b>
<b>Infectious Disease Externship</b>	<b>GMED 5025</b>
<b>Medicine Research</b>	<b>GMED 5028</b>
<b>Endocrinology Research</b>	<b>GMED 5039</b>
<b>Epidemiology Atlanta Externship</b>	<b>GMED 5056</b>
<b>Point of Care Ultrasound</b>	<b>MEDI 5013</b>
<b>Obstetrics &amp; Gynecology Research</b>	<b>OBGN 5011</b>
<b>Gynecology Boot Camp</b>	<b>OBGN 5016</b>
<b>Advanced Pediatrics</b>	<b>PEDS 5037</b>
<b>Radiation Therapy Externship</b>	<b>RONC 5006</b>
<b>Advanced Diagnostic Radiology Externship</b>	<b>RADM 5004</b>
<b>Vascular/Interventional Radiology Externship</b>	<b>RADM 5007</b>
<b>Process Improvement in Health Care</b>	<b>RADM 5020</b>
<b>General Surgery Externship</b>	<b>SURG 5003</b>
<b>Surgery Boot Camp</b>	<b>SURG 5380</b>
<b>Neurosurgery Externship</b>	<b>SURG 5200</b>
<b>Neurosurgery Externship &amp; Research</b>	<b>SURG 5203</b>
<b>Pediatric Neurosurgery Externship</b>	<b>SURG 5205</b>
<b>Orthopedics Externship</b>	<b>SURG 5275</b>
<b>Thoracic and Cardiac Surgery Externship</b>	<b>SURG 5325</b>



