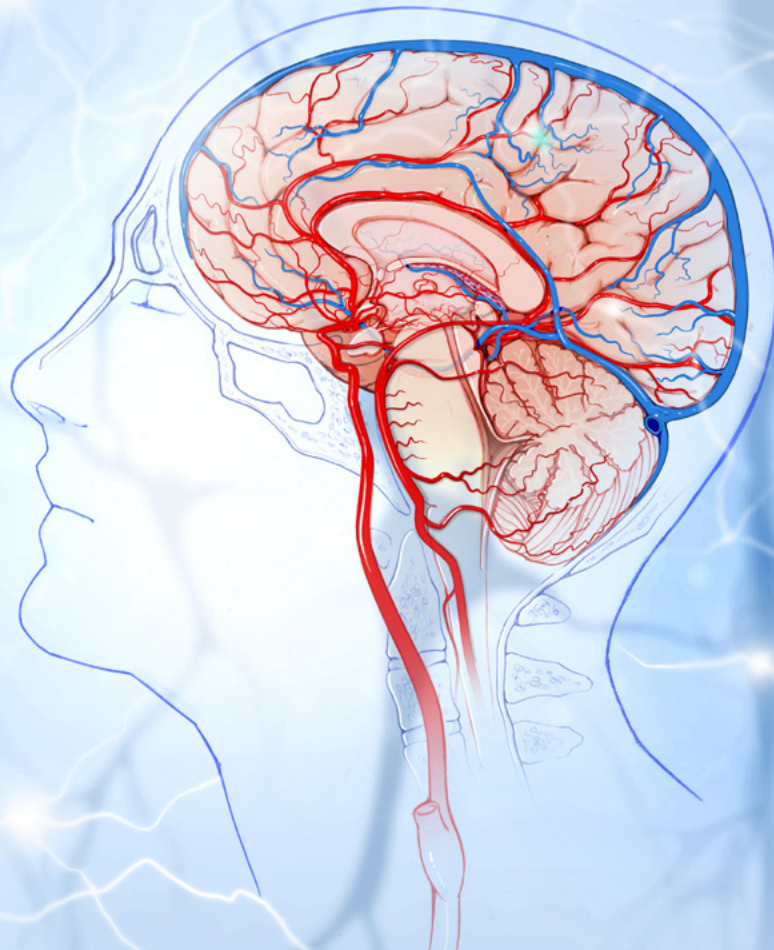


Seizures, Spells and Shakes: Neurology for the Non-Neurologist



July 12 - 15, 2023

Presented by

Department of Neurology

Medical College of Georgia, Augusta University with Division
of Professional and Community Education

Turtle Point Clubhouse, 1 Turtle Point Ln, Kiawah Island,
South Carolina

Cover Illustrated by: Colby Polonsky

Objectives

This conference should enable participants to:

- conduct a neurological examination and determine when to order neurological investigations
- recognize common neurological problems
- manage common neurological symptoms, including headaches, seizures and dizziness
- utilize new treatment techniques for neurological diseases
- recognize and manage movement disorders such as Parkinson's disease
- manage neurological emergencies such as strokes and seizures
- list strategies to diagnose and manage Parkinson's disease, headaches, TIA and movement disorders.

This course always receives enthusiastic reviews from enrollees. In the words of one physician, "This is the best clinical course I have ever attended. I particularly appreciate the fact that the course hit just the right level for a primary-care physician." After one course, 100 percent of participants felt the course met the stated objectives.

Accreditation

The Medical College of Georgia at Augusta University is accredited by the Accreditation Council for Continuing Medical Education to provide continuing medical education for physicians and providers.

Designation

The Medical College of Georgia at Augusta University designates this live activity for a maximum of 12.75 AMA PRA Category 1 Credits™. Physicians should claim only the credit commensurate with the extent of their participation in the activity.

Target Audience

This case-study course will provide an overview of common neurological problems for primary care and EM providers.

Course Schedule

Wednesday, July 12, 2023

5 - 6 pm Early Registration

Thursday, July 13, 2023

- 7:30 am Early registration and Continental breakfast
- 8:00 am Welcome and Introduction to the Course
- **J. Ned Pruitt II, M.D.**
- 8:15 am “The Practical Neuro Exam”: Live demonstration
- **J. Ned Pruitt II, M.D.**
- 9:15 am “My Memory is Bad”, Evaluation of Cognitive Decline
- **John Morgan, M.D., Ph.D.**
- 10:00 am “Chronic Headaches - Pearls of Diagnosis”
- **J. Ned Pruitt II, M.D.**
- 10:45 am *Break*
- 11:00 am “My feet are numb!” - Case studies, exam tips, and workup - **Ben Barnes, M.D.**
- 11:45 am “Restless Legs Syndrome” -Evaluation and Management – **Julie Kurek, M.D.**
- 12:30 pm *Adjourn*

Friday, July 14, 2023

- 7:30 am Continental Breakfast
- 8:00 am “I keep having these spells. Are they seizures?”
- **Debra Moore-Hill, M.D., M.P.H.**
- 8:45 am “I can’t stop shaking!”, Evaluation and Management of Tremors - **Julie Kurek, M.D.**
- 9:30 am “Doc, I’m Weak.” – “Central vs Peripheral Motor Weakness”- **Ben Barnes, M.D.**
- 10:15 am *Break*
- 10:30 am “TIA and Stroke Diagnostic Pearls”
- **Jeffrey Switzer, D.O.**
- 11:15 am “Remote Ischemic Conditioning in Acute Stroke and Stroke Prevention” - **David Hess, M.D.**
- 1:00 pm *Adjourn*

Saturday, July 15, 2023

- 7:30 am Continental Breakfast
- 8:00 am “Case Studies in Epilepsy”
- **Debra Moore-Hill, M.D., M.P.H.**
- 8:45 am “I’m Dizzy” – Evaluation of the “Dizzy” Patient
- **Jeffrey Switzer, D.O.**
- 9:30 am “What Doesn’t Kill You Makes You Stronger”
- **David Hess, M.D.**
- 10:00 am *Break*
- 10:15 am “Case Studies in Parkinson’s disease”
- **John Morgan, M.D., Ph.D.**
- 11:15 am “New Strategies in the Care of Migraine”
- **J. Ned Pruitt II, M.D.**
- 12:00 pm *Adjourn*

Course Director

J. Ned Pruitt II, M.D. - Professor of Neurology, Assistant Dean of Curriculum-Clinical Integration

Course Faculty

Ben Barnes, M.D. - Assistant Professor of Neurology

David Hess, M.D. - Dean, Medical College of Georgia, Executive Vice President of Medical Affairs & Integration, Professor of Neurology

Julie Kurek M.D. - Associate Professor of Neurology

Debra Moore Hill, M.D., M.P.H. - Associate Professor, Residency Program Director, Chief of Division of Epilepsy, Vice Chair, Education

John Morgan, M.D., Ph.D. - Professor of Neurology, Vice Chair of Research

Jeffrey A. Switzer, D.O. MCTS, FAHA, FAAN - Professor and Chair of Neurology, Director, Comprehensive Stroke Center; Director, Telestroke and Teleneurology

Registration

	In- Advance	On-Site
Physician	\$595	\$645
Nurse Practitioner /Physician Assistant	\$395	\$445



Please register online via credit card at:

<https://mcg.cloud-cme.com/course/courseoverview?P=0&EID=19185&IsExhibitor=false>



For questions please call : 706-721-9090

Comfort Zone

Although every effort is made to have a comfortable temperature in the meeting room, we realize everyone's comfort zone is different. Please bring a jacket or light wrap in case the room is too cool for your comfort.

Special Needs

The Augusta University Division of Professional and Community Education complies with the Americans with Disabilities Act. If you require special services, facilities or dietary considerations (vegetarian or otherwise) to support your participation in this continuing education program, contact the conference coordinator at **800-221-6437** or **706-721-3967**.

Augusta University is not responsible for any circumstance making it impossible to attend their continuing education courses due to acts of God, war, government regulations, disaster, strikes, civil disorder or curtailment of transportation facilities. If Augusta University cancels a continuing education activity you will be refunded your registration fee.

Location & Lodging

Since the course will be held in The Turtle Point Clubhouse, various villa accommodations have been reserved for course enrollees.

Daily Rates (Scenic View)

One-Bedroom Villa \$245
Two-Bedroom Villa \$369

Reservations: 800-654-2924

Please identify your group as **Augusta University Neurology**, and/or the group booking number **18861**.

Deposit: Each reservation must be guaranteed by a deposit equal to one night's lodging (plus 12.5% tax) payable to the Kiawah Island Resort. The Kiawah Island Resort will confirm your reservation directly to you when your deposit is received. If the type of accommodation you request is sold out, the most appropriate lodging available will be reserved for you. Your deposit must be received within five days if not paid by major credit card. All rates are subject to 12.5% tax. Cancellations must be received 14 days prior to arrival date for refund of deposit.

Airport Transportation

To schedule your reservation for transportation, please call **843-768-2790**. Rental cars are also available at the Charleston Airport. Contact your preferred provider directly.

