

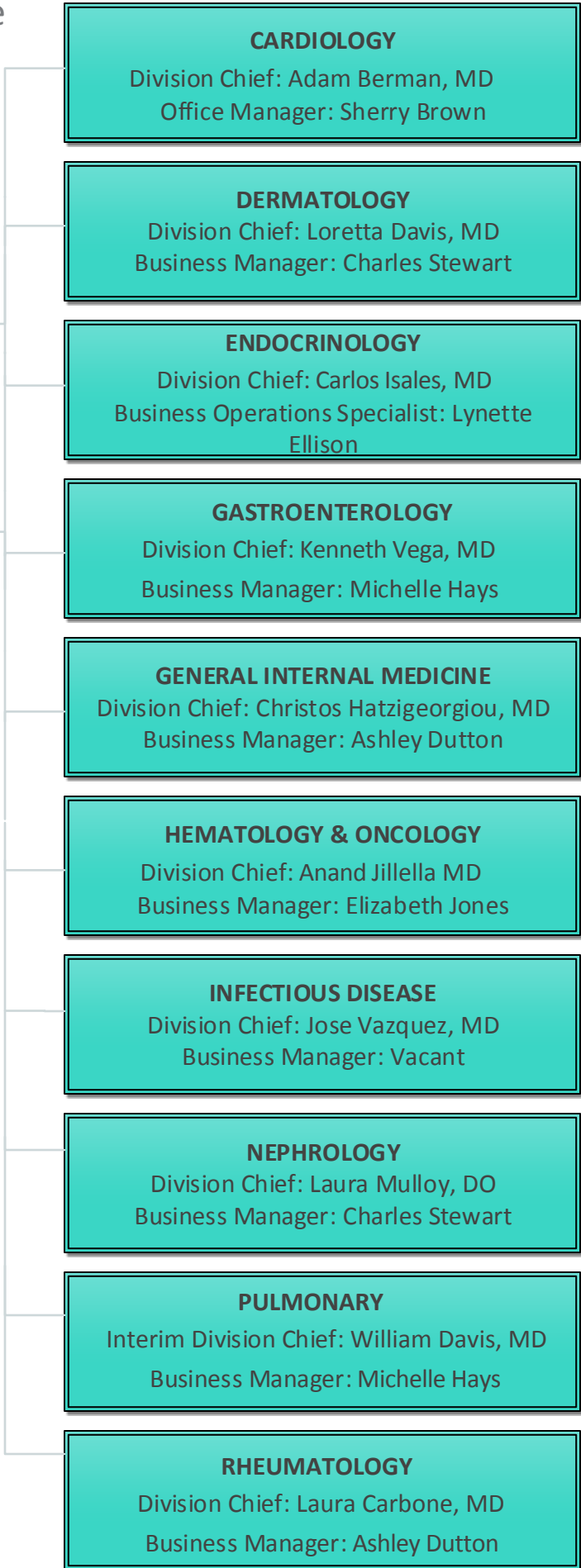


Department of Medicine

**DIVISION
ORGANIZATIONAL
CHART**

Department of Medicine
OFFICE OF THE CHAIR
Michael P. Madaio, MD
Sydenstricker Professor and
Chairman

DEPARTMENT
ADMINISTRATOR
Justin Pantano



CARDIOLOGY
Division Chief: Adam Berman, MD
Office Manager: Sherry Brown

DERMATOLOGY
Division Chief: Loretta Davis, MD
Business Manager: Charles Stewart

ENDOCRINOLOGY
Division Chief: Carlos Isales, MD
Business Operations Specialist: Lynette
Ellison

GASTROENTEROLOGY
Division Chief: Kenneth Vega, MD
Business Manager: Michelle Hays

GENERAL INTERNAL MEDICINE
Division Chief: Christos Hatzigeorgiou, MD
Business Manager: Ashley Dutton

HEMATOLOGY & ONCOLOGY
Division Chief: Anand Jillella MD
Business Manager: Elizabeth Jones

INFECTIOUS DISEASE
Division Chief: Jose Vazquez, MD
Business Manager: Vacant

NEPHROLOGY
Division Chief: Laura Mulloy, DO
Business Manager: Charles Stewart

PULMONARY
Interim Division Chief: William Davis, MD
Business Manager: Michelle Hays

RHEUMATOLOGY
Division Chief: Laura Carbone, MD
Business Manager: Ashley Dutton