



## **The Medical College of Georgia Office of Academic Affairs**

Approved on: August 2, 2022  
Effective on: immediately  
Last Approval/Revision: September 2, 2025  
Expires: on revision

Applicable to: Clerkship Students  
Approved by: COC  
Category: NBME Testing  
Context:

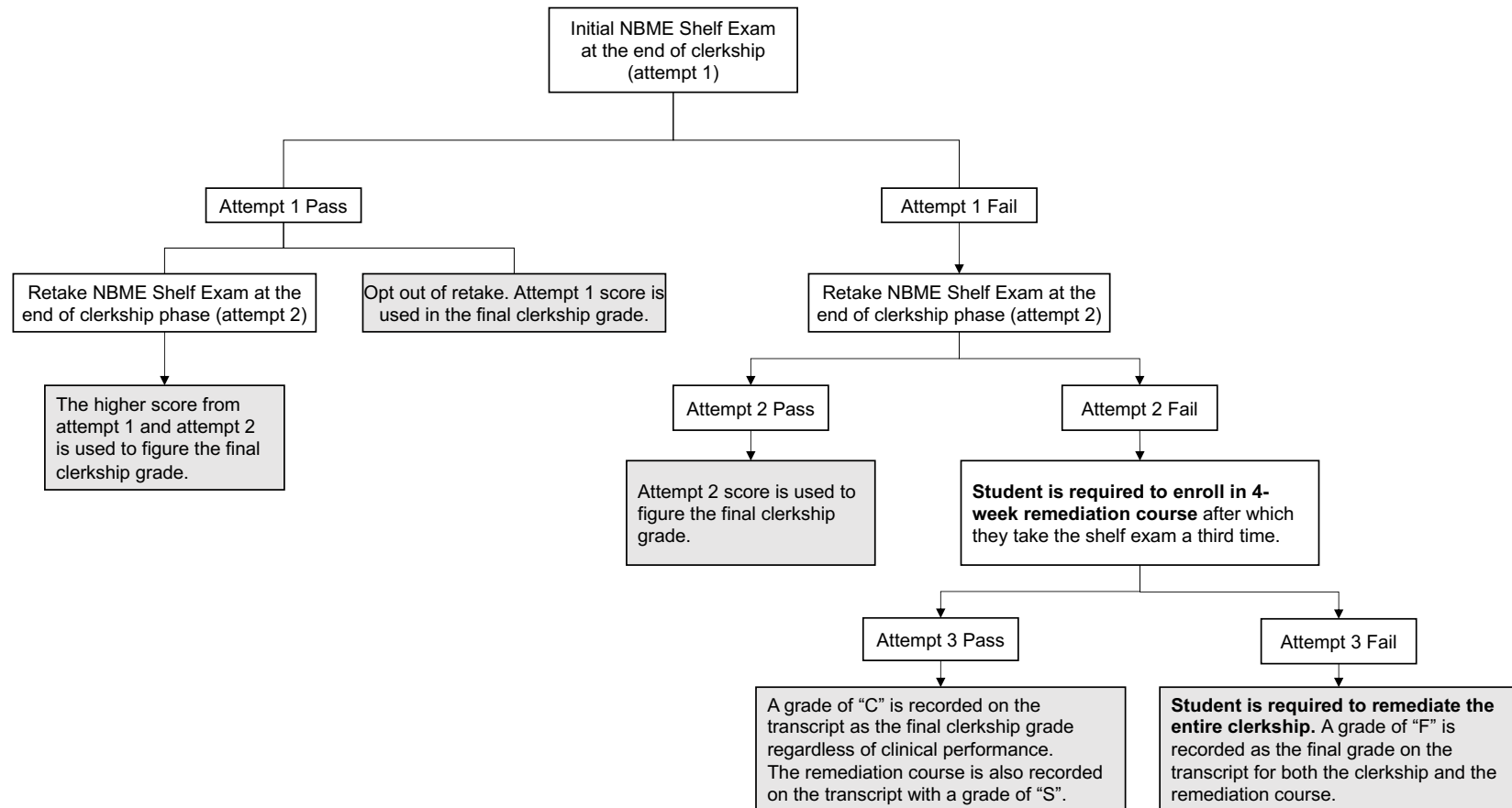
### **Shelf Exam Retake Opt Out Policy**

Regardless of clerkship grade, students are automatically scheduled to take the retake shelf exams unless they choose to opt out. Students may elect to opt out of the exam for any clerkship in which they have a "C" or above after the administration of the first shelf exam. Students in the PGY-1 Pathway, the Dual Degree Pathway, and the Advanced Research Pathway must have a "B" or above after the administration of the first shelf exam in order to opt out if they wish to remain in that Pathway.



# The Medical College of Georgia Office of Academic Affairs

## Appendix A: NBME Retake Exam Flowchart



\*DISCLAIMER: Printed version of this document is unofficial for reference only; official version can be found online: <https://www.augusta.edu/mcg/coffice/curriculum/policies.php>