



Figure (Life) Drawings Portfolio Requirement

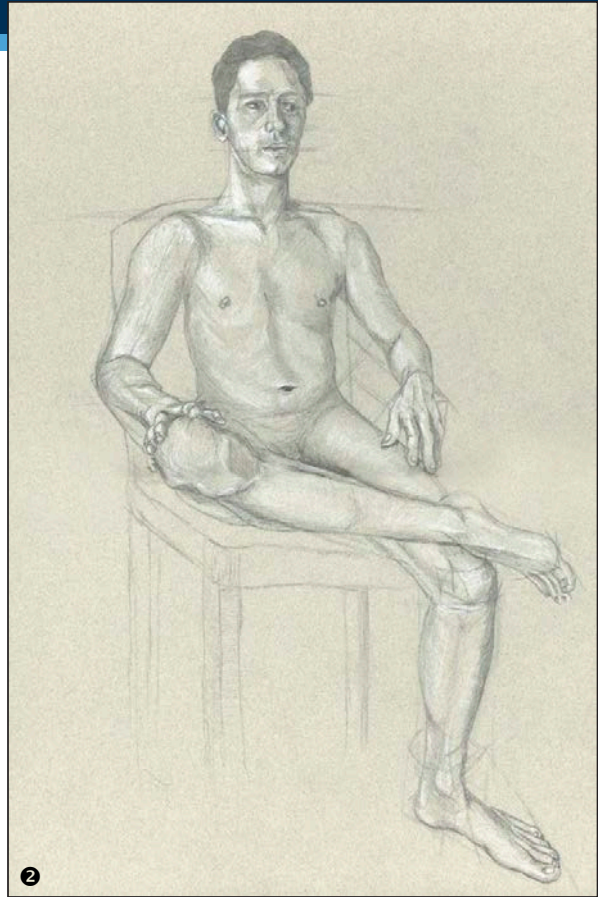
June, 2021

All applicants must submit a digital portfolio of original creative work. The Applicant Digital Portfolio (ADP) must be submitted online following the [instructions for the MIGP Applicant Digital Portfolio](#). The ADP must be submitted as a PowerPoint, using the MIGP PowerPoint Template. The ADP must be received by midnight on January 10. The portfolio must contain 20 pieces of original creative work. Specific required works are listed in the ADP instructions. All artwork must be drawn from direct observation (not from photographic or video reference unless the photo or video was taken by the applicant). **Five figure (life) drawings must be included in the ADP. At least two drawings should be long poses (3 hours or more).**

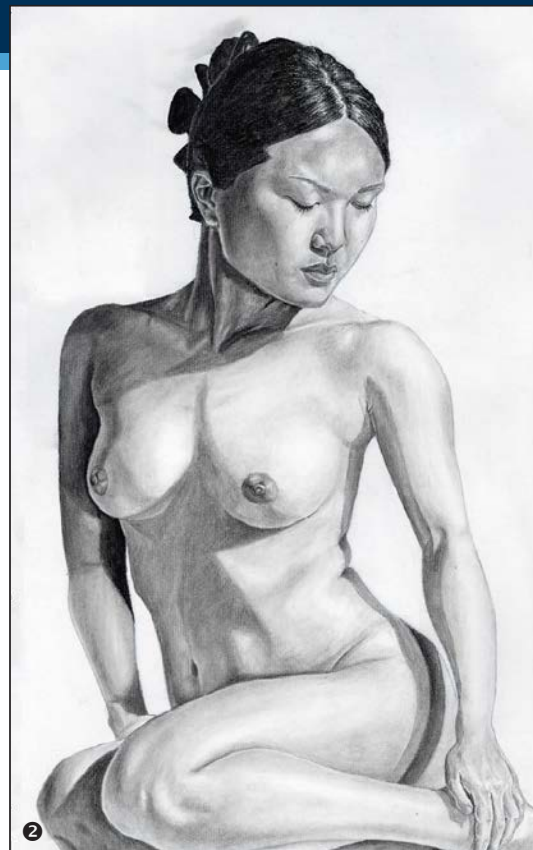
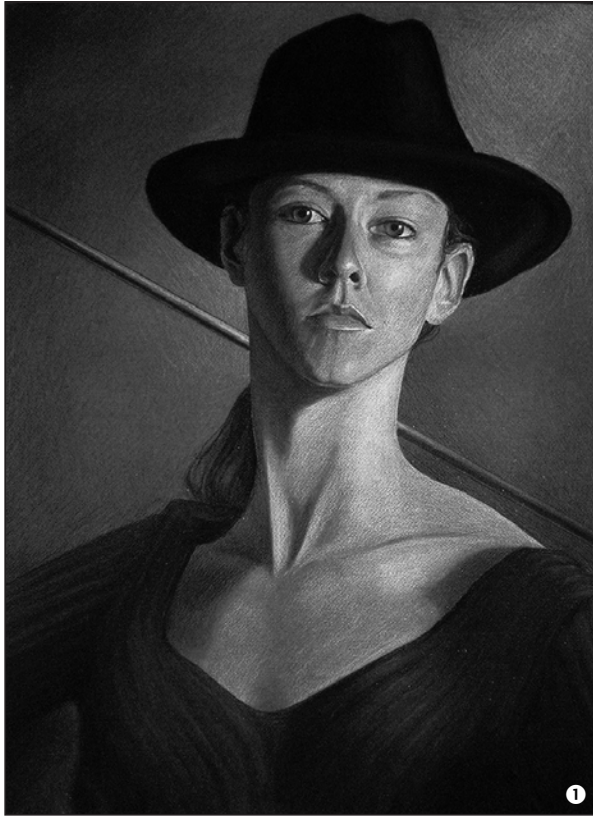


We request drawings and/or paintings of the human form because they demonstrate an applicant's ability to perceive and render functional human structure and proportion as well as light on form in a realistic manner. Rendering of fine detail is of secondary concern, but it is still important. Images should be drawn from direct observation of a live model and without the use of photography or video. (If, due to COVID, you had to use a photo or video source, please note this fact on the artwork.) Full-figure nude (undraped) drawings are preferred. However, in-depth studies of limbs or isolated features may also be submitted. Portraits, including self-portraits, are encouraged. We also like to see fore-shortened views of the figure. These figure studies do not need to have been drawn during a formal class.

- 1 Portrait, by M. Wallin ('19).
- 2 "Chelsea Seated," by S. Taylor ('12).



- ❶ Seated figure from the back, by C. Gamboa ('22).
- ❷ Seated figure, by K. Frankel ('22).
- ❸ Reclining figure, by Z. Kevorkian ('19).
- ❹ Seated figure, by S. Hennessey ('22).



- ❶ "Self Portrait," by M. Gullotto ('12).
- ❷ Seated figure, by E. Miller ('22).
- ❸ "Shoulder & Arm Study," by J. B. Chidsey ('13).
- ❹ "Kenzie Seated," by V. Rogers ('20).



- ❶ Reclining figure, by A. Manowski ('20).
- ❷ Seated figure, by K. Davis ('22).
- ❸ Standing figure, by N. Esplin ('13).
- ❹ Seated figure, by C. Oh ('22).
- ❺ Reclining figure, by K. Harris ('22).

