

augusta.edu/mcg/admissions



AUGUSTA UNIVERSITY
MEDICAL COLLEGE
OF GEORGIA

CONTINUE
THE LEGACY.
DEFINE YOUR
FUTURE.

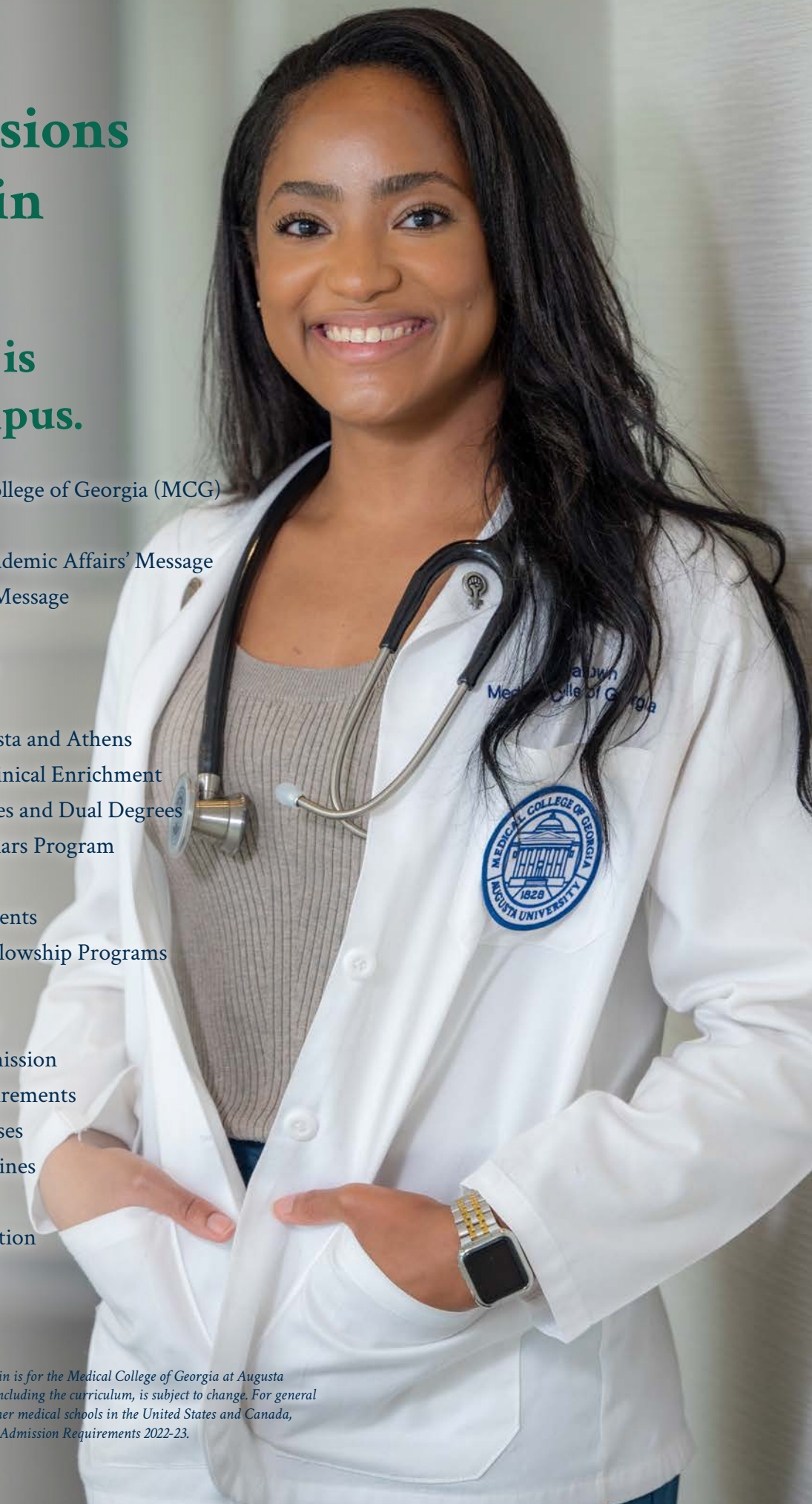


Albany | Athens | AUGUSTA | Brunswick | Dalton | Rome | Savannah

Admissions Bulletin 2023-24

**Georgia is
our campus.**

- 3 — About Medical College of Georgia (MCG)
- 4 — Dean's Message
- 5 — Vice Dean for Academic Affairs' Message
- 6 — Associate Dean's Message
- 7 — Statewide Impact
- 8-9 — MCG Curriculum
- 10-11 — Dual Degrees
- 12 — Research in Augusta and Athens
- 13 — Clerkships and Clinical Enrichment
- 14-16 — Regional Campuses and Dual Degrees
- 17 — Professional Scholars Program
- 18 — Student Support
- 20 — Traditions and Events
- 22 — Residency and Fellowship Programs
- 23-24 — Student Life
- 25 — Applying to MCG
- 26 — Pathways for Admission
- 27 — Application Requirements
- 28 — Prerequisite Courses
- 30-31 — Admission Guidelines
- 32-33 — Policies
- 34-35 — Financial Information
- 36-37 — Tuition and Fees
- 38 — Contact Us



Mission

To lead Georgia and the nation to better health through excellence in biomedical education, discovery, patient care and service.

History and Legacy

The Medical College of Georgia at Augusta University, Georgia's public flagship medical school, is the 13th oldest medical college in the United States. Founded in 1828 by Dr. Milton Anthony as the Medical Academy of Georgia, MCG began classes 1829 with seven students and three faculty members who met in the city hospital. MCG graduated its first class of four students in 1833 and admitted the first female medical student, Loree Florence, in 1921 who later became the first female medical graduate in the state. Almost two hundred years later, MCG has transformed into a true academic medical center which focuses on biomedical education, discovery, clinical care and service. With 3,756 total faculty, including 2,955 volunteer clinical faculty serving across Georgia, 23 academic departments and the recently expanded medical student entering class size of 300, MCG has continued to expand its footprint and statewide impact. In 2005, MCG opened its first regional clinical campus in Albany, GA where students are exposed to health inequities and experience clinical practice one-on-one with clinicians outside of the academic medical center in Augusta. Following success of the Southwest (Albany) campus, MCG opened two additional regional clinical campuses: our Southeast campus in Savannah and Brunswick and our Northeast campus in Rome and Dalton. Finally, MCG students now have three full four-year campus locations to choose from: our flagship location in Augusta, our AU/UGA Medical Partnership campus in Athens, and opening in 2024, our Southeast campus located on the Georgia Southern University campus in Savannah. MCG is committed to serving the needs of our diverse state. Specifically, we are the leading provider of physicians of the four Georgia-based medical schools and nearly early 50% of MCG graduates remain in the state to practice. In fact, Georgia ranks 16th in the nation in the percentage of physicians retained in the state from public undergraduate medical education.

The information in this bulletin is for the Medical College of Georgia at Augusta University. All information, including the curriculum, is subject to change. For general admissions information on other medical schools in the United States and Canada, please refer to Medical School Admission Requirements 2022-23.



DEAN'S MESSAGE

Please let me congratulate you on your decision to become a physician. While it is not a profession for the faint of heart, it is without question among the highest callings.

I wanted to be a doctor as far back as I can remember, the first in my family. I also remember being sprawled out on the floor as a child with terrible ear infections and my pediatrician rescuing me from those painful days.

People sometimes ask if I could go back, what I would be. I would choose medicine again and again because of what it has permitted me to experience and to find. Because it has opened doors into the lives of so many brave individuals who we call our patients and because each day it is a challenge worth taking.

I am very glad that you are considering taking on this great challenge and privilege right here, at Georgia's public medical school. While I realize there are limited history enthusiasts among us, please know that the Medical College of Georgia has a near 200-year-old legacy of educating exceptional physicians.

I came to MCG to study neurology and stroke after finishing my undergraduate medical education at the University of Maryland School of Medicine. I found here a professional home and I have never left it.

MCG is a dynamic and storied place that offers the best of many worlds. We have the 9th largest medical school class in the nation but still a very personal approach to medical education. While we recruit great educators, scientists and clinicians from all over, we tend to attract faculty who really do love to teach medical students; who understand that learning in reality is a two-way street and that we learn as you learn.

We have a true statewide educational presence that offers tremendous variety as well, from clinical experiences in complex care facilities like our own teaching hospitals to small town solo practices. In fact, we have a huge and growing network of volunteer faculty across Georgia, many of whom are MCG graduates, who enable us to provide such a diverse and intense learning environment.

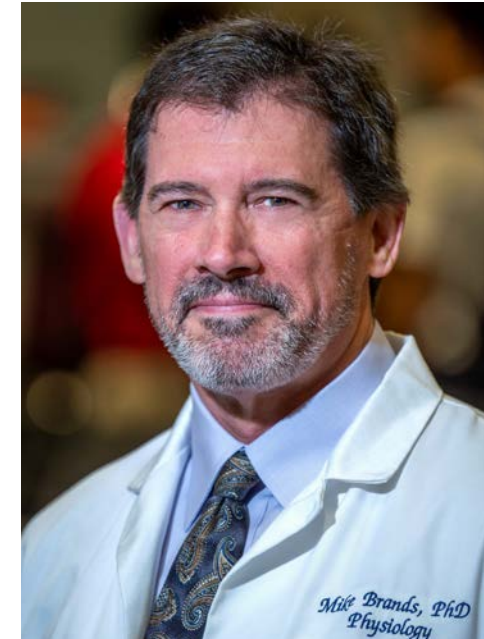
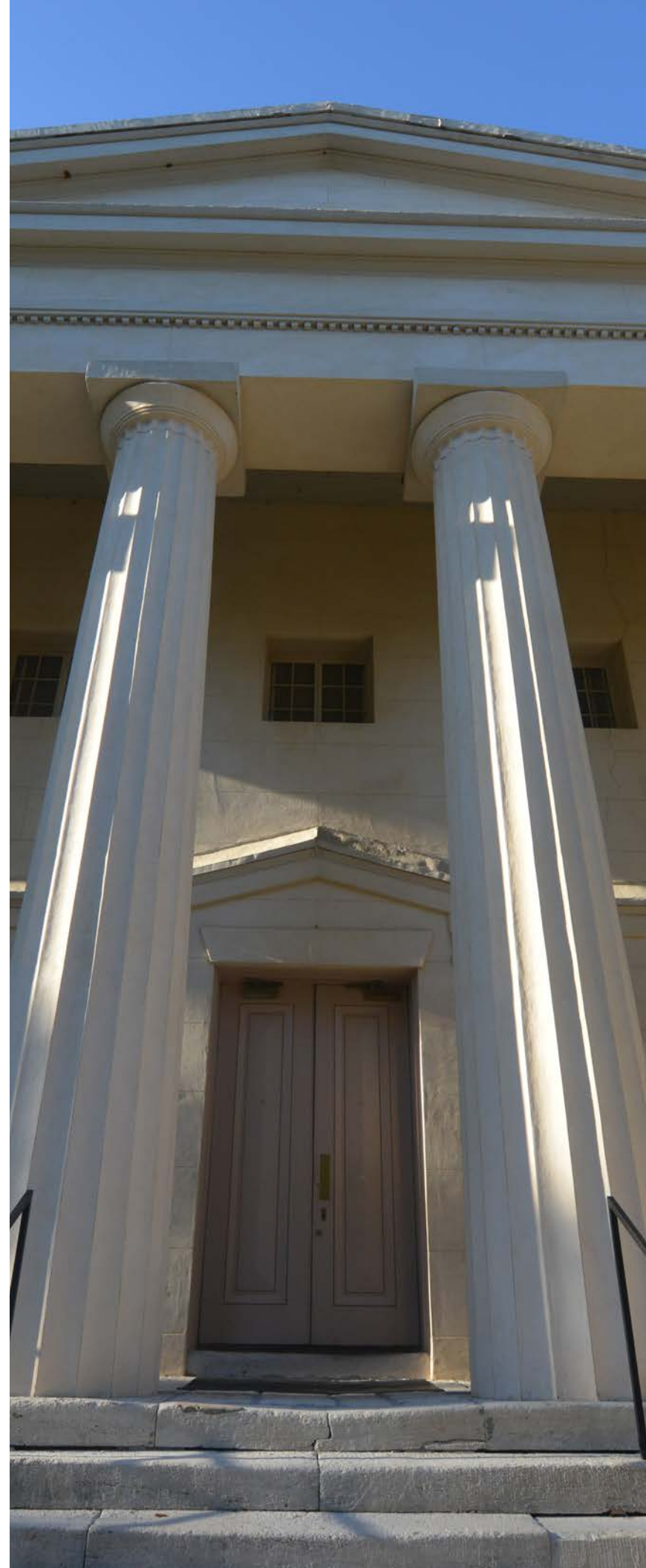
By the time you graduate from MCG, you will have sufficient experience to decide what type of medicine you want to practice, and you will be prepared for and competitive in whatever you choose. I believe, you also will have a permanent home, not necessarily where you will stay, as I have, but a medical school to which you will remain connected and of which you will be proud.

I wish you the best as you make these important decisions about your future and promise that MCG will be here to help you fulfill your goals and your dreams.

Most respectfully yours,

David C. Hess, MD

Dean, Medical College of Georgia | Executive Vice President for Medical Affairs and Integration at Augusta University | Presidential Distinguished Chair



FROM THE VICE DEAN FOR ACADEMIC AFFAIRS

We are delighted to help you explore the unique opportunities waiting for you at the Medical College of Georgia. The singular focus of our faculty and staff is ensuring that you achieve your goals in the medical profession.

Welcoming your medical class will be a faculty with integrated professional diversity that brings broad expertise and perspective to your education from day one. Gone are the days of basic science lectures for

a year before progressing to clinical-oriented content and activities. Your first week at the Medical College of Georgia will see you engaged in: small-group, case-based learning facilitated by basic science and clinical educators, small-group, patient-centered learning under the direction of clinical preceptors, and large-group lectures that integrate clinical medicine and basic science mechanisms organized around weekly themes. You also will begin seeing real patients and learning the electronic medical record system in your first weeks using telemedicine. In addition, your patient-centered learning activities will include ultrasound in our one-of-a-kind ultrasound program, patient encounters using standardized patients, and training in our Interdisciplinary Simulation Center. Again, this is from the very beginning!

And now a little bit more about the outstanding people here to help you learn. The physicians in the classroom and working with you in small-group and patient-centered learning activities also are active in clinical practice, thus sharing with you their up-to-date, state-of-the-art clinical know-how. Likewise, a large cohort of our basic science educators are NIH-funded biomedical research scientists, once again sharing with you their state-of-the-art expertise. Integrated with these two groups is a team of professional medical educators who use modern education approaches to interweave all this together.

Behind this tremendous education experience is a team of professionals dedicated to supporting you. Part of that team are the 2 faculty mentors who lead each group of 15-20 students from each class, who come together in each of our Learning Communities (LC) that is part of our YOU+ curriculum. Each LC has dedicated space in the J. Harold Harrison MD Education Commons that is a place for relaxation, camaraderie, and LC activities. Our offices of Career Advising, Diversity, Equity, and Inclusion, and Academic Advising all are led by practicing physicians dedicated to helping you navigate medical school. Likewise, our office of Student Affairs, with its Class Deans, is a group of physicians who devote themselves to ensuring you have all the support you want or need.

It may be hard to imagine, but all of these dedicated individuals, along with scores of professional staff, work year-round to make sure you have the best medical education experience possible. We all are here for you, and we cannot wait to welcome you to the Medical College of Georgia!

Sincerely,

Michael W. Brands, PhD
Regents' Professor of Physiology | Vice Dean for Academic Affairs

FROM THE ASSOCIATE DEAN OF ADMISSIONS

Thank you for your interest in the Medical College of Georgia. Founded in 1828 as the nation's 5th public medical school, we have a rich and long-standing tradition of educating excellent physicians. Whether the focus is patient care, academics, research, or a combination of these, our graduates have a proven track record of success and leadership in our community, in our state, and across our nation.

Despite ranking as one of the nation's largest medical schools by class size, MCG is not a one size fits all model and continues to evolve along with technological and educational advancements. As the state's only public medical school, our mission is to continue to elevate the healthcare of Georgians and expose our students to the healthcare inequities which exist in our own backyard. Our uniquely distributed campus model, and revised curriculum offers educational and clinical experiences to fit individual learning styles. To continue to address Georgia's physician shortage, MCG is excited to announce the opening of a third four-year campus located on the Armstrong campus of Georgia Southern University in Savannah. This campus will welcome its first class of 40 students in the fall of 2024 and will bring the MCG total entering class size to 304 medical students (including 204 students in Augusta and 60 in Athens).

In addition to an innovative pre-clinical medical foundation, MCG students will receive a wide variety of clinical experiences provided by our three main campuses and our three regional clinical campuses located in Savannah/Brunswick, Rome/Dalton and Albany. To supplement these experiences, there are more than 300 clinical training sites across the State of Georgia. These diverse and expansive opportunities ensure our students are exceptionally prepared to meet the challenges of an ever-changing healthcare environment. Our students are engaged within our classes, local communities, state societies and beyond. Additionally, students receive a vast array of support services to ensure individual student success. Regardless of your main campus selection or your chosen field of medicine, the Medical College of Georgia will have you practice ready and ensure your overall success as evidenced by our consistently outstanding annual class match rate performance, which culminated with the Class of 2023 match rate of 99%!

Each year, MCG receives thousands applications from qualified and exceptional students. The mission of the admissions committee is to seat the best possible class of future physicians who fit the mission of MCG and who will meet the growing healthcare needs of our diverse state and beyond. We conduct a holistic review of each candidate and seek students who are not only academically strong, but who demonstrate compassion, resilience, empathy, intellectual curiosity, leadership and a true desire to serve and uphold the highest ethical and moral standards of the medical profession. We strive for equity in our admissions process. Our admissions committee does not conduct interviews and all interviewers are blinded to the applicant's file and all other interview assessments. We expect each and every graduate to serve as a leader in healthcare profession and be an ambassador for both MCG and the approximately 9,000 living alumni.

As a Georgia native and graduate of the Medical College of Georgia for both my medical education and residency training in Obstetrics and Gynecology, I am proud to call the Medical College of Georgia home. It is our hope that you too will find a home at the Medical College of Georgia.

All the best,

Kelli M. Braun, MD

Kelli M. Braun, '04, MD, FACOG

Senior Associate Dean for Admissions | Professor, Director of Simulation and Virtual Education, Obstetrics and Gynecology



STATEWIDE IMPACT

One MCG

As the state's only public medical school, statewide growth of medical education is a priority at the Medical College of Georgia (MCG). Our expansive and largely rural state is among the top 10 states in the nation for population size and growth; yet, according to the most current State Physician Workforce Profile from the Association of American Medical Colleges (AAMC), the state of Georgia ranks 39th in the number of active physicians per 100,000 population. The physician shortage is exacerbated by the reality that, like the general population, Georgia's physicians are aging with the state ranking 32nd in the percentage of active physicians age 60 and older.

To help address the need for more doctors, in 2006 the AAMC called for a 30% increase in medical school enrollment. In January 2008, the University System of Georgia Board of Regents accepted a medical education expansion plan which included opening the four-year Augusta University / University of Georgia Medical Partnership campus in Athens, GA. The first 40 freshman students started at the AU/UGA Medical Partnership in fall 2010, enabling growth of MCG's class size from 190 to 230 students.

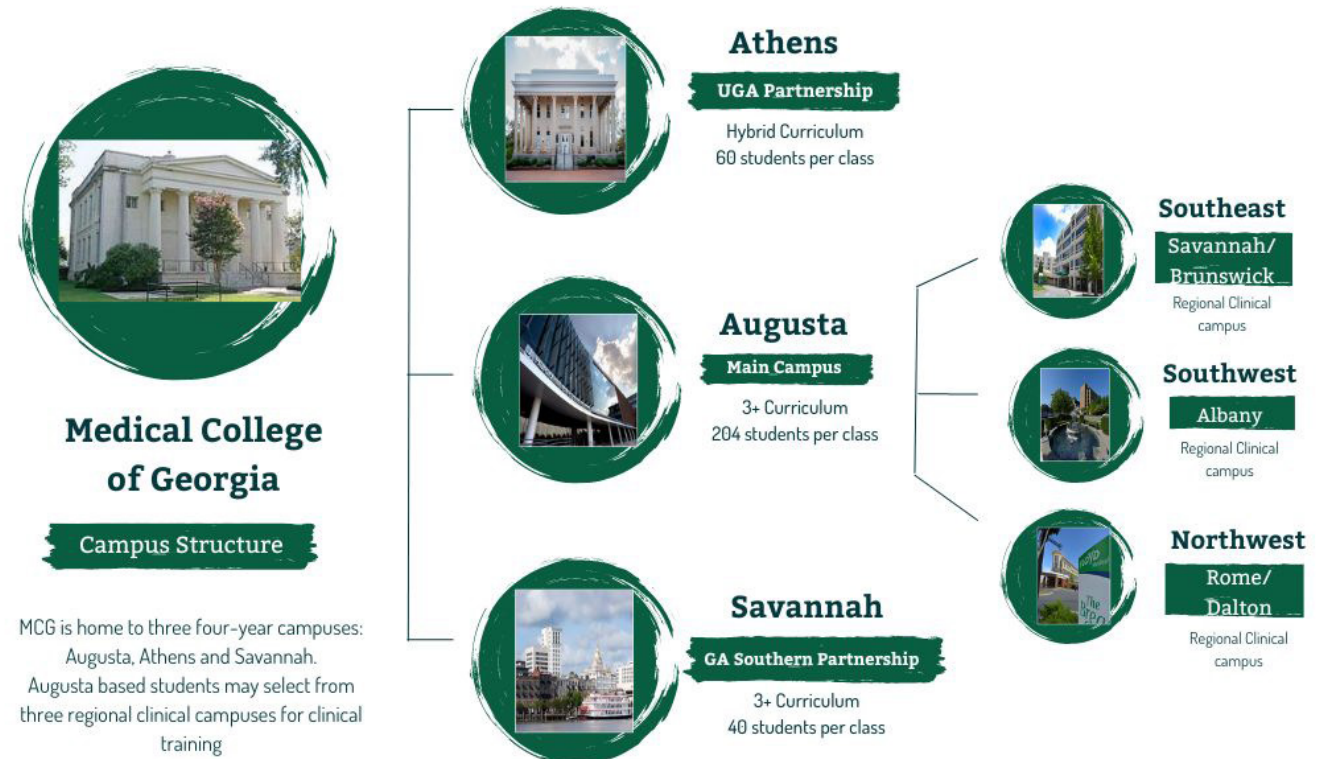
The AU/UGA Medical Partnership grew from 40 to 50 students per class in 2020 and increased to 60 in 2021. The medical school, already one of the largest class sizes in the country, also grew the class size at

the main campus in Augusta, from 190 to 200 students per class that same year. In 2024, MCG will once again expand its statewide impact by opening another full four-year campus in Savannah. Located on the Armstrong campus of Georgia Southern University campus, MCG's third four-year campus will house 40 students per class, bringing total MCG enrollment to 304 students per entering class.

MCG continues to demonstrate its commitment to improving the healthcare of Georgians. Expanding partnerships with physicians and hospitals throughout Georgia ensures all MCG students, irrespective of campus location, will experience the full spectrum of medicine, from urban tertiary care hospitals to small-town primary care practices.

In 2005, MCG opened its first regional campus in Southwest Georgia. The Southwest Campus is based at Phoebe Putney Memorial Hospital in Albany and is strategically located in a relatively rural area of the state where physician shortages are most acute. In 2007, MCG announced the Southeast Campus, which is now based at St. Joseph's/Candler Health System in Savannah and the Southeast Georgia Health System in Brunswick. Later in 2010, officials from Rome, GA, and Augusta University announced establishment of the Northwest Campus, which became operational in 2013. Today, we are one MCG with diverse educational and clinical experiences in more than 350 urban and rural sites across the state of Georgia.

ONE MCG, ONE MISSION, MANY CAMPUSES





MCG CURRICULUM

Overview

The Medical College of Georgia (MCG) curriculum has undergone an extensive review with revolutionary changes as MCG continues to lead Georgia in graduating well-educated physicians in the new era of health care reform. The current curriculum is broad-based and designed to foster the attitudes, behaviors, knowledge, and skills necessary to succeed in any chosen field of medicine. To accommodate various learning styles, MCG offers two curricular tracks: The 3+ Curriculum at the Augusta and Savannah campuses and the 'Parallel' Hybrid Curriculum at the AU/UGA Partnership Campus (both described below). Both options are patient-centered and enhance foundational knowledge through experiential learning. MCG students engage in early clinical experiences and develop self-motivated learning through a variety of small and large group activities which strengthen the integration of the basic and clinical sciences. Students have access to the most current technology in medical education throughout their training. Point-of-care ultrasound has been incorporated throughout all four years of medical school to ensure students are ready to use this technology that may one day be as common as a stethoscope. In addition, through the availability of state-of-the-art simulation centers housed at both the Augusta and Athens campuses, patient oriented simulation is incorporated throughout the medical school experience. While delivery of curricular content varies by campus, the ultimate destination is the same: prepare our students to be practice ready upon graduation.

3+ Curriculum (Augusta and Savannah Campus) consists of three phases and an Enrichment Phase:

- 1. Pre-clerkship curriculum** (18 months)
- 2. Clerkship curriculum** (nine months) consisting of seven core clerkships (Internal Medicine, Family Medicine, Surgery, Obstetrics/Gynecology, Pediatrics, Neurology, Psychiatry)
- 3. Advanced Clerkship Phase** (nine months) including Emergency medicine, Ambulatory Medicine, Critical Care, electives/selectives)
- 4. (+) Enrichment phase** which consists of one of four pathways, please see description under enrichment phase. (12 months)

AUGUSTA & SAVANNAH CAMPUS ACADEMIC CALENDARS

PRE-CLERKSHIP – FALL 2023 SEMESTER

July 24, 2023	First Day of Class
September 4, 2023	Labor Day
November 22-24, 2023	Thanksgiving Vacation
December 15, 2023	Last Day of Classes

PRE-CLERKSHIP – SPRING 2024 SEMESTER

January 2, 2024	First Day of Classes
January 15, 2024	MLK Holiday
April 1-5, 2024	Spring Break
May 27, 2024	Memorial Day
June 19, 2024	Juneteenth
June 21, 2024	Last Day of Spring Semester

PRE-CLERKSHIP – FALL 2024 SEMESTER

July 8, 2024	First Day of Classes
September 2, 2024	Labor Day
November 27-29, 2024	Thanksgiving Vacation
December 13, 2024	Last Day of Classes

ATHENS CAMPUS ACADEMIC CALENDAR

YEARS 1 & 2 – FALL 2023 SEMESTER

July 31, 2023	First Day of Class
September 4, 2023	Labor Day
November 22-24, 2023	Thanksgiving Holiday
December 8, 2023	Last Day of Classes

YEARS 1 & 2 – SPRING 2024 SEMESTER

January 2, 2024	First Day of Classes
January 15, 2024	MLK Holiday
March 4-8, 2024	Spring Break
May 10, 2024	Last Day of Classes

Pre-Clerkship Curriculum: (Augusta and Savannah)

During the eighteen-month Pre-clerkship Curriculum students acquire foundational science knowledge along with skills required for clinical decision-making and patient care. The integrated, clinical case-based pre-clerkship curriculum consists of thirteen modules and courses that include large and small group learning, laboratories (anatomy, simulation, ultrasound), and clinical skills sessions that utilize both standardized patient and real patient encounters. Weekly clinical cases are the cornerstone of the curriculum which are used to facilitate learning of foundational basic science content, clinical care, public health and advocacy, professionalism, ethics, cultural competency, evidence-based medicine, and value-based healthcare. At the conclusion of this Pre-clerkship Curriculum, students will be equipped with the necessary knowledge, skills, behaviors, and attitudes to successfully perform in the Clerkship phase of the curriculum. Grading is pass/fail in the Pre-Clerkship Curriculum and passing the USMLE Step-1 is a requirement for promotion to or successful completion of the Clerkship Curriculum. Teaching strategies include interactive small group learning, which includes Case-based learning (CBL), and Patient-Centered Learning (PCL), preceptor relationships (You+ Learning), and Large Group lectures that are linked to course objectives (described below).

Case-Based Learning

Case-based Learning (CBL) provides an opportunity for Pre-clerkship students to work in small groups to discuss real patient cases under the direction of clinical and foundational science educators and learn how to develop broad differential diagnoses, discuss pertinent positive and negative signs and symptoms, and develop a management plan.

Patient-Centered Learning:

Patient-Centered Learning (PCL) is a hands-on, clinical skills longitudinal course that develops students' skills including history-taking, performing a physical exam, and working as a team to manage patients. Hands-on activities include high-fidelity simulations, standardized patient encounters, and workshops, with each week being integrated with CBL module content.

You+ Learning course:

You + learning course is a Pre-clerkship course that is designed to help prepare students for their role as a physician maximizing learning related to professional identity formation. The core pillars of this course are: 1. Ethics, 2. Leadership, and 3. Health, equity, and justice.

Large Group Sessions:

Large group sessions include lectures, team-based learning (TBL), labs, and panels to provide foundational knowledge in preparation for the clerkships.

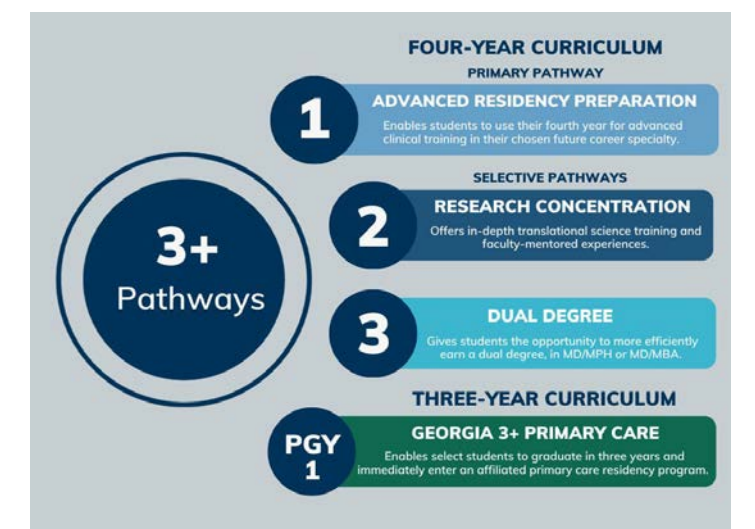
(+) Enrichment phase:

1. Advanced Residency Preparation (Residency Jump start) pathway offers the option to complete the core curriculum in three years, then utilize the fourth year to participate in career-oriented advanced clinical training and research, through a focus on the skills and competencies essential to their desired residency program. This pathway also offers the opportunity to engage in away elective options.

2. Dual Degree Pathway offers the option to complete the core curriculum in three years, then obtain a dual degree either in business (MBA) or public health (MPH) at Augusta University in their fourth year of study to prepare students for careers in academic medicine. Students interested in this pathway will undergo an application and selection process. Currently the MPH program is online and the MBA program is in person on the Augusta campus.

3. Advanced Research Pathway offers the option of rigorous research with faculty mentor support and guidance. Students will be required to complete a scholarly project in addition to the research project, and must also complete the advanced clerkship phase, and six weeks of electives. Students will be required to present a poster at Research Day in the graduating year and give a final presentation to their mentor, research team, and curriculum faculty.

4. PGY1-Pathway (3+ primary care residency pathway) offers the option for students to enter primary care residencies and become primary care doctors for rural and underserved areas in Georgia at an accelerated pace. The 3+ Primary Care Pathway students graduate in three years and immediately enter a residency in either family medicine, internal medicine, pediatrics, psychiatry, emergency medicine, obstetrics and gynecology or general surgery.





Hybrid Curriculum (AU/UGA Medical Partnership)

With a class size of 60, the AU/UGA Medical Partnership students can work closely and easily access both basic and clinical science faculty. Working in small groups of four to eight students for the majority of class time helps foster teamwork. First- and second-year students study basic and clinical science in a hybrid curriculum that makes extensive use of small group learning, supplemented by large group interactive sessions. Previous department-based courses such as biochemistry, physiology and microbiology are integrated and presented in the context of clinical cases to encourage a more logical sequence of learning and to highlight the clinical relevance of the basic sciences. Clinical skills and other Patient Centered Learning curricular threads are woven together each week with the rest of the curriculum to form one integrated course. This helps students learn in a context that more directly applies to how they will care for patients. Medical Partnership students have access to both AU and UGA resources and are able to utilize all study facilities available at the UGA Tate Center and Miller Learning Center.

DUAL DEGREES

MD/MBA, MD/MPH

Augusta University is enhancing the educational opportunities for medical students through the development of dual degree programs and areas of concentration. These educational possibilities expand the academic diversity of our physician graduates who will enter the work force. Students choosing the option of a dual degree program will receive the MD/MBA, MD/MPH, MD/MEd and MD/MCTS degree in the 4th year of study. Applications for Dual Degree programs are available after matriculation into the MD program.

The Medical Partnership campus also offers the opportunity to complete an MD/MBA with the UGA Terry College of Business or an MD/MPH with the UGA College of Public Health. For more information about obtaining additional degrees through the partnership with UGA, see the Medical Partnership website.

MD/PHD

The University System of Georgia MD/PhD Program trains students in the research and clinical skills that will enable graduates to translate research findings into clinical outcomes.

The synergy created between the outstanding clinical environment of the Medical College of Georgia at Augusta University and an uncommon breadth and depth of nationally ranked PhD programs is what makes this a truly unique educational experience. This seven to eight-year program prepares a diverse group of students who have a passion for medical research and a dedication to serving others for rewarding careers in biomedical research or in academic medicine.

Our highly-personalized program was founded in 1995 and our graduates have become faculty members and are pursuing academic careers at The Mayo Clinic, Emory University, Yale University and the National Institutes of Health. Others are completing residencies or fellowships at Yale University, Stanford University, Emory Healthcare, Johns Hopkins Hospital, Augusta University Health System and other prestigious institutions. Training in our program unlocks doors at the top academic medical centers in the nation.

As a trainee in the MD/PhD program, you will hold the title of J. Harold Harrison Medical Research Scholar, reflecting the endowment of the program by the prominent vascular surgeon and MCG graduate who funded the program with a gift in 2013. This endowment supports your entire training experience, including a graduate stipend, full tuition waiver and most associated fees, mitigating most student debt from your medical training.

Unlike many MD/PhD programs, which adhere to a fixed entry schedule, our curriculum offers greater flexibility which allows students to enter at various stages of their medical education, called FLEX entry. Matriculation into the MD/PhD program can occur at any time during the pre-clerkship education and FLEX entrants receive the same stipend and tuition benefits as traditional program entrants.

Another unique aspect of our program is that your options for thesis research are wider than Augusta University. The MD/PhD program partners with any state university in Georgia, opening up research like genetics or virology at the University of Georgia or bioengineering and bioinformatics at the Georgia Institute of Technology. The PhD degree awarded will reflect the institution in which it is obtained and maximizes the kind of research you can combine with your medical degree from MCG.

Taken together, the range and extent of options available in MCG MD/PhD program can place you on any professional path you choose. We look forward to welcoming you on board!





Clerkships & Clinical Enrichment

Clerkships

Patient contact begins pre-clerkship. Clerkships consists of required core clerkships in:

- Emergency Medicine
- Internal Medicine
- Neurology
- Obstetrics/Gynecology
- Pediatrics
- Psychiatry
- Surgery

Clinical Enrichment

Students also participate in a series of clinical enrichment activities in:

- Critical Care
- Adult Ambulatory Medicine
- An Acting Internship
- Elective Study

*Full course schedule subject to change. For more information visit augusta.edu/curriculum

Main Campus - Augusta

Core clerkships take place at the AU Health System, the Children’s Hospital of Georgia, the regional campuses, and various affiliated hospitals and community-based teaching sites throughout the state. Students may rotate to affiliated community hospitals for part of the core curriculum.

In the clerkship enrichment phase, students must complete four-week rotations in emergency medicine, critical care, adult ambulatory medicine, and an acting internship in either family medicine, neurology, medicine, pediatrics, surgery, or obstetrics and gynecology. Elective study can include both clinical and research courses. In addition to passing USMLE Step 2 CK and CS, students must complete a total of four, four-week electives to fulfill the requirements for graduation.



RESEARCH

augusta.edu/research

Scientific discovery is the essence of progress in health-related science and the hope in medicine for uncovering the unknown to identify treatments and cures to human disease. Medical student scholarship at the Medical College of Georgia offers the opportunity for all medical students in good academic standing to become engaged in a scholarly project, in close mentorship with faculty who are nationally and internationally distinguished scientists, clinicians, and academic scholars. An array of scholarship opportunities is available, including basic and biomedical laboratory research, clinical and translational research, community/global health research, and medical education research. Students typically engage a research effort at Augusta University or the University of Georgia, although efforts at outside institutions is possible – for example, students have completed research internships at Emory University, the National Institutes of Health, Duke University, Boston Children’s Hospital and Memorial Sloan Kettering Cancer Center, among many others. Held each academic year, the Medical College of Georgia’s Medical Scholars Research Day and the AU/UGA Medical Partnership campus’s Student & Resident Research Symposium offers the occasion for students to present their research/scholarship findings to fellow students, faculty, and colleagues. MCG currently has ~\$186 million in total grants and contracts of which nearly \$57 million in funding received from the National Institutes of Health. Currently, six Georgia Research Alliance Eminent Scholars are leading extraordinary research and development programs at the Medical College of Georgia.

Approximately
75% of
MCG students
participate
in research.

REGIONAL CLINICAL CAMPUSES

Southwest Campus

augusta.edu/mcg/expansion/southwest

The MCG Southwest Campus Suite is conveniently located at 1000 North Jefferson Street, Albany, GA, directly across the street from Phoebe Putney Memorial Hospital. The space includes offices for the campus administration and staff, student study stations, as well as a conference room and classroom for video conference links to Augusta and around the state. The UGA College of Pharmacy shares space in this education center, offering students an opportunity for formal and informal interprofessional growth. MCG students have free access to Phoebe's state-of-the-art health and fitness center, HealthWorks, also located in the same building.

Phoebe Putney Memorial Hospital in Albany, Ga. is the main hub for clinical sites for the Southwest Campus. Established in 1911, Phoebe Putney is a 691-bed tertiary referral medical center that serves almost 400,000 people from southwest Georgia. More than 300 affiliated doctors and 4,000 staff at Phoebe Putney deliver world-class healing and prevention to the southwest region of the state. Phoebe Health System has grown to include hospitals in Americus, Sylvester, and Cuthbert.

Phoebe Family Medicine Residency serves as the backbone for primary care clinical experience in Albany.

Southwest Campus hospital partners include:

- Coffee Regional Medical Center, Douglas
- Colquitt Regional Medical Center, Moultrie
- Crisp Regional Hospital, Cordele
- Greenleaf Center, Valdosta
- Greenleaf Hospital, Valdosta
- John D. Archbold Memorial Hospital, Thomasville
- Memorial Hospital and Manor, Bainbridge
- Miller County Hospital, Colquitt
- Phoebe Putney Memorial Hospital, Albany
- Phoebe Sumter Medical Center, Americus
- Piedmont Columbus Regional Hospital, Columbus
- Roosevelt Warm Springs Rehabilitation & Specialty Hospitals, Warm Springs
- South Georgia Medical Center, Valdosta
- St. Francis Hospital, Columbus
- Tift Regional Medical Center, Tifton
- West Georgia Medical Center, LaGrange

Clinical Rotations

The Southwest Campus offers a comprehensive catalogue of three- to six-week clinical clerkships, based at one of the hospital partners or at private practices of clinical faculty.

Unique to the Southwest Campus, students here can elect to follow the traditional clerkship model—a series of 3 or 6 week clerkships—or the innovative Longitudinal Integrated Clerkship (LIC).

The SW LIC offers:

- integration of neuro and psych across 6 weeks,
- 3 week “sessions” of the Surgery, Internal Medicine, OBGYN, and Pediatrics clerkships (first half and second half of clerkship year)
- Weekly Family Medicine clinic for a longitudinal exposure to a primary care experience that helps to integrate all the clerkship disciplines.
- 2 week Health Policy Elective at the beginning of the clerkship year, offering students a practical experience at communicating policy positions effectively as well as an immersion opportunity to the SW Georgia community.

With the addition of 12 weeks of elective time to the clerkship experience, Southwest Campus students have first choice from an amazing menu of opportunities to expand their clinical experience-- from specialty rotations, to health policy studies, to basic science or clinical research.

Also unique to the SW Campus, students are afforded the opportunity to participate in the AHEC Scholars Program, a two-year interprofessional development experience shared with UGA Pharmacy students, medical students from PCOM South, along with nursing students from Georgia Southwestern University and Albany State University.

Clinical Rotation offerings on the SW Campus include:

- Anesthesiology
- Cardiology
- Cardiothoracic Surgery
- Critical Care (Adult and Neonatal)
- Critical Care (IPE with UGA Pharmacy Faculty)
- Dermatology
- Emergency Medicine
- Family Medicine
- General Surgery
- Hematology/Oncology
- Internal Medicine
- Neurology
- Neurosurgery
- Obstetrics and Gynecology
- Orthopedics
- Otolaryngology
- Palliative Care
- Pediatrics
- Psychiatry
- Pulmonology
- Radiation Oncology
- Radiology
- Sports Medicine
- Surgical Oncology
- Urology

Flagstone at Phoebe

Completed in Spring 2017, these beautiful and modern apartment homes for healthcare professionals-in-training feature 40 beds and 26 apartments (a mixture of studio, one bedroom, two bedroom, and three bedroom units). Tenants arrive to a gated and beautifully landscaped property and will first notice the outdoor grill, dining and seating area complete with an outdoor fireplace. Inside the common area, you'll find a large-screen television, two private study/conference rooms and additional dining space. Each apartment is furnished with a queen bedroom set, stainless kitchen appliances, an in-room washer and dryer and living room furniture as well as a television in each living room, cable hookup in each bedroom and wireless internet throughout the building. Apartments feature a spacious closet, plenty of natural light and unique architectural touches. Flagstone is located just one block from the Phoebe Putney Memorial Hospital main campus and is across the street from the MCG Southwest Campus offices as well as HealthWorks – the Phoebe fitness center. Tenants at Flagstone will feel safe and right at home in this gorgeous new facility – designed especially for the next generation of healthcare professionals.

The Community

Located on the banks of the Flint River, Albany-- dubbed “The Good Life City”-- has something for everyone. With a population of approximately 100,000, Albany is enjoying an emerging downtown revival, serving up an abundance of outdoor activities and cultural offerings including:

- Riverquarium
- Parks at Chehaw
- Providence Canyon, part of Georgia State Parks
- Kayaking the Flint River Shoals
- Hiking, biking, and running trails
- Jimmy Carter National Historic Site (Plains, GA)
- Albany Museum of Art
- Albany Civil Rights Institute
- Albany Symphony
- Theatre Albany

MCG students on the Southwest Campus can strike a healthy balance between their very busy clinical experiences and the relaxing environment provided in communities where traffic jams do not exist and healthy distractions are everywhere. Most importantly MCG students experience “real world” medicine as it is delivered by the army of volunteer physician educators who practice in small and rural communities across Southwest Georgia.

Southeast Campus

augusta.edu/mcg/expansion/southeast

The Southeast Campus is comprised of 9 hospital systems.

- St. Joseph's/Candler Health System, Savannah
- Southeast Georgia Health System, Brunswick
- Memorial Health System, Savannah
- Southeast Georgia Health System, St. Mary's
- East Georgia Regional Medical Center, Statesboro
- Winn Army Medical Center, Ft. Stewart
- Meadows Regional Medical Center, Vidalia
- Mayo/Satilla Medical Center, Waycross
- Warner Robins Air Force Base Health Center, Warner Robins

Clinical Rotations

St. Joseph's/Candler Health System in Savannah and Southeast Georgia Health System in Brunswick serve as administrative sites where MCG students can acquire extensive hands-on experience during rotations in:

- Emergency Medicine
- Family Medicine
- Internal Medicine
- Obstetrics and Gynecology
- Orthopedics
- Pediatrics Neurology
- Psychiatry
- Surgery

St. Joseph's/Candler Health System in Savannah provides an administrative hub for the Assistant Dean for Curriculum and the Clinical Rotation Coordinator so that students can receive additional academic support while completing their clinical rotations in the area.

The East Georgia Regional Medical Center in Statesboro has clinical rotations for students in obstetrics and gynecology and internal medicine/ ambulatory care. Additional clinical rotations in Family Medicine are available in Waycross, Blackshear, and Jesup.

The Community

Savannah, Brunswick, Statesboro and the surrounding rural communities that comprise the 35-county region of the Southeast Campus offer a variety of opportunities for students completing their clinical rotations in their third and fourth years of medical school. The communities are historically rich, environmentally engaged and student-friendly. Each of the hospitals support student training by offering housing in each of the communities at no cost to the students in order to minimize the financial burdens and enrich the learning experiences. Students are frequently invited to join their clinical preceptors in community functions, medical staff meetings, and professional development training.

Beaches and state parks are abundant in southeast Georgia. St. Simon's Island and Jekyll Island are within minutes of Southeast Georgia Health System in Brunswick and offer public access to the beaches for swimming, biking, kayaking, and sailing as well as learning more about marine life.

Northwest Campus

The northwest campus is based in Rome and Dalton, Georgia. With ten students living in the Rome area, and another six living and working in the Dalton area, the NW Campus offers a Longitudinal Integrated Clerkship experience. This means students work alongside physicians in Family Medicine, Internal Medicine, Pediatrics, Psychiatry, and Neurology all year long, with more intensive immersions in Surgery and OB/GYN. The resultant schedule allows students to follow patients during their year of clinical experience, including throughout phases of comprehensive cancer treatment and pregnancy.

With access to the largest per capita population of physicians in the state, the campus emphasizes interprofessional learning and a technologically advanced team approach to health care.

The Northwest Campus office is situated in the historic James D. Maddox Heritage Hall building of Georgia Highlands College. For ambulatory patient visits, students work in private physician offices, as well as the Harbin Clinic, the largest physician-owned multispecialty practice in Georgia.

Inpatient teaching is centrally located between two proximal hospitals in Rome: AdventHealth Redmond and Atrium Health Floyd. Redmond is a 230-bed acute care facility with 28 ICU and 12 CCU beds and is the provider of cardiothoracic surgery in northwest Georgia. Redmond has Internal Medicine and Transitional Year residents with whom students work. Floyd is a private, not-for-profit 304-bed with a Level III NICU and Level II Trauma Center that sponsors one of the first established Family Medicine residencies in the state.

In the Dalton area students work with physicians at the Hamilton Health Care System. Hamilton Medical Center is a 282-bed regional acute care hospital that offers all services including open heart surgery. Hamilton also sponsors residencies in Internal Medicine and Family Medicine. Hamilton also has the only comprehensive pediatric institute in the state that focuses on developmental delays and behavioral issues. The Anna Shaw Children's Institute is part of the student's pediatric clinical experience.

The Community

The northwest Georgia community includes the urban areas of Rome, Dalton, Cartersville and Calhoun as well as the more rural communities of Cedartown, Adairsville and Armuchee. These sites are only a short drive from downtown Rome. Rome is home to four colleges: Berry College, Georgia Highlands, Shorter College, and Georgia Northwestern Technical College. As home to minor league baseball team, Rome Braves (owned by the Atlanta Braves), NCAA football, the oldest symphony in the state, and an international film festival, Rome boasts a vibrant social, arts, and recreation scene.

augusta.edu/mcg/expansion/northwest



PROFESSIONAL SCHOLARS PROGRAM

augusta.edu/mcg/admissions

General Information

The mission of the Augusta University/Medical College of Georgia Professional Scholars program is to optimally prepare students for a career in medicine. This is an accelerated program where students complete coursework for their BS degree in three years and requirements for the MD degree in four years.

Students accepted into the selective Professional Scholars program will pursue a pathway for baccalaureate study in the College of Science and Mathematics with a BS in Cell and Molecular Biology through the Department of Biological Sciences.

Through mentoring, early clinical and research exposure, as well as personal and professional enrichment experiences, the comprehensive curriculum provides students with a solid and unique undergraduate foundation and prepares them to emerge from the Medical College of Georgia as leaders in the field of medicine.

Eligible freshmen who are admitted to AU and desire to pursue medical education will have assured admission to the Medical College of Georgia provided they meet, and continue to meet, all the requirements of the program.

Minimum Requirements

- High School GPA of 3.7 or above
- SAT score of 1460 (Evidence-Based Reading and Writing and Math sections) or ACT Composite score of 32
- Supplemental Application
- One Letter of Recommendation

Continued Requirements

Additional requirements of students in the BS/ MD program include successful completion of an interview following the third year of study, maintaining a cumulative and science + math GPA of 3.6, 3.6, and 3.7 at the end of the first, second, and third year respectively, completing 75 hours of clinical service in a medical facility by October 31st of the third year, complete 50 volunteer/leadership hours and achieving a minimum score of no less than the prior year's national mean for medical school matriculants on the MCAT. The MCAT must be taken no later than September 30th of the third year. A valid CASPer score is also required. Due to the nature of the curriculum all courses are to be taken during the fall and spring semesters of the academic year. Students enrolled in the Professional Scholars program do not have the option to take courses out of sequence, repeat courses, or take courses at another institution during the summer.

Please note requirements are subject to change. For updated requirements, please visit: augusta.edu/admissions.

augusta.edu/admissions/professionalscholars.php
Academic Admissions 706-737-1632

STUDENT SUPPORT

Office of Student Affairs

Augusta 706-721-2522 | Athens 706-713-2184 | Savannah

augusta.edu/mcg/students/aboutus

Augusta

The Office of Student Affairs touches the life of every medical student from recruitment to graduation and beyond. Its mission includes building community by offering a strong infrastructure of innovative student services, programs, and resources. The Office of Learner Affairs seeks to assist each student in achieving his/her highest potential and provides education, counsel, and advice to transform a diverse group of students into culturally competent, empathic, patient-centered, and ethical physicians. The office oversees the progress of students throughout their medical school years, informed by policies of the university, the Liaison Committee for Medical Education and the Association of American Medical Colleges. The office includes the Associate Dean for Student Affairs, a Dean for each phase of the curriculum, Assistant Dean for Academic Advising, an Assistant Dean for Career Advising, an Associate and Assistant Dean for Student Diversity and Inclusion, an Associate Dean for Student Well-being, and administrative personnel.

The office is committed to:

- Fostering a diverse, inclusive, and student-centered community
- Advocating for student needs, both individually and collectively
- Respecting the individuality of each student
- Listening to student concerns and partnering to find solutions
- Being available, accessible, and responsive
- Being accurate and current with programming and advising
- Being transparent and fair about policies and expectations of students
- Protecting confidentiality

Class Deans

At the Medical College of Georgia, there is a Student Affairs Dean responsible for each phase of the curriculum. We have a matriculating dean who ushers students through the first semester of medical school; a dean responsible for students during the remainder of the pre-clerkship curriculum; a clerkship year dean; and a dean for the enrichment phase. Each dean is well-versed in the specific needs of his or her part of the curriculum, and the open communication among deans allows for seamless transition for students from one phase to the next.

Academic Advising

Students are assigned a longitudinal Academic Advisor who supports each student's academic needs from matriculation to graduation. Students meet with their academic advisor quarterly for the first 18 months and then once every semester until graduation. It is our goal to meet students where they are, thus, we also offer one-on-one, small group, and large group study skills sessions with a trained learning specialist. Peer and near peer tutoring services are available for all students.

Career Advising

Students are assigned a longitudinal Career Advisor at the time of matriculation to medical school based on Learning Community assignment, and their advisor supports them through the steps of choosing a career. Our advisors are diverse, represent a wide range of specialties, and provide individualized attention to the students' needs. Through a series of one-on-one meetings during the first 2 years of the curriculum they help guide students through the self-exploration necessary to choosing a satisfying specialty, ensure students know about all career options so they can make a well-informed decision, and coach students to resources necessary to be successful. Students may request continued meetings even after a subspecialty has been declared and a subspecialty career advisor has been identified. The career advising program also offers participation in AAMC Careers in Medicine program, quarterly virtual career panels, ways to engage in and track completion of career exploration activities in medical, surgical, and ancillary specialties, and completion of a curriculum vitae.

Student Well-Being

The Office of Student Well-being serves students across the UME/GME continuum. Our services are designed to meet the needs of medical students, residents, and fellows. We are committed to enhancing patient care and welfare and believe that optimal care requires an environment where all learners and healthcare providers can thrive, feel support and well treated. Support services for emotional, physical, spiritual, and financial well-being are provided. MCG takes student wellness very seriously and requires students to complete wellness activities each semester. Additionally, the Office of Student Well-being provides monthly well-being events for students which are planned in concert with the Vice Presidents for Wellness on each class's executive board.

Student Diversity, Equity, and Inclusion

The MCG Office of Student Diversity, Equity, and Inclusion seeks to provide and lead initiatives that reflect the vision and mission of the Medical College of Georgia at Augusta University, which is to create a diverse health care workforce that reflects and addresses the health needs of Georgia and ultimately the entire United States. While seeking this mission, we are working hard to break down walls as well as resist paradigms in which religion, race, creed, ability, gender, age, sexual orientation, zip code, or bank accounts have any impact on the quality of one's educational experience or patient care.



Our office provides multiple levels of programming and support. Every summer we host the Student Educational Enrichment Program and the Pre-Matriculation Program. We support student organizations dedicated to the mission of Diversity, Equity, and Inclusion (Student National Medical Association, Latino Medical Student Association, Black Men of MCG, Korean American Medical Student Association, Junior Medical League, the Minority Association of Premedical Students, and the MCG MCAT and Outreach Mentorship Program). We also optimize diversity and cultural sensitivity by both reviewing existing curricular content for biases and creating new content. And within the healthcare system, we provide resident, fellow, and faculty training in Microaggressions, Unconscious Biases, and Health Equity. Additionally, we foster community engagement and partnerships focused on reducing factors associated with health care disparities.

The ultimate goal of the MCG Office of Student Diversity, Equity, and Inclusion is to create a learning environment throughout all of our campuses where all students feel welcome, important, respected, encouraged, and supported.

Office of Student and Multicultural Affairs

AU/UGA Medical Partnership

The Office of Student and Multicultural Affairs (OSMA) at the Athens campus includes the Campus Associate Dean of Student and Multicultural Affairs and administrative personnel, who offer an array of support services for medical students, including academic support, personal and career counseling, referrals, and leadership skills development. The mission of the office is to assist each student in his/her academic, personal and professional development from first year to graduation in reaching his/her ultimate aspirations in health care. Together with the Office of Curriculum, OSMA oversees the academic and professional progress of every student, offering proactive, student-centered and timely support, in accordance with the guidelines and policies of the university, the LCME and the AAMC.

The OSMA works closely with the Office of Curriculum to develop individual learning and group learning strategies delivered throughout the year. Recognizing the challenges of the medical school curriculum, the OSMA has developed a proactive plan to support academic success that includes a partnership with the UGA Health Center to offer wellness and stress management seminars. The Office of Student and Multicultural Affairs maintains a student calendar of events, oversees faculty advisors, facilitates interest groups and involvement with community service projects and supports student government, peer mentors, and student ambassadors.

The OSMA values include:

- Respecting each student's unique needs
- Promoting an inclusive and diverse environment
- Offering services in a responsive and timely manner with compassion and empathy
- Serving as a student advocate both individually and collectively
- Protecting the confidentiality and rights of every student, and providing clear explanations of policies and expectations.



TRADITIONS & EVENTS

White Coat Ceremony

The White Coat Ceremony welcomes entering medical students and helps establish a psychological contract for the practice of medicine. The event, emphasizing compassionate patient care and scientific proficiency, includes the recitation of an Oath of Service and Responsibility representing public acknowledgment of the responsibilities of the profession and students' willingness to assume such obligations in the presence of family, friends, and faculty and cloaking of students in their first white coats.

At the ceremony, students are welcomed by their deans and other institutional leaders who represent the value system of the school and the new profession the students are about to enter. The cloaking with the white coat – the mantle of the medical profession– is a hands-on experience that underscores the bonding process. The coat is placed on each student's shoulders by individuals who believe in the student's ability to carry on the noble tradition of doctoring. It is a personally delivered gift of faith, confidence, and compassion.

Hooding

This annual rite formally acknowledges the medical students' achievement by administering the Hippocratic Oath and presenting the academic hood, which students wear during their Commencement Ceremony.

Match Day

The Match is the annual process where fourth-year medical students are matched through the National Resident Matching Program (NRMP) to residency programs across the nation.

In 2023, 99% of MCG's graduates matched in a residency position, exceeding the national average.

- Primary Care: 134
- Internal Medicine: 31
- Pediatrics: 28
- Family Medicine: 26
- General Surgery: 13
- Emergency Medicine: 12
- OB/GYN: 10
- Internal Medicine/Pediatrics: 2
- Pediatrics/Psych/Child Psychology: 1

Annual Raft Debate

MCG faculty members play their roles and make their case for survival based on their contributions to society. This insight helps teach sophomore and junior medical students the pros and cons of different medical specialties. Students leave the debate not only with a better understanding of the specialties but with a keener sense of direction. The evening includes a low-country boil and time for students to mingle with faculty and alumni. This event is sponsored by the Medical College of Georgia Alumni Association.

MCG's Got Talent

An annual show where students and faculty are invited to display their talents, including visual arts. The shows mission is to raise money to support local charities and showcase the outstanding talent of faculty and students.



STUDENT OPPORTUNITIES

A wide array of student organizations and campus activities provide students on the Augusta campus with the opportunity to find their niche and become an integral part of the MCG and AU families and the Augusta community.

Student-Run Clinics include:

- 8th Street Clinic
- Asian Clinic
- Clinica Latina
- Dermatology Clinic
- Equality Clinic
- Faith Care Clinic
- Free Mental Health Clinic
- MSK Clinic
- Pediatric Clinic
- PrEP Clinic
- Women's Clinic

Community & Service

- Mentoring Programs
- Junior Medical League
- Boys and Girls Club
- Health Equity & Access Leaders Program
- International Medical Mission Trips
- Student Government
- Class Liaisons
- National Medical Student Organizations
- Curriculum Oversight Committee
- Admissions Committee
- Admissions Tour Guide
- Admissions MMI Interviewer
- Intramural Sports
- Ultrasound Competition

Global Health Opportunities

The Medical College of Georgia has a variety of global health opportunities available throughout your medical career. Under the direction of Global Health Director Dr. Daniel Kaminstein students can engage in educational opportunities both on and off campus. These include a student-led Global Health Interest Group, the global health Area of Concentration, global health electives, and study abroad opportunities during the first year and fourth year. Students can participate in individually directed global health opportunities or join in faculty-led trips. You may visit augusta.edu/studyabroad for more information.

RESIDENCY & FELLOWSHIP PROGRAMS

ANESTHESIOLOGY AND PERIOPERATIVE MEDICINE

Anesthesiology Residency
Pain Medicine Fellowship
Anesthesiology Critical Care Fellowship
Pediatric Anesthesiology Fellowship

DERMATOLOGY

Dermatology Residency

EMERGENCY MEDICINE

Emergency Medicine Residency
Emergency Medical Services Fellowship
Pediatric Emergency Medicine Fellowship

FAMILY MEDICINE

Family Medicine Residency
Family Medicine Residency/Satilla Rural Program

MEDICINE

Cardiology Fellowship
Clinical Cardiac Electrophysiology Fellowship
Endocrinology Fellowship
Gastroenterology Fellowship
Hematology Oncology Fellowship
Infectious Diseases Fellowship
Interventional Cardiology Fellowship
Internal Medicine Residency
Nephrology Fellowship
Pulmonary Critical Care Fellowship
Rheumatology Fellowship

NEUROLOGY

Child Neurology Residency
Clinical Neurophysiology Fellowship
Neurology Residency
Vascular Neurology Fellowship

NEUROSURGERY

Neurosurgery Residency

OBSTETRICS & GYNECOLOGY

OBGYN Residency
Gynecological Oncology Fellowship
Reproductive Endocrinology and Infertility Fellowship

OPHTHALMOLOGY

Ophthalmology Residency

ORTHOPEDICS

Orthopedic Surgery Residency

OTOLARYNGOLOGY

Otolaryngology Residency

PATHOLOGY

Forensic Pathology Fellowship
Anatomic and Clinical Pathology Residency
Blood-Banking/Transfusion Medicine Fellowship

PEDIATRICS

Allergy/Immunology Fellowship
Pediatric Residency
Pediatric Cardiology Fellowship
Pediatrics Critical Care Medicine Fellowship
Neonatal-Perinatal Medicine Fellowship

PSYCHIATRY

Addiction Medicine Fellowship
Psychiatry Residency
Child and Adolescent Psychiatry Fellowship
Forensic Psychiatry Fellowship

RADIOLOGY

Diagnostic Radiology Residency
Interventional Radiology Integrated Residency
Neuroradiology Fellowship

SURGERY

Surgery Residency
Surgical Critical Care Fellowship

UROLOGY

Urology Residency

MCG and the AU Health System have 527 residents and fellows training in 51 ACGME approved residency training programs. 25% of MCG seniors will stay in Georgia for their first post-graduate year, 14% at an AU Health/MCG or MCG affiliated residency program, including the Medical Partnership programs in Athens and WellStar/Kennestone in Atlanta.



STUDENT LIFE AUGUSTA CAMPUS

The City of Augusta

Augusta's location along the Savannah River and balmy climate offer amazing opportunities for outdoor activities including sailing, fishing, tennis, and hiking. The Augusta Canal and North Augusta Greenway feature walking and biking trails that offer miles of scenic exercise, recreation, and relaxation. The nearby Lake Thurmond Reservoir is a popular site for waterskiing, swimming, boating, and camping. And did we mention golf? Augusta is world-renowned as the home of the Masters Tournament.

A wide array of cultural and recreational events includes First Fridays in downtown Augusta, the Westabou Festival, and Arts in the Heart of Augusta. A major mall, several large shopping centers, and hundreds of restaurants offer many options for shopping and dining. Augusta is located within an easy three-hour drive of Atlanta, Charlotte, NC, the mountains, and the Atlantic Ocean, allowing for great weekend getaways.

Campus Amenities

In addition to activities and events in the greater Augusta area, MCG students have access to a wide range of on-campus amenities. The Student Center houses the Wellness Center – an indoor fitness center with personal training, intramural sports and group exercise classes - as well as the bookstore, Student Government Association Office and The Atrium Food Court. MCG students also have access to the many recreational facilities on AU's nearby Summerville Campus.

All students have access to the Jaguar Express Transit System including passage on the City of Augusta transit busses. PassioGo, the AU transit app, allows students to view routes and track the Jaguar Express Transit busses.

Jaguar Express | 706-721-2953 | augusta.edu/parking

The Greeblatt Library

The Greenblatt Library maintains current journal subscriptions, electronic resources, online books, and provides access to many external databases. The library provides a mobile application for catalog and database searching, building access hours, as well as the full library website. Audiovisual learning aids are used in class and are available in the library. Grading is pass/fail in the first year. In years two through four, grading is A-F with a C constituting a passing grade. Passing the USMLE Step 1 is a requirement for promotion to the clerkship curriculum.

On-Campus Housing

The Office of Residence Life strives to create a positive residential community that supports the academic mission of the university. Residence Life provides programs, services and a diverse community environment that contributes to individual learning outside the classroom, fosters growth and development and encourages respect and responsible behavior. Residence Life manages on-campus housing for approximately 750 students.

For the student who lives on campus, there are a variety of living options for both single occupancy rooms and community apartment living. Students accepted for admission receive access to an online housing application.

Jaguar Express
706-721-2953
augusta.edu/parking

Office of Residence Life
706-721-3471
augusta.edu/housing



STUDENT LIFE ATHENS CAMPUS

The City of Athens

Home of the famed University of Georgia Bulldogs, Athens is a vibrant college town located in northeast Georgia. The AU/UGA Medical Partnership campus is housed on the UGA Health Sciences Campus on the medical corridor of Prince Avenue near downtown Athens in the Normaltown district. The 56-acre campus also houses the UGA College of Public Health.

Saturdays “between the hedges” have been a Georgia Bulldogs tradition since 1929 and are a southern collegiate tailgating and football experience not to be missed. All AU/UGA Medical Partnership students are eligible to apply for Georgia Bulldog football tickets. Though football is the most popular sporting event on campus, there are plenty of other exciting NCAA athletic events to choose from including gymnastics, swimming, tennis, and basketball.

Athens has a thriving music community and a notable music history as the starting point for such groups as the REM, the B-52s, and Widespread Panic. Downtown is alive with a variety of venues that offer entertainment suited to every musical preference. It is known internationally as the home of the Twilight Criterion bike race and is a summer destination for music lovers attending AthFest Music Festival. It is also well known for its variety of good food from creative, unique, and award-winning restaurants. Athens is home to the Georgia Museum of Art, the state’s official art museum, the State Botanical Gardens of Georgia, the Classic Center, the North Oconee River Greenway, and many other attractions. Atlanta, Augusta, and the North Georgia mountains can all be reached within an easy drive of two hours or less.

Campus Amenities

Students on the AU/UGA Medical Partnership campus have access to the student resources at the University of Georgia, including libraries, recreational sports facilities, cafeterias, the UGA Health Center and wellness programs. Toward enhancing student wellness an arrangement was made with UGA Counseling and Psychiatric Services to afford medical students priority in scheduling, elimination of short term treatment limitations and elimination of out of pocket co-pay costs.

Medical Partnership students also have access to major campus recreational facilities offering strength training equipment, exercise classes, and more. These include Pound Hall, satellite locations of the UGA Ramsey Center located on UGA’s Health Sciences Campus and the Ramsey Center on the main UGA campus. UGA boasts a wide variety of intramural sports that provide additional ways to stay active. AU/UGA Medical Partnership students have participated in soccer, basketball, flag football, and softball intramurals.

On-Campus Housing

Housing for medical partnership students is available on the UGA Health Sciences Campus. Each unit is a newly renovated, two-bedroom townhome that comes fully furnished, including a washer and dryer. It is a short, three-minute walk to classes at Russell Hall. Incoming students that are interested in living on campus should submit an application as soon as possible.

medicalpartnership.usg.edu.

UGA Housing

706-542-1421

housing.uga.edu/site/register

UGA Dining Services

706-542-1256

dining.uga.edu



Apply for admission online through the American Medical College Application Service aamc.org

APPLYING TO MCG

The Medical College of Georgia’s (MCG) 2023 incoming class of 264 students was selected from 3,335 applications. Admission is competitive and the decision of the admissions committee is final. The admissions committee conducts a holistic review of qualified applicants to admit a diverse class of medical students who will meet the mission of MCG, Augusta University and beyond. In addition to academic readiness, the admission committee considers individual experiences and attributes which include but are not limited to: clinical exposure, service, resilience, empathy, leadership and commitment to medicine. Legacy status does not affect interview or admission decisions.

There is no separate admissions process for the AU/UGA Medical Partnership campus or Southeast. All applicants applying through the Early Decision or Regular Decision program will complete one application through the American Medical College Applications Service (AMCAS).

Preference is given to Georgia residents and applicants with a baccalaureate degree from a regionally accredited* college prior to entering the Medical College of Georgia. The minimum requirement is 90 semester hours or 135 quarter hours. A limited number of highly competitive, non-degree applicants may be accepted each year. The non-degree college curriculum must be acceptable as the equivalent of the first three years leading to a bachelor’s degree from a regionally accredited* college or university. Applicants enrolled in a graduate degree program must complete all requirements of their graduate degree prior to matriculation. Students wishing to withdraw from a graduate course/program must receive prior approval from the Senior Associate Dean for Admissions. Withdrawal requests are granted on a case-by-case basis.

*Accredited by the appropriate regional agency for colleges and schools, i.e., the equivalent of the Southern Association of Colleges and Schools.

Georgia Residency

As the state’s only public medical school, preference is given to Georgia residents. Applicants offered admission as a Georgia resident are expected to maintain Georgia residency status in AMCAS records. Applicants who claim Georgia residency must make a claim on the AMCAS application no later than November 1. No residency changes are permitted after that date. Georgia residents who change their legal state of residence designation with AMCAS after being accepted will have their acceptance administratively withdrawn and their applications reviewed for admission as a non-resident of Georgia. Applicants may only be classified as residents of one state.

International Applicants

In order to be offered an interview, you must be either a U.S. citizen or a permanent resident of the U.S. with a valid, Permanent Resident Card. International applicants, as well as U.S. citizens, must have completed at least the last two years of their undergraduate or graduate education in a regionally accredited* U.S. or Canadian institution. All non-U.S. coursework must be evaluated by Josef A. Silny & Associates or World Education Services (WES), companies that offer foreign credential evaluation and translation. You should have a university and post-secondary course-by-course evaluation completed and sent directly from the Silny or WES office to the MCG Office of Admissions for review. For more information, including cost and evaluation timeline, please visit jsilny.org or wes.org.

*Accredited by the appropriate regional agency for colleges and schools, i.e., the equivalent of the Southern Association of Colleges and Schools. Check out the Council for Higher Education Accreditation for more information.

TWO PATHWAYS FOR ADMISSION

Early Decision Program

The Early Decision Program (EDP) at the Medical College of Georgia is only for Georgia residents. EDP applicants may not apply to any other institution until an admission action is made by MCG. Applicants applying through Early Decision will be notified of an admission action no later than October 1st. While not guaranteed, every effort is made to notify applicants of an Early Decision admission action in early September so that applicants may apply to other institutions if not accepted by MCG. Early Decision applicants must submit their AMCAS applications between May 29th and August 1st. All application materials, including official transcripts from all U.S. and Canadian postsecondary institutions attended must be received through AMCAS by August 1st to be considered for Early Decision. Transcripts must be submitted to AMCAS directly from the college's/ university's Registrar's office.

The MCG secondary application and all supplemental documents such as: proof of lawful presence in the U.S., required course information, Georgia residency documentation, and other specifically requested information, must be submitted one week after the secondary application is received. All required documents must be submitted by the final file deadline of August 15th.

Applicants for the Early Decision Program must have:

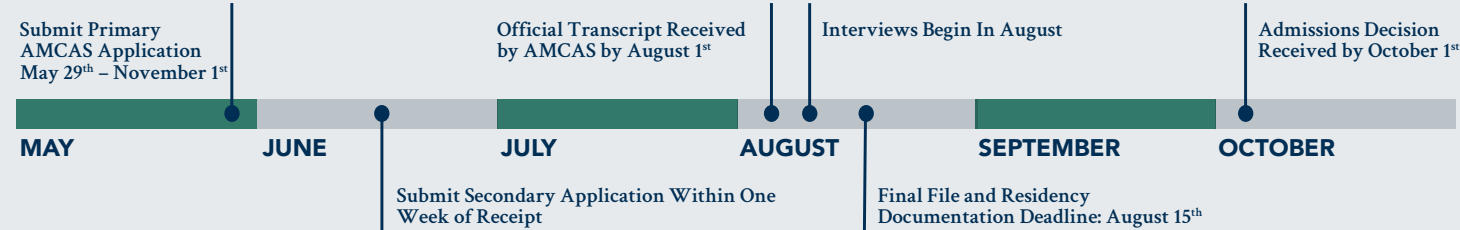
- MCAT score of 509 and above **AND**
- Total GPA of 3.7 and above (*total GPAs between 3.65 and 3.69 will be rounded to 3.7)

Exam Deadlines

Applicants applying for Early Decision must have valid MCAT and CASPer exam scores.

- The last MCAT exam date for Early Decision applicants is: June 29, 2023.
 - The last CASPer exam date for Early Decision applicants is: July 18, 2023.
- CASPer scores must be distributed to MCG by the Early Decision distribution deadline of August 1, 2023.

EARLY DECISION TIMELINE



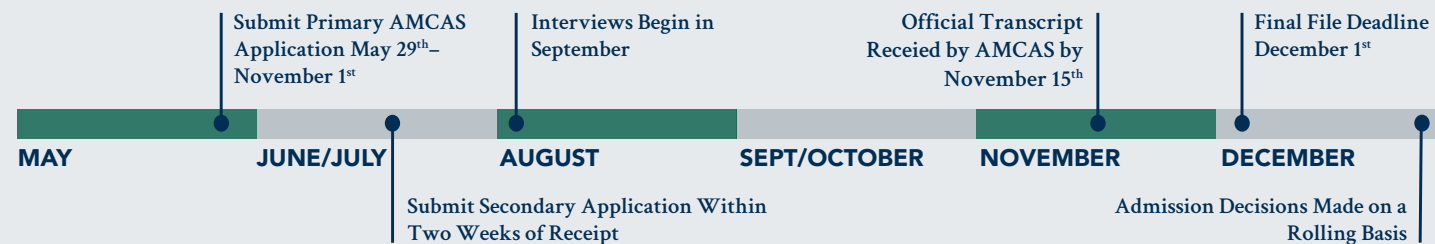
Regular Decision Program

The Regular Decision Program (RDP) at the Medical College of Georgia is open to both Georgia and non-Georgia residents. RDP applicants must submit their AMCAS applications between May 29th and November 1st. Applicants must list the Medical College of Georgia at Augusta University on the AMCAS application by the November 1st deadline and official transcripts, from all U.S. and Canadian postsecondary institutions attended, must be received through AMCAS by November 15th. Transcripts must be submitted to AMCAS directly from the college's/university's registrar's office. All MCG-specific supplemental documents, such as the secondary application, proof of lawful presence in the U.S., Georgia residency documentation, required course information and other specifically requested documents, must be submitted two weeks after the secondary application is received. All required documents must be submitted by the final file deadline of December 1st. Applications received after the final file deadline of December 1st will not be considered for admission.

Exam Deadlines

Applicants applying for Regular Decision must have valid MCAT and CASPer exam scores.

- The last MCAT exam date for Regular Decision applicants is: September 9, 2023.
 - The last CASPer exam date for Regular Decision applicants is: September 28, 2023.
- CASPer scores must be distributed to MCG by the Regular Decision distribution deadline of October 11, 2023.



APPLICATION REQUIREMENTS

Primary & Secondary Applications

MCG participates in the American Medical College Application Service (AMCAS) American Medical College Application Service, a centralized application service administered by the AAMC Association of American Colleges. Applications for the Medical College of Georgia's Class of 2028 officially open through AMCAS on Monday, May 1, 2023, and submission begins on May 29, 2023.

Applications will be processed in the AMCAS office and then forwarded to the medical school(s) of the applicant's choice. Upon receipt of the student's application from AMCAS, MCG will forward an application supplement (secondary application) to the applicants approved for further consideration. MCG does not charge an additional application fee in addition to the AMCAS fee.

Students applying through MCG's Early Decision Program must return their secondary application within one week of receipt. Students applying through the Regular Decision Program must submit their secondary application within two weeks of receipt.

PREREQUISITE COURSES

2023-2024 REQUIREMENTS	RECOMMENDED FOR 2023-2024 CYCLE
BIOLOGY One academic year of General Biology or Zoology with lab (If the student places out of general biology using AP credit and chooses not to take a general biology course in college, the student must fulfill this requirement by taking one academic year of advanced biology courses with 2 semesters of lab. Students must complete the laboratory requirement in college.)	ANATOMY CELL BIOLOGY MOLECULAR BIOLOGY IMMUNOLOGY MICROBIOLOGY GENETICS PHYSIOLOGY
CHEMISTRY One academic year of Chemistry during college. One semester must be Organic Chemistry and one semester must be Biochemistry.	
PHYSICS One academic year of physics with 2 semesters of lab. AP credit may be used to place out of this requirement	
ENGLISH One year of English (English, English based composition, writing, literature, or communication are acceptable; humanities courses may be used to meet one semester of this requirement) *Online course work acceptable from a regionally accredited institution. AP credit may be used to place out of this requirement.	PSYCHOLOGY BEHAVIORAL SCIENCE SOCIAL SCIENCE HUMANITIES
STATISTICS One semester of probability, statistics, biostatistics or equivalent. Statistics, probability, or biostatistics courses that have a STAT or MATH course number will automatically meet this requirement. Other courses that have a different prefix must be approved as equivalent by the undergraduate institution where the course was taken through the Pre-med or Pre-health advisor. If such an advisor is not available, the approval may be granted by any math or science chair at the institution. *Online course work acceptable from a regionally accredited institution. AP credit may be used to place out of this requirement.	
	RESEARCH EXPERIENCE

*One academic year is equal to two semesters, three quarters, or one semester and two quarters.

Important Notes:

- All required courses should be taken on a graduated grading scale (e.g. A, B, C, D, F) when possible. A pass/fail type system should not be used.
- Where permitted above, Advanced Placement (AP) credits may be used if they are accepted by the college/university that the applicant attended, and the credits appear on the official transcript.
- Online credit is acceptable for non-science coursework on the basis that the coursework was completed at a regionally accredited institution, and the coursework appears on the official transcript.
- Students must have completed, or be enrolled in, all prerequisite courses by January of the planned matriculation year. Special permission may be granted on a case-by-case basis by the Office of Admissions to complete the courses in a spring or summer semester, ending no later than July of the planned matriculation year.
- In certain, rare circumstances, the Senior Associate Dean for Admissions may waive a prerequisite on a case-by-case basis for individuals demonstrating exceptional academic performance in the required subject area. In order to be considered, students must submit a written appeal and provide additional, supporting documentation.

COVID-19 ADDENDUM

The Office of Admissions is sensitive to the academic burden placed on applicants attempting to complete graded pre-requisite courses that were converted to online and/or Pass/Fail during the COVID-19 pandemic. Towards this end, all successfully completed pre-requisite courses (including Pass/Fail and online) affected by COVID-19 (Spring, Summer, and Fall semesters 2020 and Spring, Summer, and Fall semesters 2021, and Spring and Summer 2022) will be accepted for credit by the Office of Admissions upon verification with that applicant's institution. This will only apply to those courses in which the applicant was actively enrolled during the COVID-19 pandemic. Pass/Fail and online courses will not be accepted for required Biology and Chemistry coursework outside of this exception.

Letters of Recommendation

Applicants are required to submit all letters of recommendation (LORs) through AMCAS. AMCAS receives letters from users of Virtual Evals, Interfolio, and the U.S. Postal Service. Letter writers can opt to upload letters directly to AMCAS through the AMCAS Letter Writer Application. Instructions can be found at: services.aamc.org/letterwriter. Please see the following AMCAS URL for details on the Letters of Recommendation (LORs) and the letter request forms: students-residents.aamc.org/how-apply-medical-school-amcas/section-6-amcas-application-letters-evaluation.

- Applicants must submit a minimum of 3 letters to be considered for an interview. We recommend a maximum of 5 letters.
- All letters of recommendation must be current and contain either a handwritten signature or appear on official letterhead.
- The three mandatory letters of recommendation should include a letter authored by a Pre-Health committee or a Pre-Health advisor, if available. Applicants who do not have a Pre-Health committee or Pre-Health advisor should submit letters from someone knowledgeable about the applicant's academic capabilities.
- If the applicant has been out of school for several years, he/she may choose to submit a reference letter from an employer.
- It is also strongly recommended, and preferred, that at least one of the personal recommendations come from a physician the applicant has observed and/or worked with in a clinical environment.
- Letters from relatives are not permitted.

Transcripts & Supplemental Records

- Official transcripts from all U.S. and Canadian post-secondary institutions attended must be received through AMCAS by August 1 for Early Decision applicants and November 15 for Regular Decision applicants.
- Transcripts must arrive to AMCAS directly from the college's/university's Registrar's office.
- All student supplemental records (items required in addition to the primary AMCAS application) must be submitted within one week of receipt for the Early Decision program and two weeks of receipt for the Regular Decision Program.
- All required documentation must be submitted to the MCG Office of Admissions by August 15 for Early Decision applicants and December 1 for Regular Decision applicants.

CASPer Exam

Applicants applying for admission to MCG will also be required to complete the CASPer exam, an open-response, situational judgment test that evaluates aspects of your social intelligence and professionalism such as ethics, empathy, problem-solving, and collaboration.

- An invitation to interview will not be extended without a valid CASPer score.
- CASPer test results are only valid for one admissions cycle.
- The last CASPer exam date for Early Decision applicants is July 18, 2023, and the last test date for Regular Decision applicants is September 28, 2023.
- Results generally take two to three weeks to reach the MCG Office of Admissions.
- CASPer scores must be distributed to the Office of Admissions by the stated distribution deadline in order to be considered valid.

More about the taking the CASPer exam:

- Duet is not required for admission.
- There is a fee associated with the CASPer exam that is paid directly to Acuity Insights. Students receiving fee assistance through the AAMC may qualify for a fee waiver.
- To learn more, view exam dates, or register for the exam, you may visit: <https://acuityinsights.app/assessments/>.
- Results from this exam will be used in consideration for admission.

MCAT Exam

The Medical College Admission Test (MCAT) exam is required for admission to MCG.

- Applicants must take the MCAT, preferably in the spring before applying to the Medical College of Georgia.
- All applicants must have taken the MCAT no earlier than January 2021.
- The last MCAT test date for Early Decision Program applicants in the 2023-2024 application cycle is June 29, 2023.
- The last test date for Regular Decision Program applicants in the 2023-2024 application cycle is September 9, 2023.
- Psychology and/or Social Science courses are recommended for students preparing to take the MCAT.
- MCAT registration packets can be requested by visiting: aamc.org.

Interviews

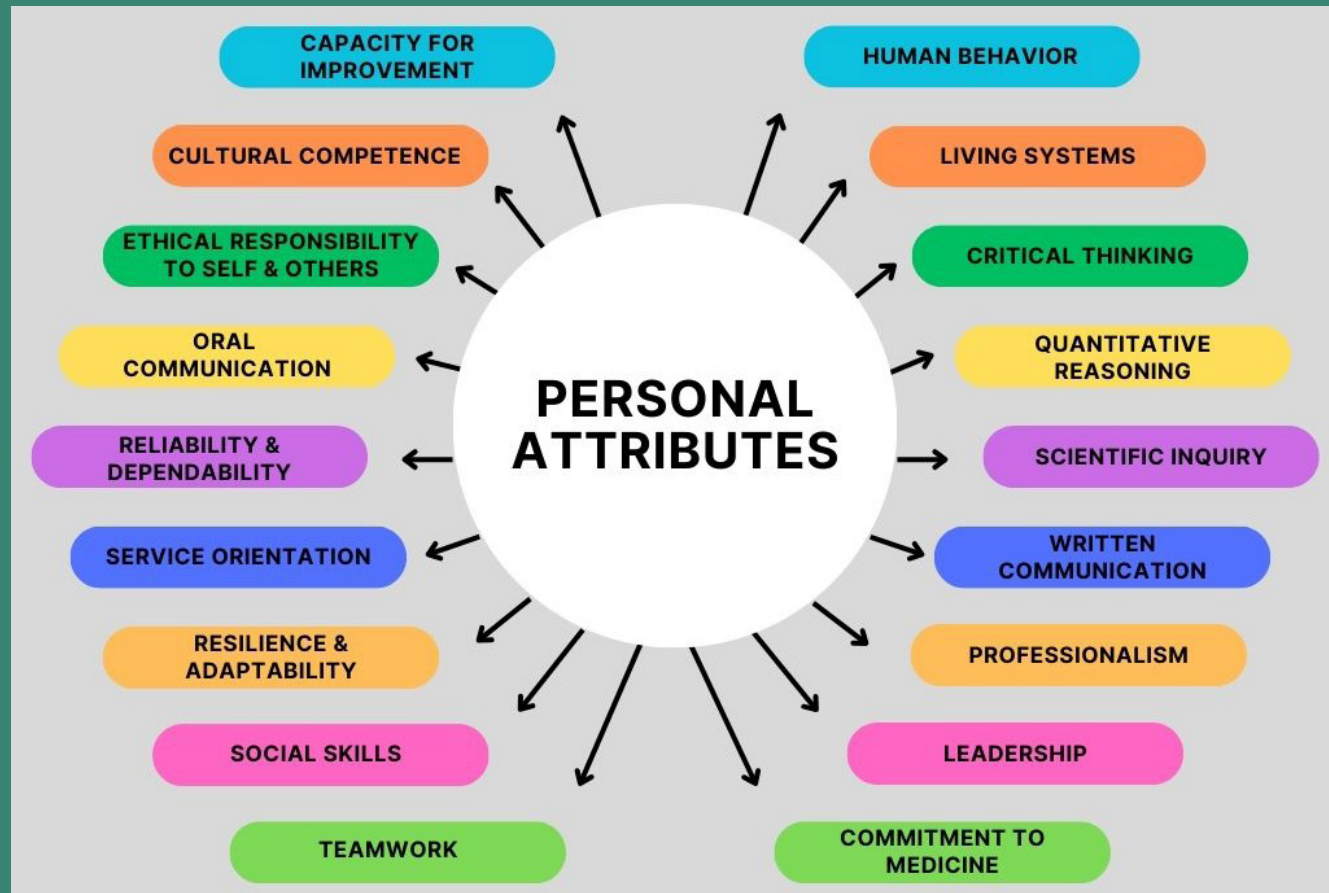
Students invited to interview can expect to participate in a Multiple Mini-Interview (MMI) process, which allows for a consistent evaluation of all candidates.

- The MMI is a series of eight interviews, eight minutes in length, designed to measure an applicant's verbal and non-verbal skills, maturity, critical thinking capabilities, and readiness to enter medicine.
- Interviews are by invitation only.
- Given the highly competitive nature of the applicant pool, applicants with GPAs less than 3.0 or an MCAT score of less than 496, are not considered competitive for interview.
- For additional information on what it is like to participate in MMIs, please visit the AAMC's reference page at: students-residents.aamc.org/applying-medical-school/article/what-its-participate-multiple-mini-interviews-mmis.

Admission Guidelines

The Admissions Committee conducts a holistic review of qualified applicants and strives to accept applicants who will help meet the health care needs of a widely dispersed and highly diverse Georgia population. Applicants should have academic ability, personal attributes and interests consistent with the Medical College of Georgia's mission of improving health and reducing the burden of illness on society. Information used to assess academic accomplishments, experiences, personal attributes and interests includes but is not limited to the applicant's:

- Responsibilities prior to application to medical school (e.g., work, providing financial support for family)
- Clinical Exposure (examples include but are not limited to: EMT, CAN, MA, scribe, volunteering in a clinical setting, shadowing...)
- Extracurricular and community activities
- Leadership
- Resilience
- Research experience
- Socioeconomic and cultural background (e.g., income, education level of family members)
- Region of residence with respect to its health professional needs
- Commitment to practice in an underserved area of Georgia or underserved populations of Georgia
- Letters of recommendation
- Motivation and potential for serving as a physician
- Multiple mini-interview reports
- Performance on the Medical College Admission Test (MCAT) and CASPer exam, college grades including undergraduate, graduate and post-baccalaureate



Technical Standards

Certain technical standards for physicians and medical students which must be met by all applicants and students consist of the minimum physical, cognitive, emotional, interpersonal, and communication requirements to provide reasonable assurance of completion of the entire course of study and degree requirements. Because the M.D. degree signifies that the holder is a physician prepared for entry into the practice of medicine within postgraduate training programs, it follows that graduates must have the knowledge and skills needed in a broad variety of clinical situations and to render a wide spectrum of patient care. Applicants are selected for admission based not only on their scholastic ability, but also on their intellectual, physical, and emotional capacities to meet the requirements of the curriculum and a successful career in medicine.

Candidates for the M.D. degree must possess aptitude, abilities, and skills in observation; communication; motor function and coordination; intellectual abilities involving conceptualization, integration, and quantitation; and behavioral and social skills, abilities, and aptitude. Students must personally demonstrate these technical standards in order to fulfill the essential course requirements of general medical education as well as eventual practice. These technical standards are prerequisites for entrance, continuation, promotion, retention, and graduation from medical school. Reasonable accommodation is available to assist with a variety of disabilities and may be permitted for disabilities in certain areas. Under all circumstances, a candidate should be able to perform in a reasonably independent manner. Therefore, third parties cannot be used to assist students in accomplishing curricular requirements in these five areas:

- Observation
- Communication
- Motor Function and Coordination
- Intellectual Abilities including Conceptualization, Integration and Quantitation
- Behavioral and Social Attributes

Graduates of the Medical College of Georgia at Augusta University must function in a broad variety of clinical situations and render a wide spectrum of patient care. These standards are guidelines and are subject to revision.

Campus Assignment

Out of the 304 seats in the entering class of 2024, 204 students will be assigned to the MCG campus in Augusta, 60 students will be assigned to the AU/UGA Medical Partnership campus in Athens, and 40 students will be assigned to the Southeast campus in Savannah. Campus assignment is based upon an accepted applicant's designated campus preference and space availability. Accepted applicants will be provided with a campus preference form as part of the acceptance packet. Alternate list students will receive a campus preference form as part of the alternate list notification. All students are notified of their campus assignment prior to matriculation, with the majority of campus assignments being made in mid-April. While student preference is strongly considered, there is no guarantee any applicant will be assigned to his/her/their preferred campus. Campus preference does not affect admission decisions and alternate list students must be willing to accept a position on any campus.

MCG's Acceptance & Withdrawal Procedures

It is expected that all accepted applicants be aware of, and participate in, the AMCAS "Choose Your Medical School" tool to communicate enrollment intentions. Doing so helps prevent unfilled positions in the entering class. Each institution has its own deadlines and requirements for when applicants must commit to enroll through AMCAS. Failure to adhere to these deadlines may result in an administrative withdrawal of an applicant's acceptance:

February 19-April 30, 2024

Accepted applicants may select the "Plan to Enroll" option in AMCAS via the "Choose Your Medical School" tool. Accepted applicants should also sign their MCG acceptance agreement and upload it to the online application portal within the stated admission deadlines.

April 15 - April 30, 2024

Accepted applicants with multiple admission offers should narrow their choices to three medical schools, with no limit on the number of alternate list offers they may hold.

May 1-July 5, 2024

Accepted applicants may select the "Commit to Enroll" option in AMCAS via the "Choose Your Medical School" tool. This signals that an applicant is committing to MCG and withdrawing applications from other medical schools. Selecting "Commit to Enroll" does not automatically withdraw acceptances from other medical schools.

May 1, 2024

Beginning May 2, 2024, if MCG receives notification from AMCAS that an applicant has committed to enroll at another institution, we will withdraw that applicant from the 2022 entering class.

June 1, 2024

Before June 1, 2024, students accepted from the alternate list will have five business days to affirm their acceptance to MCG and withdraw their acceptance from other medical schools. Students accepted after June 1, must affirm their acceptance and withdraw from other medical schools within 48 hours.

Final Deadline

All accepted students are required to "Commit to Enroll" by July 5. Those participating in the pre-matriculation program must commit by May 16. If not, MCG may withdraw you from the 2024 entering class.

POLICIES

Criminal Background Check

The Association of American Medical Colleges recommends that all US medical schools obtain a national background check on applicants upon their initial conditional acceptance to medical school to bolster the public's continuing trust in the medical profession, enhance the safety and wellbeing of patients, ascertain the ability of accepted applicants and enrolled medical students to eventually become licensed as physicians, and to minimize the liability of medical schools and their affiliated clinical facilities. Students attending the AU/UGA Medical Partnership campus may be asked to complete an additional background check.

Student Health Insurance

AU students must carry comprehensive health protection meeting the minimum benefit standards listed below.

Plan must be ACA compliant, meaning that the plan is an individual or group insurance plan meeting the requirements of ACA:

- I. A. Unlimited Maximum Benefit for covered medical expenses.
- II. B. Coverage for essential benefits (with no dollar limits), as defined under the ACA. This includes, but is not limited to:
 - a. Pharmacy
 - b. Mental health services on parity with medical services
 - c. Maternity benefits
 - d. Preventive care with no cost-sharing for Preferred Providers
 - e. Coverage for pre-existing condition with no waiting period
 - f. Pediatric dental and vision coverage
- III. Maximum preferred provider total out-of-pocket expenses cannot exceed \$8,150 per member (\$16,300 per family).
- IV. For students in J status waiver eligible coverage meeting USG and U.S. Department State regulatory minimum requirements must be submitted at the time of the immigration check-in appointment. J visa holders must have the following minimum benefits:
 - a. Deductible of no more than \$500 per accident or illness.
 - b. Medical Benefits of at least \$100,000 per accident or illness.
 - c. Expenses associated with the medical evacuation to his or home country in the amount of \$50,000
 - d. Repatriation of remains in the amount of \$25,000. (Can be purchased separately)
 - e. A policy underwritten by an insurance carrier with:
 - a. an A.M. Best rating of "A-" or above
 - b. a McGraw Hill Financial/Standard & Poor's Claims Paying Ability rating of "A-" or above
 - c. Fitch Rating, Inc. rating of "A-" or above
 - e. a Weiss Research, Inc. rating of "B +" or aboveBridge, Gap, Monthly, TriTerm, STM (Short Term Medical), limit/Indemnity plans will not be accepted.

Immunization Policy

The minimum immunization requirements for all University System of Georgia colleges and universities are established by the Georgia Board of Regents. Specific institutions, with the concurrence of their Presidents and the Chancellor, may require some immunizations not required for all new students by this policy. Institutions are also authorized to impose additional immunization requirements for students when, in the opinion of the President of the institution and with the concurrence of

the Chancellor and appropriate public health authorities, there is a substantial risk of exposure to other communicable diseases preventable by vaccination (BOR Minutes, 1990-91, p.114).

All entering Augusta University students are required to provide AU with documentation of the minimum immunization requirements set forth by the Board of Regents. Those students enrolled in a college on the Health Sciences Campus are required to provide additional documentation/ proof of immunity to AU per the requirements of the college of enrollment.

All students living in any AU Residence Hall (University Village or health sciences housing units) must provide proof of immunization for the meningococcal virus that causes meningitis.

Immunization Exceptions: In cases in which compliance with this policy prior to the start of classes is not feasible for the enrolled student, Student Health may grant an extension for the student to comply. The following list includes the only exceptions to compliance with this policy. Any exceptions must be granted jointly by the student's college of enrollment and the Registrar's Office.

1. If the student has a medical condition that prohibits compliance with this policy.
2. If the student is in the process of completing a specific vaccination series, the student is expected to follow the required time frames of completion associated with each requirement within the series.
3. A religious waiver can be granted with a statement of affirmation that the immunizations required by the BOR/ AU are in conflict with students' religious beliefs. Students on the Health Sciences Campus will not be granted a religious waiver if the curriculum involves physical presence at a clinical site.
4. A student who is enrolled in a distance learning program based on the requirements of the college of enrollment.

HIV, HBV, HCV Policy

This policy only applies to Augusta University Health Sciences students during their enrollment in Health Science Programs (e.g. Allied Health, Dentistry, Biomedical Graduate Studies, Medicine or Nursing). It provides a method to manage students who are, or become infected with a bloodborne pathogen including Human Immunodeficiency Virus (HIV), hepatitis B (HBV), and hepatitis C (HCV). It describes evidence-based procedures for managing infected students in a way that protects their privacy while providing reasonable precautions to create a safe environment in the academic health care setting. Any Medical College of Georgia student who knows or has reason to believe that he/she has a blood-pathogen is required to report this information immediately to the Office of Student Health. Failure on the part of a student to report a known blood-borne pathogen may result in disciplinary action, up to and including dismissal. Student Health Services augusta.edu/shs Immunizations augusta.edu/shs/immunizations.

Deferment

Accepted students seeking deferment will be considered on a case-by-case basis. One-year deferments are only available to candidates on the alternate list after an offer of admission has been made and only in cases of extreme personal hardship.

A deferment requires extenuating, unexpected personal circumstances. To be considered, the student must write a letter to the Associate Dean for Admissions explaining the reasons for deferment. Each case will be presented to and voted on by the Admissions Committee. Only one request for a one-year deferment will be considered. Deferment requests should not be made to delay a decision on which medical school to attend.

The Medical College of Georgia cannot hold scholarship offers made in the initial year of acceptance for the following year. A deferred student is eligible for scholarship offers in the following year with no guarantee. A deferred student's campus assignment will not be guaranteed for the following year.

Transfer & Transfer with Advanced Standing

The Medical College of Georgia at Augusta University recognizes extenuating circumstances and will consider requests for transfer or transfer with advanced standing from students enrolled and in good standing at an LCME-accredited medical school on a case-by-case basis in situations of personal hardship or other compelling circumstances.

The Medical College of Georgia will consider requests for transfer into phase two of the pre-clerkship curriculum or transfer with advanced standing into the beginning of the clinical curriculum on a case-by-case basis, contingent on class space availability. Acceptance decisions will be made at the discretion of the MCG admissions subcommittee with input as appropriate from the Curriculum Office, the Office of Student Affairs, and the Vice Dean for Academic Affairs. Transfer students are considered with the same rigor by the subcommittee as those applying for entry into the first year. All decisions by the admissions subcommittee are final and cannot be appealed. Acceptance will be contingent upon stipulations outlined by the subcommittee. Given MCG's accelerated pre-clerkship curriculum, transfer acceptance is primarily considered for students entering the beginning of the clinical years (advanced standing). Transfer into phase two of the pre-clerkship curriculum is considered on a case-by-case basis and academic comparability of completed curriculum components must be reviewed and approved by MCG's Office of Academic Affairs. Any student accepted for transfer or transfer with advanced standing must be willing to be placed on a regional clinical campus and campus preference cannot be guaranteed.

Readmission Policy

The Medical College of Georgia at Augusta University will consider requests for readmission into medical school for students who voluntarily withdrew from MCG in good academic standing less than two calendar years from the time of withdrawal. Students who were dismissed from the medical school program or had professionalism concerns outlined by the MCG Promotions Committee are not eligible for readmission.

Readmission decisions will be made at the discretion of the MCG Ad Hoc Readmission Committee. All decisions of the Ad Hoc Readmission committee will be final and cannot be appealed. Readmission will be contingent upon stipulations outlined by the Ad Hoc committee.

International Applicants

In order to be offered an interview, you must be either a U.S. citizen or a permanent resident of the U.S. with a valid, Permanent Resident Card. International applicants, as well as U.S. citizens, must have completed at least the last two years of their undergraduate or graduate education in a regionally accredited* U.S. or Canadian institution.

All non-U.S. coursework must be evaluated by Josef A. Silny & Associates or World Education Services (WES), companies that offer foreign credential evaluation and translation. You should have a university and post-secondary course-by-course evaluation completed and sent directly from the Silny or WES office to the MCG Office of Admissions for review. For more information, including cost and evaluation timeline, please visit jsilny.org or wes.org.

**Accredited by the appropriate regional agency for colleges and schools, i.e., the equivalent of the Southern Association of Colleges and Schools. Check out the Council for Higher Education Accreditation for more information.*



FINANCIAL INFORMATION

Financial Aid

The Office of Student Financial Aid assists students in financing their education primarily through student loans. AU scholarships for medical students are awarded by the MCG Scholarship Committee, who meets at various times throughout the year. Applications are not required as students are selected based on defined criteria, and all who meet the criteria are considered.

Students should apply for financial aid by completing a Free Application for Federal Student Aid application at fafsa.ed.gov as soon as possible after October 1 of each year. Applications will be processed when the student's file is complete.

Financial Aid Counseling Requirement

Financial literacy is an important component of your medical school journey. A new requirement that began with the Class of 2027 is that all incoming medical students are required to complete an individual financial aid counseling session prior to matriculation at the Medical College of Georgia. This is an opportunity to better understand the financial aid process, including costs, and differences in loan types, and to review your specific student profile to ensure knowledge of financial aid options and financial literacy.

Refund Policy

Students who withdraw from all courses before completing 60 percent of the semester are entitled to a refund of a portion of tuition, mandatory fees and institutional charges. The refund amount for students withdrawing from an institution shall be based on a pro rata percentage determined by dividing the number of calendar days in the semester that the student completed by the total calendar days in the semester. The total calendar days in a semester includes weekends, but excludes scheduled breaks of five (5) or more days and days that a student was on an approved leave of absence. The total number of calendar days in the semester includes weekends and exam periods. Calculations exclude scheduled breaks of five or more calendar days and days that a student was on approved leave of absence defined by federal regulations of the return of Title IV student aid funds. Students who drop individual courses are not entitled to a refund for the course(s) dropped; only students who withdraw from the institution in keeping with official withdrawal procedures established by the Office of the Registrar are eligible for refunds.

Institutional charges include tuition, activity fee, student health fee, on-campus housing, Campus Recreation Center fee, technology fee, microscope rental and any other equipment rental fee paid directly to the school. Parking fees, health insurance, disability insurance, fines, library charges, books, supplies, dues, liability insurance and any fee paid directly to a vendor on behalf of the student are not institutional charges and not included in refund calculations. Phase III of the Medical College of Georgia curriculum is defined by federal aid regulations as a modular curriculum. An individual clinical rotation, regardless of length, is a module. Students enrolled in modular curriculum who complete one or more modules during a semester are not entitled to a refund. In addition, students completing 60 percent or more of the total educational activities for the modules for which the student was registered at the beginning of the semester will not receive a refund. A refund of all non-resident fees, matriculation fees and other mandatory fees is payable in the event of a death of a student at any time during the semester. Full refunds of tuition and mandatory fees and pro rata refunds of electives fees will go to students who are:

- Military reservists (including members of the National Guard) who receive emergency orders to active duty after enrollment.
- Active-duty military personnel who receive an emergency reassignment after enrollment.
- Otherwise unusually and detrimentally affected by the emergency activation of members of the reserve components or the emergency deployment of active-duty personnel who demonstrate a need for exceptional equitable relief.

Refunds to students receiving student financial aid will be coordinated with the Return of Title IV Funds regulations of the Higher Education Act of 1965 as amended, state scholarships and grant regulations, and the regulations of the individual private scholarships and loans, as appropriate.

Payments for tuition and fees may be made on POUNCE with an electronic check or credit card. Credit cards are accepted by a third party and will incur a cost of 2.85% of the balance with a \$3.00 minimum charge. The convenience fee is nonrefundable. You may pay in person by cash, check or money order at the Payne Hall Business Office on the Summerville Campus. You can learn about additional payment options by contacting the Business Office at 706-737-1767 or at their website augusta.edu/finance/controller/businessoffice/paymentoptionsrefunds.

A complete description of Augusta University's Refund Policies can be found at augusta.edu/finance/controller/businessoffice/paymentoptionsrefunds

fafsa.ed.gov

**Office of Student Financial Aid
Health Sciences Campus
Student Center
706-737-1883**

**Business Office
Summerville Campus
Payne Hall
706-737-1767**

2023-2024 TUITION AND FEES*

AUGUSTA & SAVANNAH CAMPUS

TUITION PER SEMESTER

Doctor of Medicine (MAIN CAMPUS)

Description	Rate
In-State, 12 or more hours	\$14,463.00
In-State, 1-11 hours	\$ 1,206.00 per hour
Out-of-State, 12 or more hours	\$28,925.00
Out-of-State, 1-11 hours	\$ 2,411.00 per hour

FALL & SPRING MANDATORY FEES, PER SEMESTER

Mandatory fees are charged to each student per semester.

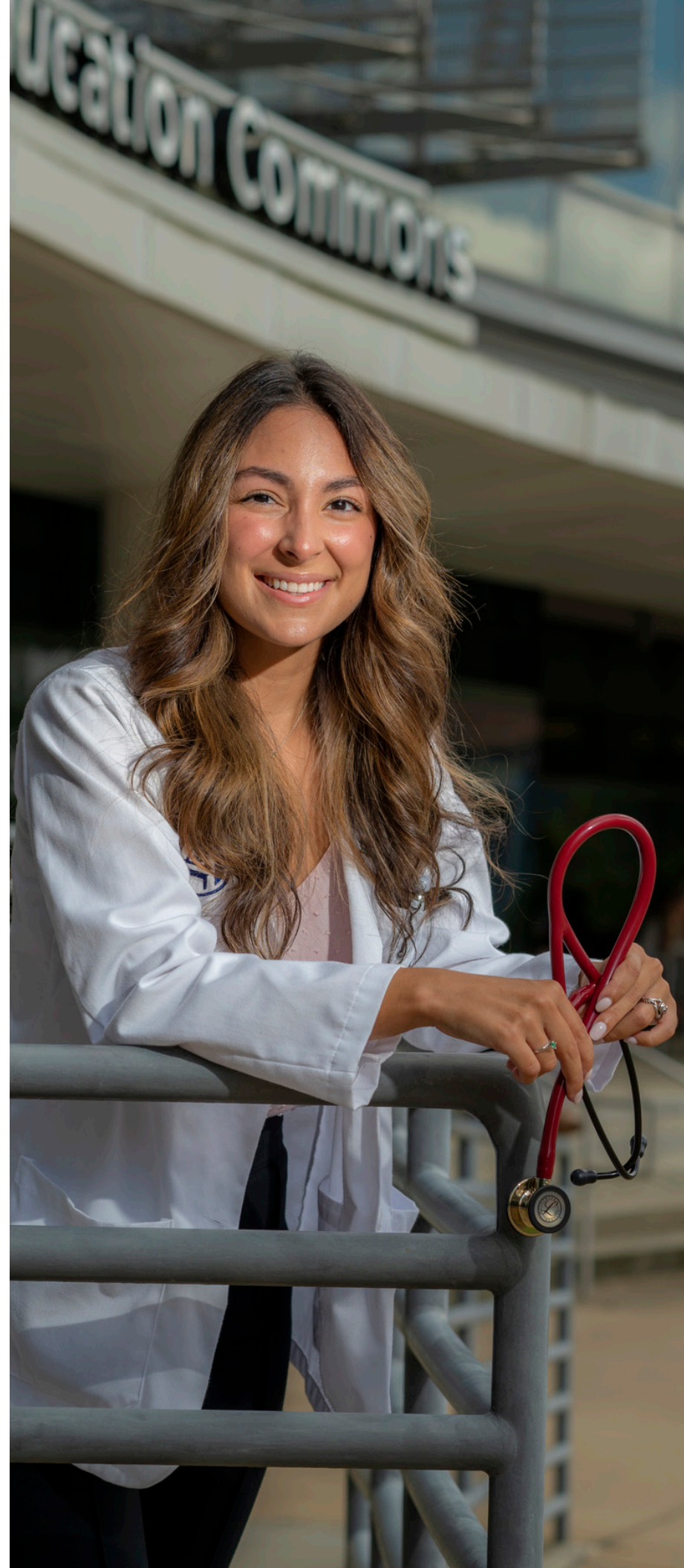
Description	Rate
Activity Fee	\$ 70.50
Athletic Fee	\$ 262.50
Health Fee	\$ 210.00
Special Institutional Fee	\$ 450.00
Student Center/Facility Fee	\$ 64.50
Technology Fee	\$ 165.00
Transportation Fee	\$ 75.00
Wellness Fee	\$ 75.00
Total	\$ 1,372.50

SPECIAL FEES

Special fees may be assessed for elective items, such as parking, or for program or course specific fees, such as those related to labs.

Description	Rate
Athletic Insurance Rider (Summer only)	\$ 400.00
Medicine Disability Insurance	\$ 93.00
Medicine Liability Insurance	\$ 38.68
Needlestick and Exposure Insurance	\$ 48.00
Student Health Insurance (Fall)	\$ 1,143.00
Student Health Insurance (Spring/Summer)	\$ 1,581.00
Student Health Insurance (Summer only)	\$ 697.00

*As of July 2021 and are subject to change



2023-2024 TUITION AND FEES*

AU/UGA MEDICAL PARTNERSHIP CAMPUS

TUITION PER SEMESTER

Doctor of Medicine (ATHENS CAMPUS)

Description	Rate
In-State, 12 or more hours	\$14,463.00
In-State, 1-11 hours	\$ 1,206.00 per hour
Out-of-State, 12 or more hours	\$28,925.00
Out-of-State, 1-11 hours	\$ 2,411.00 per hour

FALL & SPRING MANDATORY FEES, PER SEMESTER

Mandatory fees are charged to each student per semester.

Description	Rate
Activity Fee	\$ 117.00
Athletic Fee	\$ 79.50
Connect UGA Fee	\$ 45.00
Green Fee	\$ 4.50
Health Fee	\$ 309.00
Special Institutional Fee	\$ 450.00
Student Center/Facility Fee	\$ 112.50
Technology Fee	\$ 171.00
Transportation Fee	\$ 181.50
Total	\$ 1,492.50

SPECIAL FEES

Special fees may be assessed for elective items, such as parking, or for program or course specific fees, such as those related to labs.

Description	Rate
Anatomy Lab Fee	\$ 400.00
Immunization Tracking Fee	\$ 25.00
Medicine Disability Insurance	\$ 93.00
Medicine Liability Insurance	\$ 37.00
Needlestick and Exposure Insurance	\$ 41.00
Student Health Insurance (Fall)	\$ TBD
Student Health Insurance (Spring/Summer)	\$ TBD
Student Health Insurance (Summer only)	\$ TBD
Student Health Insurance Athlete Rider (Fall)	\$ TBD
Student Health Insurance Athlete Rider (Spring/Summer)	\$ TBD
Student Health Insurance Athlete Rider (Summer Only)	\$ TBD

*Additional and special fees will be considered in the Cost of Attendance (COA).

*All tuition and fees are due and payable upon registration and subject to change without notice.

CONTACT US

Office of Admissions

Medical College of Georgia BC-1100
Augusta University
Augusta, GA 30912-4760
Phone: 706-721-3186
Fax: 706-721-0959
Email: mcgadmissions@augusta.edu
augusta.edu/mcg/admissions

[Instagram.com/mcg_aug](https://www.instagram.com/mcg_aug)
[facebook.com/MCG.AUG](https://www.facebook.com/MCG.AUG)
twitter.com/MCG_AUG

Kelli Braun, MD, Senior Associate Dean for Admissions
Scott Barman, PhD, Assistant Dean for Admissions
Macy Rice, MPA, Director of Admissions and Recruitment Operations
Lacey White, BS, Senior Admissions Counselor
Christina Shorter, BA, Admissions Counselor
Matarsha Kendrick, BIS, Admissions Counselor
Genna Salvador, MA, Office Coordinator

Augusta University is an Affirmative Action/ Equal Opportunity Educational Institution. No person shall, on the grounds of age, disability, gender, national origin, race, religion, sexual orientation or status as a Vietnam Era Veteran, be excluded from participation in, or be otherwise subjected to discrimination in any educational program, activity or facility.





AUGUSTA UNIVERSITY

**MEDICAL COLLEGE
OF GEORGIA**

Contact Us

Office of Admissions

Medical College of Georgia at Augusta University

Augusta, Georgia 30912-4760

Phone: 706-721-3186

Fax: 706-721-0959

augusta.edu/mcg/admissions



facebook.com/mcg.aug



twitter.com/mcg_aug



instagram.com/mcg_addmissions